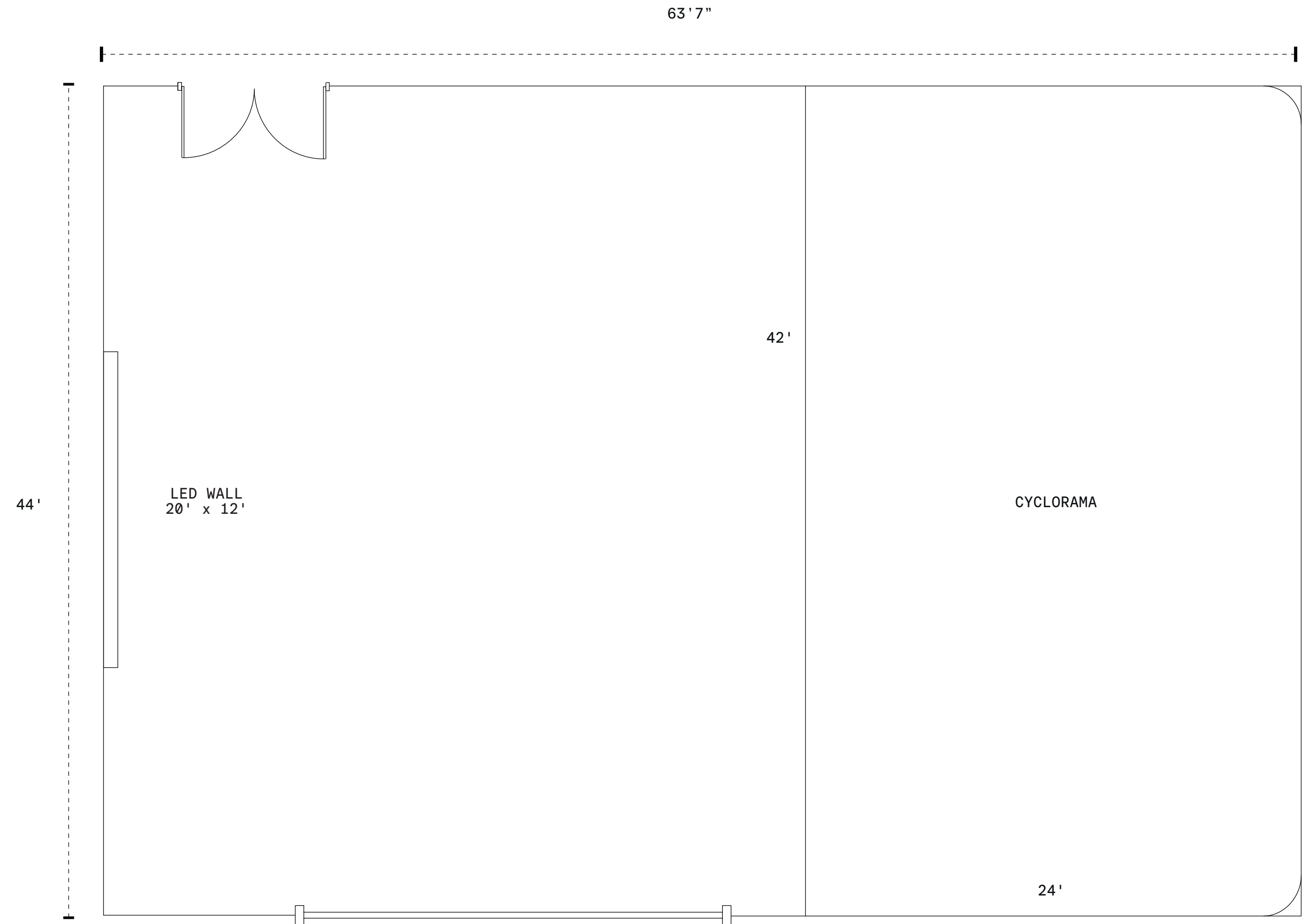


STAGE 2



SIZE / TYPE

2800sf. / Semi-Daylight Studio



SPECS

Dimensions: 44'W x 63'7"D x 16'H to Beams / 19'-31' Slope of Ceiling
Cyclorama: 3 Wall, 2 Corner, 42'W x 24'D x 16'H to Beams
North Facing Window: One, 17'9"W x 11'H / Blackout Capable

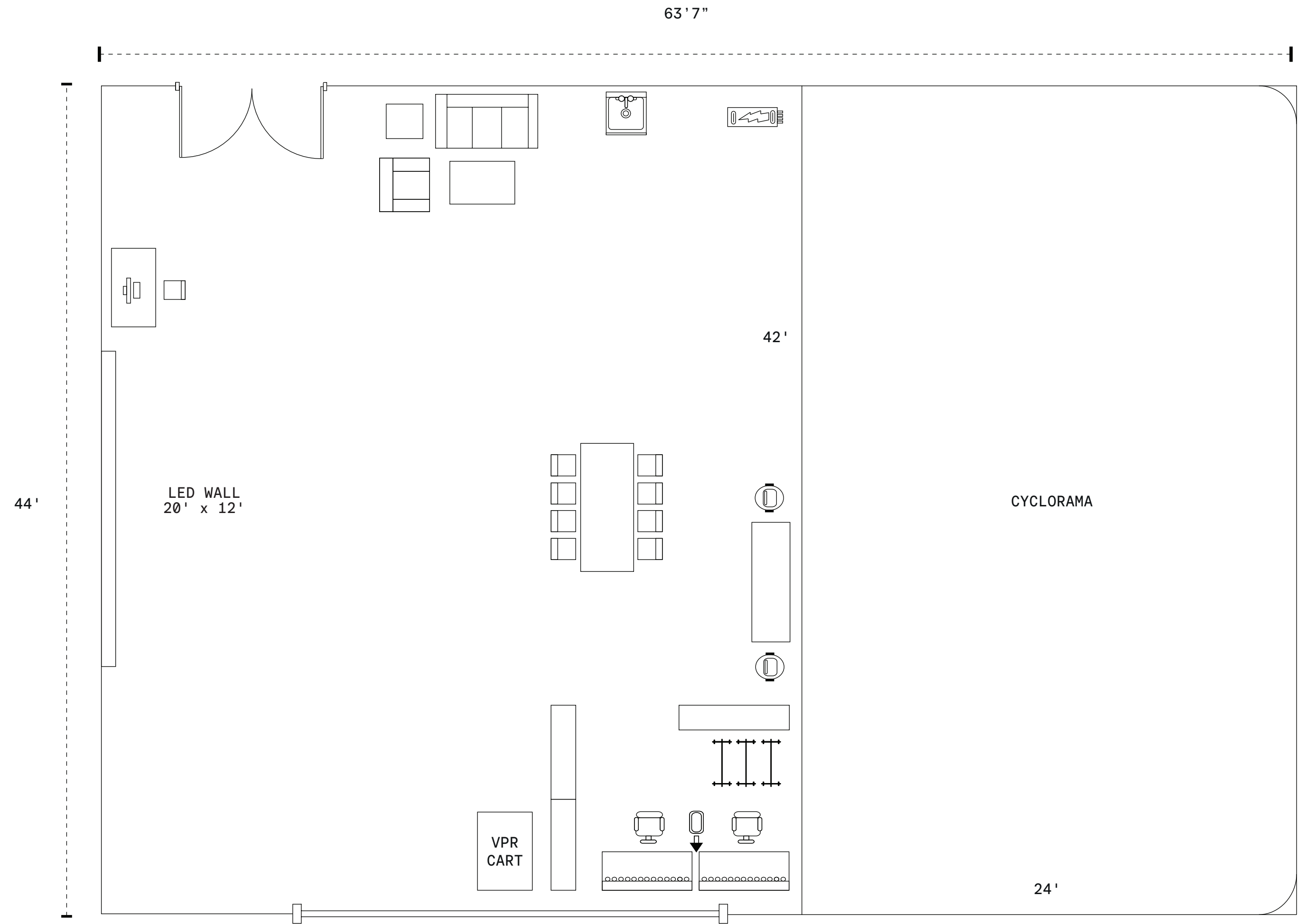
Power: 200 Amp 3 Phase Distributed by Camlock Service

STAGE 2



SIZE / TYPE

2800sf. / Semi-Daylight Studio



SPECS

Dimensions: 44'W x 63'7"D x 16'H to Beams / 19'-31' Slope of Ceiling
Cyclorama: 3 Wall, 2 Corner, 42'W x 24'D x 16'H to Beams
North Facing Window: One, 17'9"W x 11'H / Blackout Capable

Power: 200 Amp 3 Phase Distributed by Camlock Service