

STUDIO 4



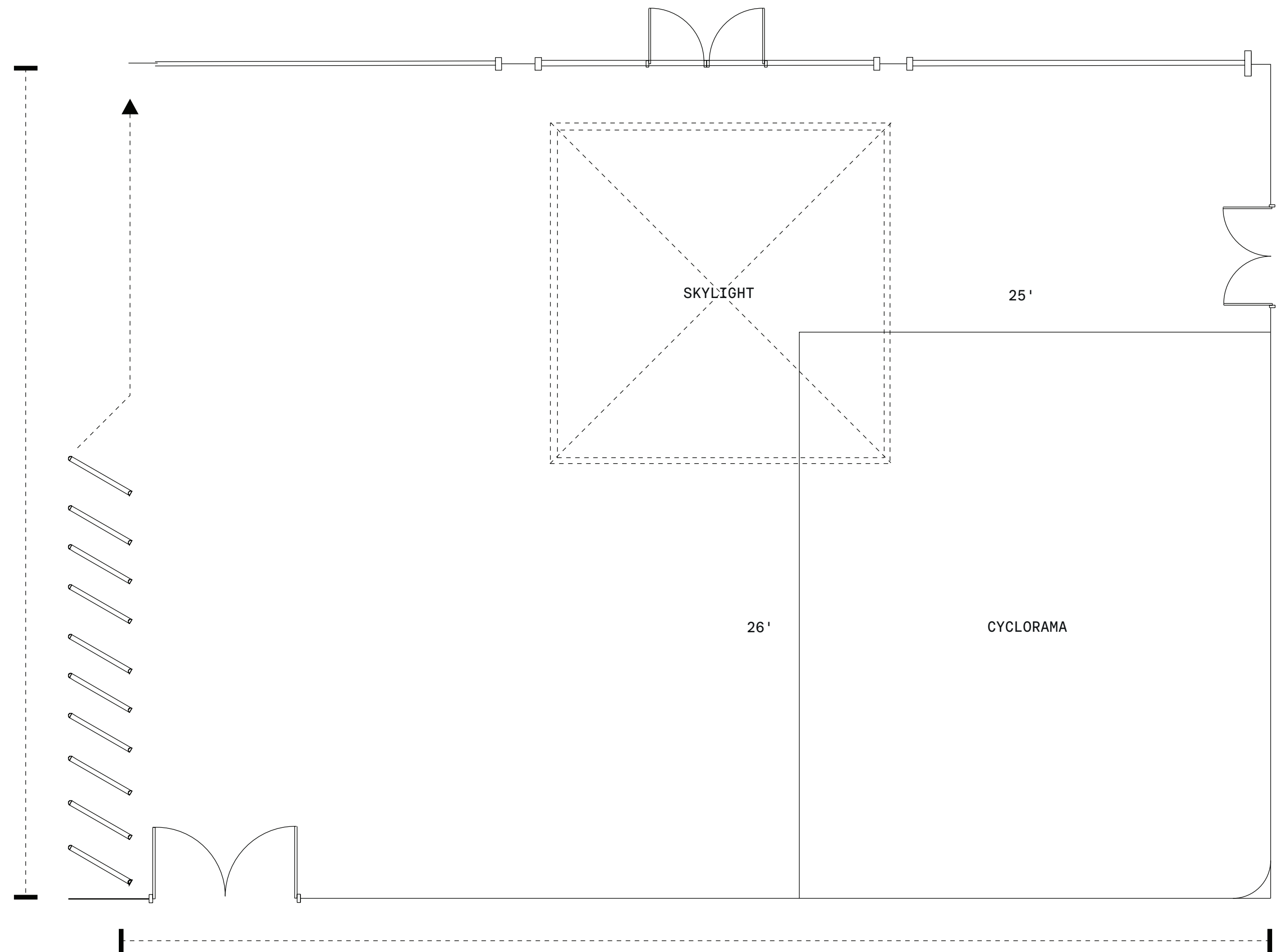
SIZE / TYPE

2900sf. / South Daylight Studio



OPENS TO
STUDIO 5

46'



SPECS

Dimensions: 46'W x 63'D x 16'H to Beams / 19'-31' Slope of Ceiling
 Cyclorama: 2 Wall, 1 Corner, 26'W x 25'D x 16'H to Beams
 South Facing Windows: Wall of Three, 17'10"W x 11'H / Blackout Capable
 Skylight: One, 15'W x 18'D / Blackout Capable

Doors Leading to Sun Deck: 5'8"W x 6'11"H
 Retractable Wall to Studio 5: 46'W x 13'10"H
 Power: 200 Amp 3 Phase Distributed by Camlock Service

STUDIO 4



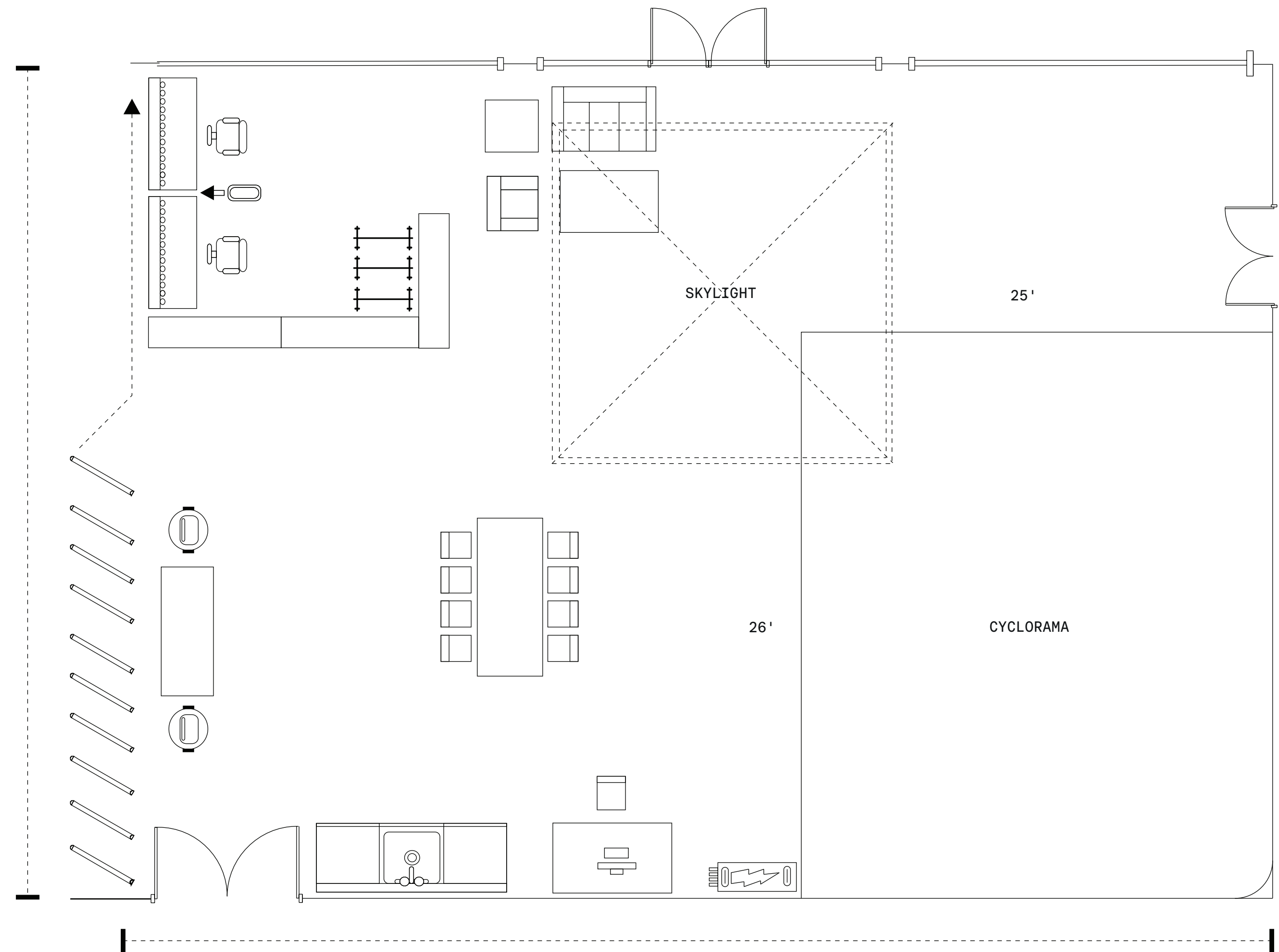
SIZE / TYPE

2900sf. / South Daylight Studio



OPENS TO
STUDIO 5

46'



SPECS

Dimensions: 46'W x 63'D x 16'H to Beams / 19'-31' Slope of Ceiling
 Cyclorama: 2 Wall, 1 Corner, 26'W x 25'D x 16'H to Beams
 South Facing Windows: Wall of Three, 17'10"W x 11'H / Blackout Capable
 Skylight: One, 15'W x 18'D / Blackout Capable

Doors Leading to Sun Deck: 5'8"W x 6'11"H
 Retractable Wall to Studio 5: 46'W x 13'10"H
 Power: 200 Amp 3 Phase Distributed by Camlock Service