

# STUDIO 7



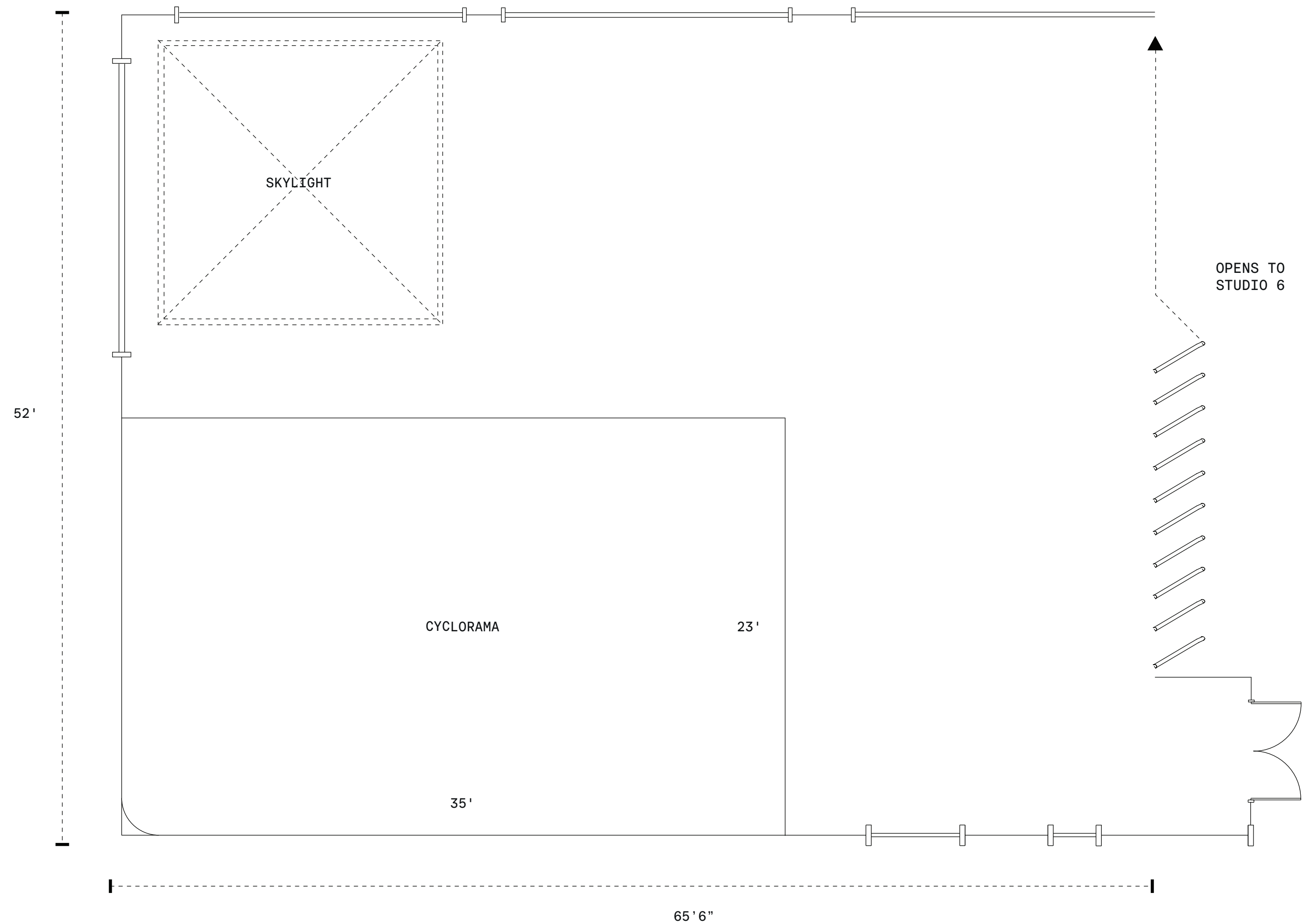
SIZE / TYPE

3400sf. / Southwest Daylight Studio



SPECS

Dimensions: 65'6"W x 52'D x 11'6"H to Beams / 15'-18' Slope of Ceiling  
Cyclorama: 2 Wall, 1 Scoop, 35'W x 23'D x 11'H  
West Facing Windows: Wall of Three, 17'10"W x 9'H  
South Facing Window: One, 17'10"W x 8'H / Blackout Capable



Skylight: One, 18'W x 15'D / Blackout Capable  
Retractable Wall to Studio 6: 42'W x 10'8"H  
Power: 200 Amp 3 Phase Distributed by Camlock Service

# STUDIO 7

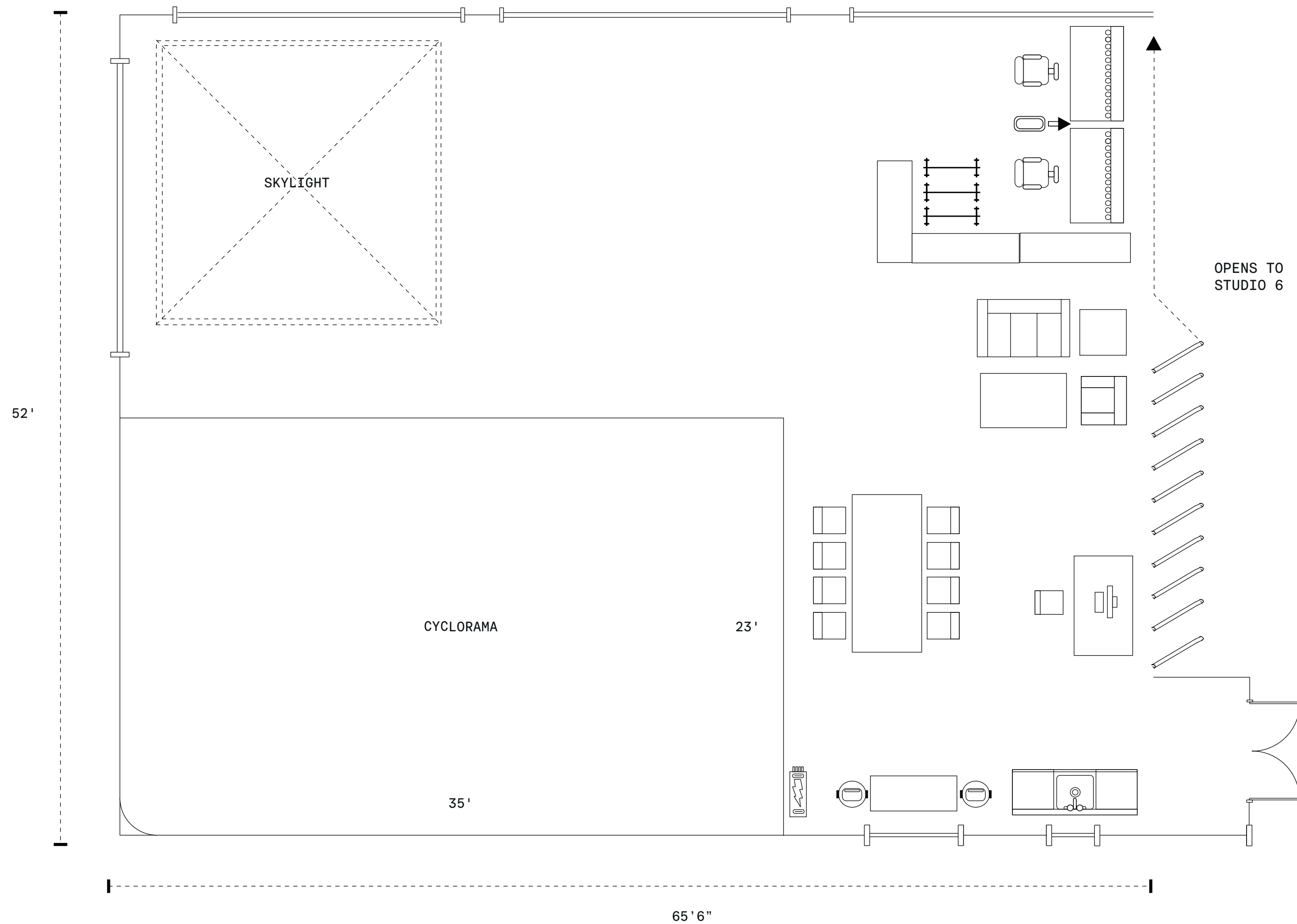


SIZE / TYPE

3400sf. / Southwest Daylight Studio



SPECS



Dimensions: 65'6"W x 52'D x 11'6"H to Beams / 15'-18' Slope of Ceiling  
 Cyclorama: 2 Wall, 1 Scoop, 35'W x 23'D x 11'H  
 West Facing Windows: Wall of Three, 17'10"W x 9'H  
 South Facing Window: One, 17'10"W x 8'H / Blackout Capable

Skylight: One, 18'W x 15'D / Blackout Capable  
 Retractable Wall to Studio 6: 42'W x 10'8"H  
 Power: 200 Amp 3 Phase Distributed by Camlock Service