



# Specifications + Floor Plans

## FAQ + Terms

### Options

Pier59 Studios allocates “first” and “second” options based on our availabilities. Clients allotted a first option have the first right of refusal to the space and can confirm at will. If there is a pre-existing first option on the dates requested, a second option will be issued. If a first option hold releases, the first will be reallocated to a client holding a successive second option.

### Challenges

In the event a client holding second option would like to confirm and contract a space prior to a first option becoming available, they may place a challenge in effort to do so. Once challenged, the client holding first option has 24 business hours to either confirm the studio or release their hold to the challenger. If the challenged space is released, the challenger is immediately confirmed and contracted in the studio space. Placing a challenge is considered a binding agreement, and cancellation fees are applicable if the challenger does not wish to proceed with the booking at any time following the challenge's placement assuming the challenge is won.

### Cancellations

Cancellation fees are applicable to a dropped studio booking at any point following written receipt of a studio confirmation or challenge (if applicable). In the event we are unable to rebook the cancelled studio(s), the cancellation fee is equivalent to the full, undiscounted studio rate. If we are successful in rebooking the applicable spaces, cancellation fees are waived.

### Payment

Pier59 Studios requires advance payment on the studio rate and your equipment order. Any expenses incurred over and above the advanced fees are invoiced on Net 30 Terms.

### Equipment

We have an extensive range of equipment and require that all grip and electric rentals come through Pier59 Studios when shooting on site.

### Call Times

We require receipt of your finalized call time no later than 8:00 pm the evening prior your arrival. If a call time is not received by 8:00 pm the evening prior, your call time will be set to 8:00 am.

### Insurance

A valid Certificate of Insurance (COI) meeting our minimum coverages and proof of a valid worker's compensation policy are required when working at Pier59 Studios.

### EQ Advances

Cancellation fees are applicable to a dropped studio booking at any point following written receipt of a studio confirmation or challenge (if applicable). In the event we are unable to rebook the cancelled studio(s), the cancellation fee is equivalent to the full, undiscounted studio rate. If we are successful in rebooking the applicable spaces, cancellation fees are waived.

### Day Length

Unless otherwise agreed in writing, our stills and editorial rates are based on 10-hour days between the hours of 7:00 am and 8:00 pm. Motion rates are based on a 12-hour day between the hours of 7:00 am and 10:00 pm. Overtime (OT) charges are applicable to occupancy beyond the contracted day length, or outside of the time frames outlined above.

### Catering

Pier59 Studios offers top-tier in-house catering solutions for your convenience. We've also partnered with several industry leading caterers to allow our clients a depth and diversity of menus to choose from. Please note that outside catering fees apply should you elect to utilize an unassociated vendor for food and beverage services on set.

## Additional Details

### Freight Elevator

- 7'6"W x 17'D x 7'3"H
- 10,000 lb. Weight Capacity

### Amenities

- Hair & Makeup Stations
- Stylist Needs
- Furnished Client Area
- Mac Computers
- Bluetooth Audio Connection
- Wireless Internet Access
- Private Bathrooms & Showers Available
- In-House Catering & Private Chef Available
- Each Studio Equipped with Sink

### Overtime Rates

**10-Hour Day: Stills**

**12-Hour Day: Motion**

- 7:00 AM - 8:00 PM: \$200/Hour
- 8:00 PM - 12:00 AM: \$300/Hour
- 2:00 AM - 3:00 AM: \$400/Hour
- 3:00 AM - 7:00 AM: \$500/Hour
- Per Additionally Booked Studio: \$100/Hour



# Studios Complex

# COMPLEX





# Virtual Production Stages

PIER59 STUDIOS

# STAGE C VIRTUAL PRODUCTION



## Size / Type

6500sf. / Dark Studio

## Specs

**Dimensions:** 78'W x 85'D x 31.5'H to Beams / 45' to the Ceiling / 20'H to the Grid Over the Cyc

**Cyclorama:** Two Wall, One Corner  
49'W x 26'6"D x 20'H Back Wall x 14'6"H  
Wall on Right

**Stage Door To:** Freight Area 9'10"W x 10'6"H  
/ Reception Area 13'4"W x 14'6"H

**Power:** 600 Amps 3 Phase Distributed by  
One 200 Amp & One 400 Amp 3 Phase  
Camlocks

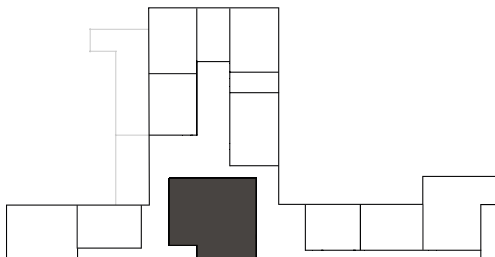
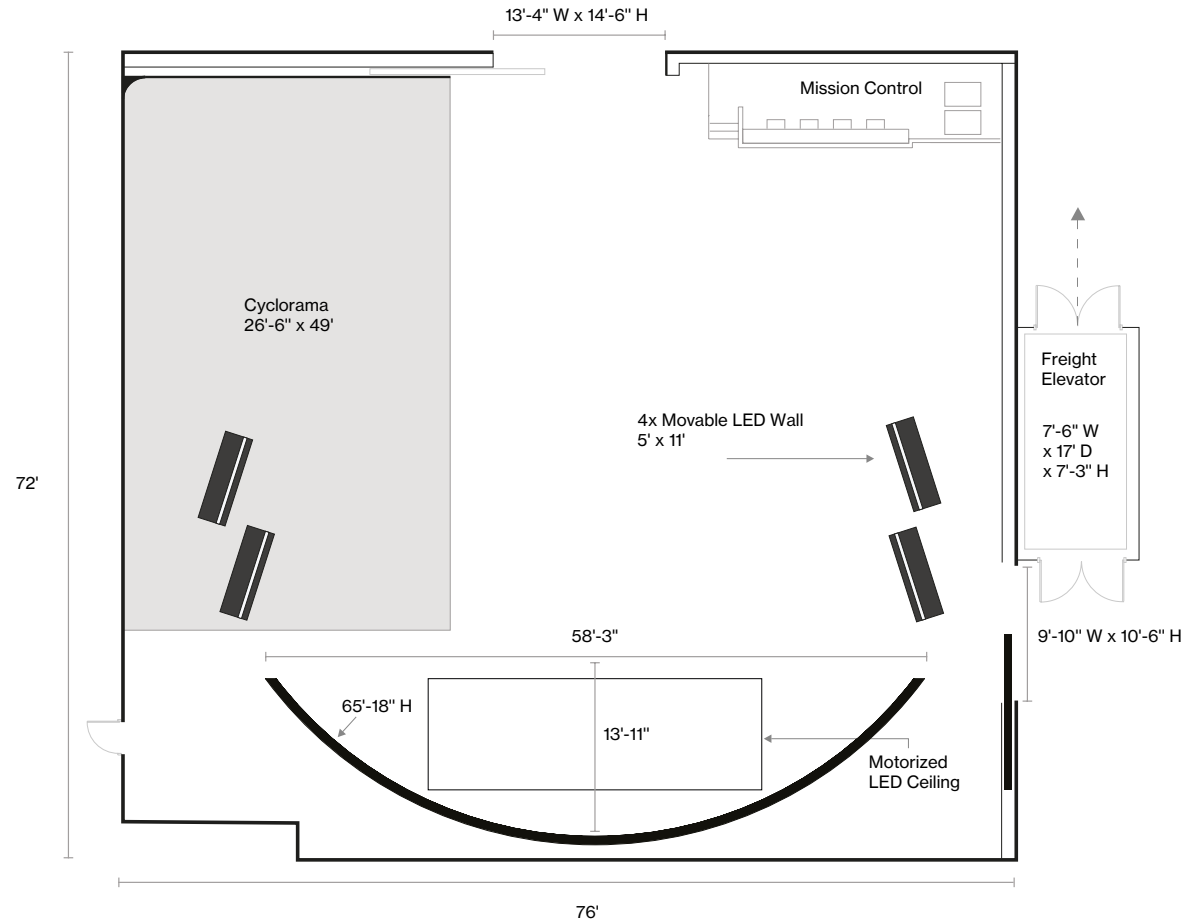
**Vehicle Accessible**

## Contact

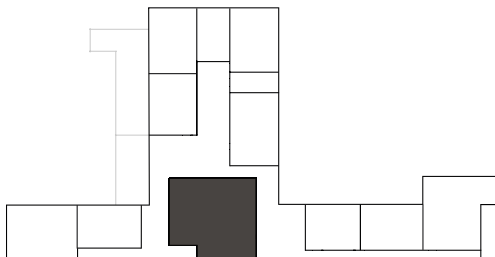
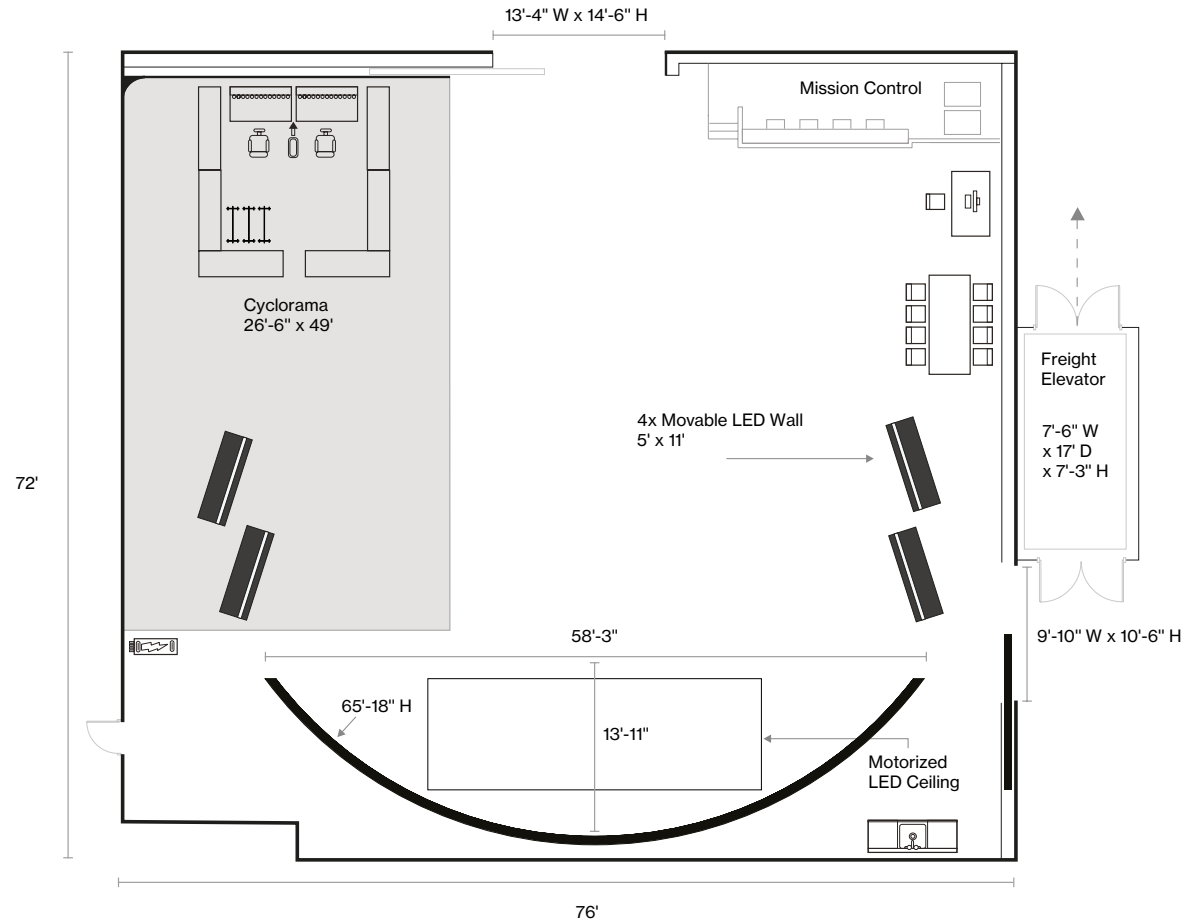
[info@pier59.com](mailto:info@pier59.com)  
212.691.5959

59 Chelsea Piers 2nd floor  
New York, New York 10011

# STAGE C VIRTUAL PRODUCTION



# STAGE C VIRTUAL PRODUCTION





# STAGE 2



## Size / Type

2800sf. / Semi-Daylight Studio

## Specs

**Dimensions:** 44'W x 63'7"D x 16'H to Beams / 19'-31' Slope of Ceiling

**Cyclorama:** 3 Wall, 2 Corner, 42'W x 24'D x 16'H to Beams

**North Facing Window:** One, 17'9"W x 11'H / Blackout Capable

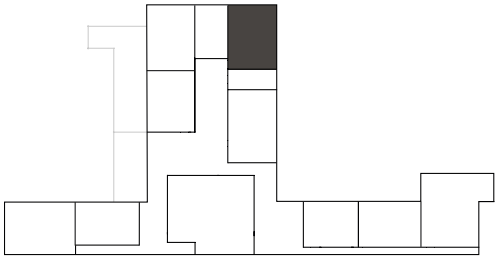
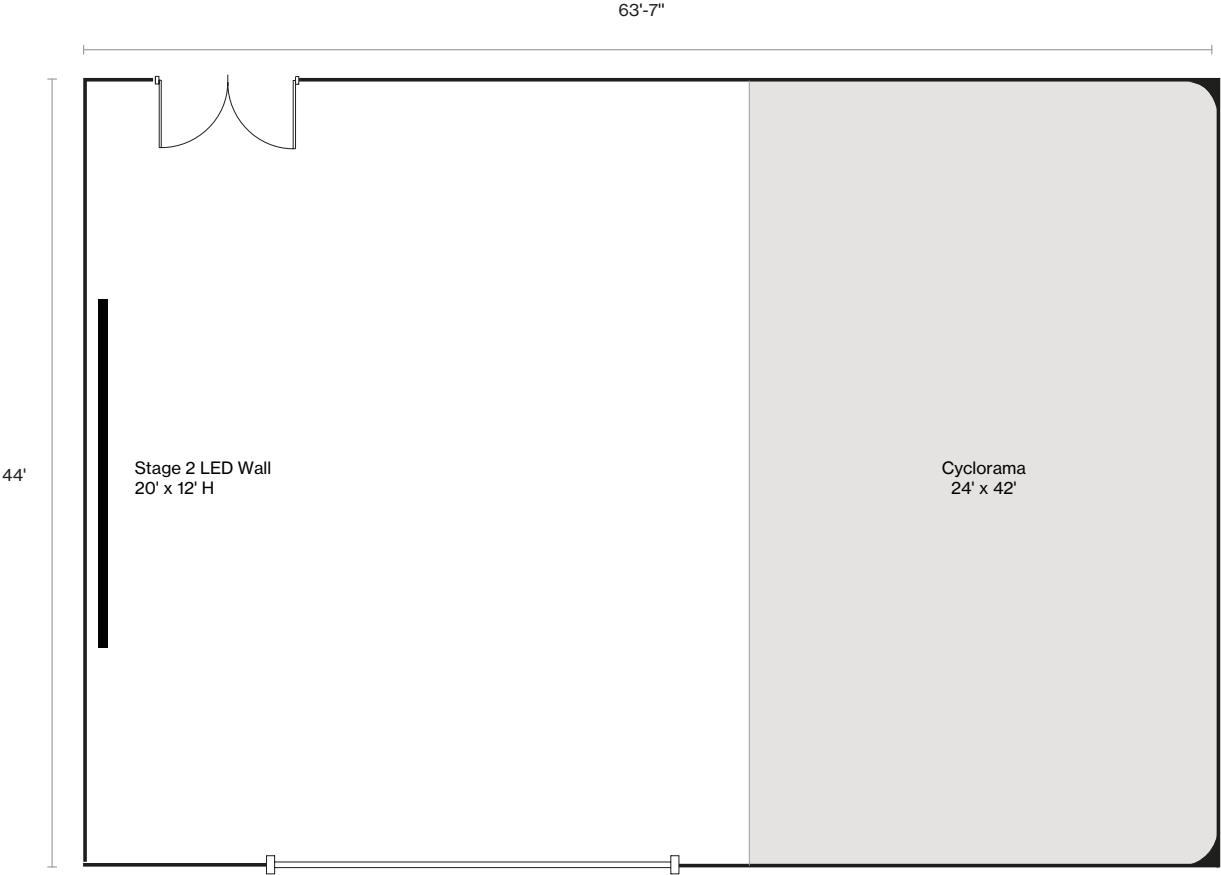
**Power:** 200 Amp 3 Phase Distributed by Camlock Service

## Contact

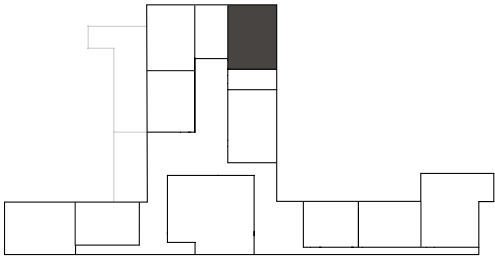
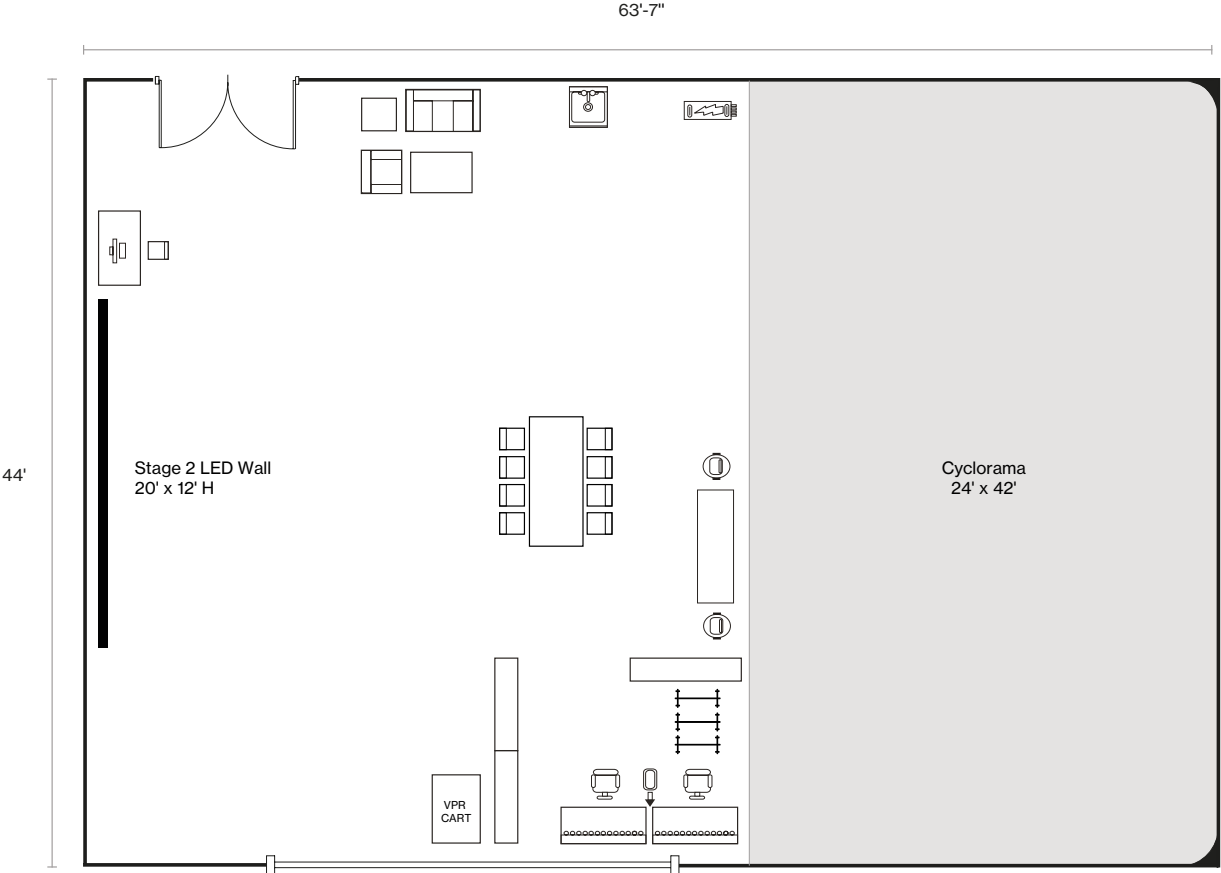
**info@pier59.com**  
212.691.5959

59 Chelsea Piers 2nd floor  
New York, New York 10011

# STAGE 2



# STAGE 2





# Still + Motion Studios

PIER59 STUDIOS

# STAGE C



## Size / Type

6500sf. / Dark Studio

## Specs

**Dimensions:** 78'W x 85'D x 31.5'H to Beams / 45' to the Ceiling / 20'H to the Grid Over the Cyc

**Cyclorama:** Two Wall, One Corner  
49'W x 26'6"D x 20'H Back Wall x 14'6"H  
Wall on Right

**Stage Door To:** Freight Area 9'10"W x 10'6"H  
/ Reception Area 13'4"W x 14'6"H

**Power:** 600 Amps 3 Phase Distributed by  
One 200 Amp & One 400 Amp 3 Phase  
Camlocks

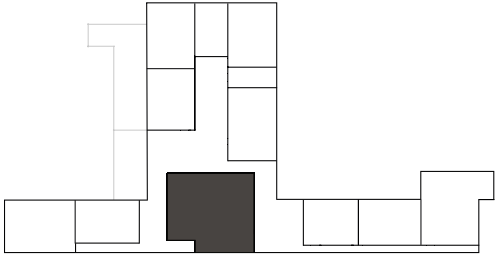
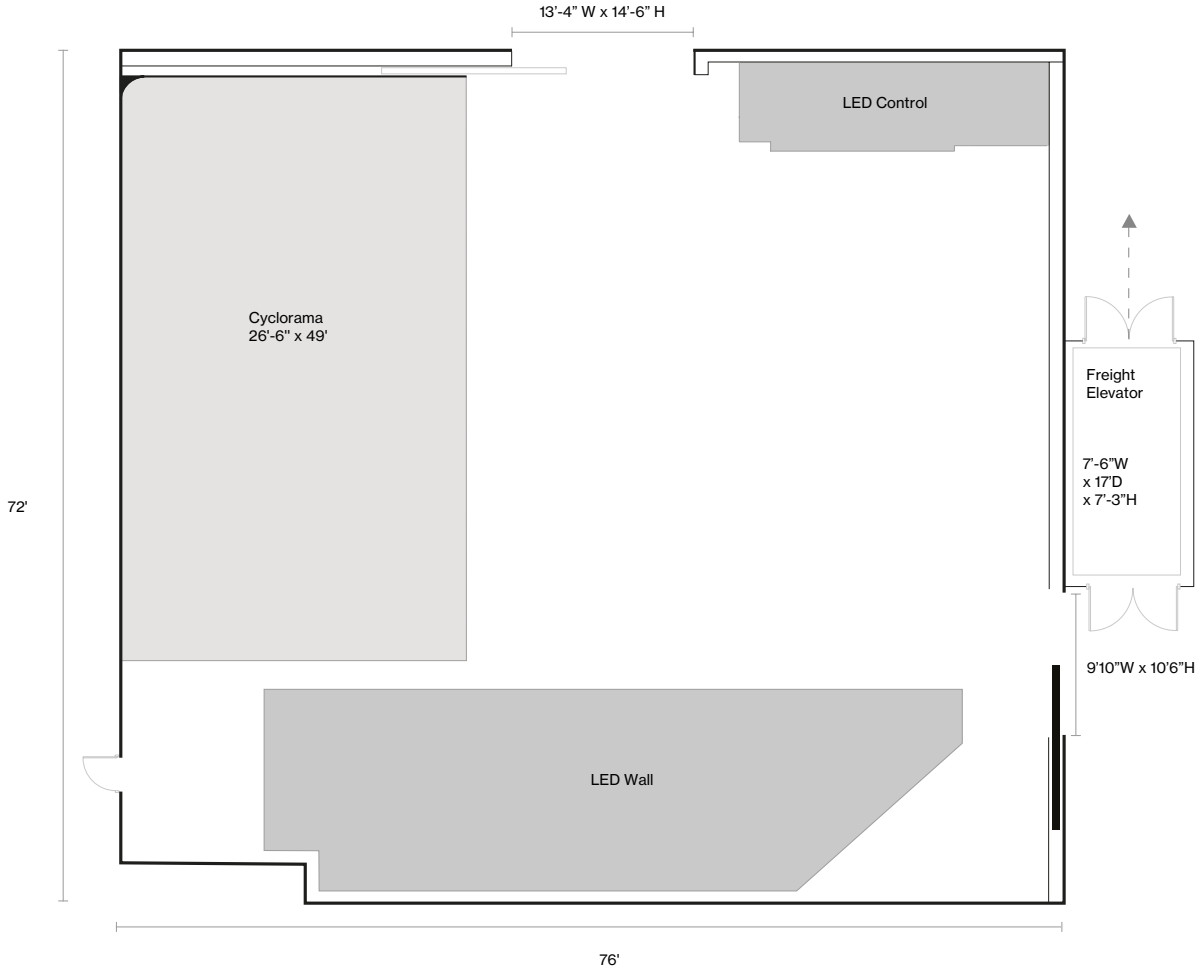
**Vehicle Accessible**

## Contact

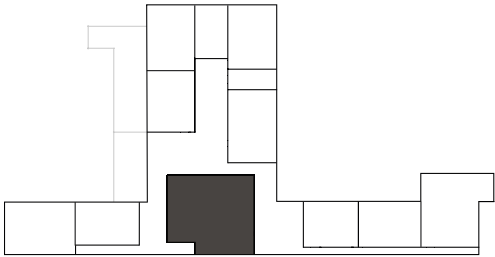
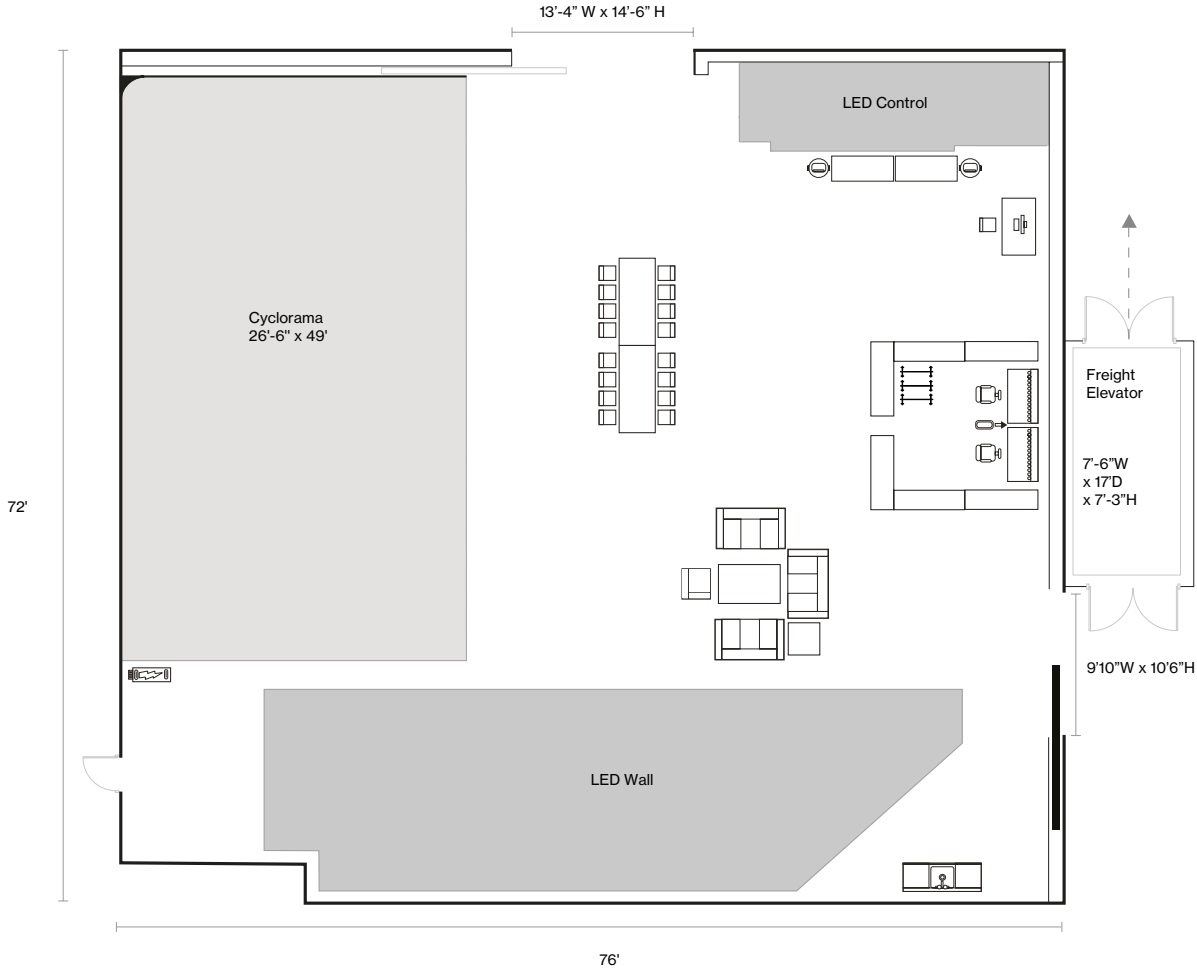
[info@pier59.com](mailto:info@pier59.com)  
212.691.5959

59 Chelsea Piers 2nd floor  
New York, New York 10011

# STAGE C



# STAGE C



PIER59 STUDIOS

# STUDIO 1



## Size / Type

3000sf. / Semi-Daylight Studio

## Specs

**Dimensions:** 44'W x 68'2"D x 16'H to Beams / 19'-31' Slope of Ceiling

**Cyclorama:** 3 Wall, 2 Corner, 42'W x 24'D x 16'H to Beams

**North Facing Window:** One, 17'10"W x 11'H / Blackout Capable

**Direct Freight Access:** Roll Gate, 10'W x 10'H

**Power:** 400 Amp 3 Phase Distributed by Two 200 Amp Camlock Services

**Vehicle Accessible**

**Salon Hair Washing Station**

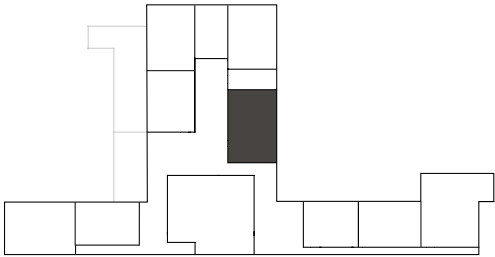
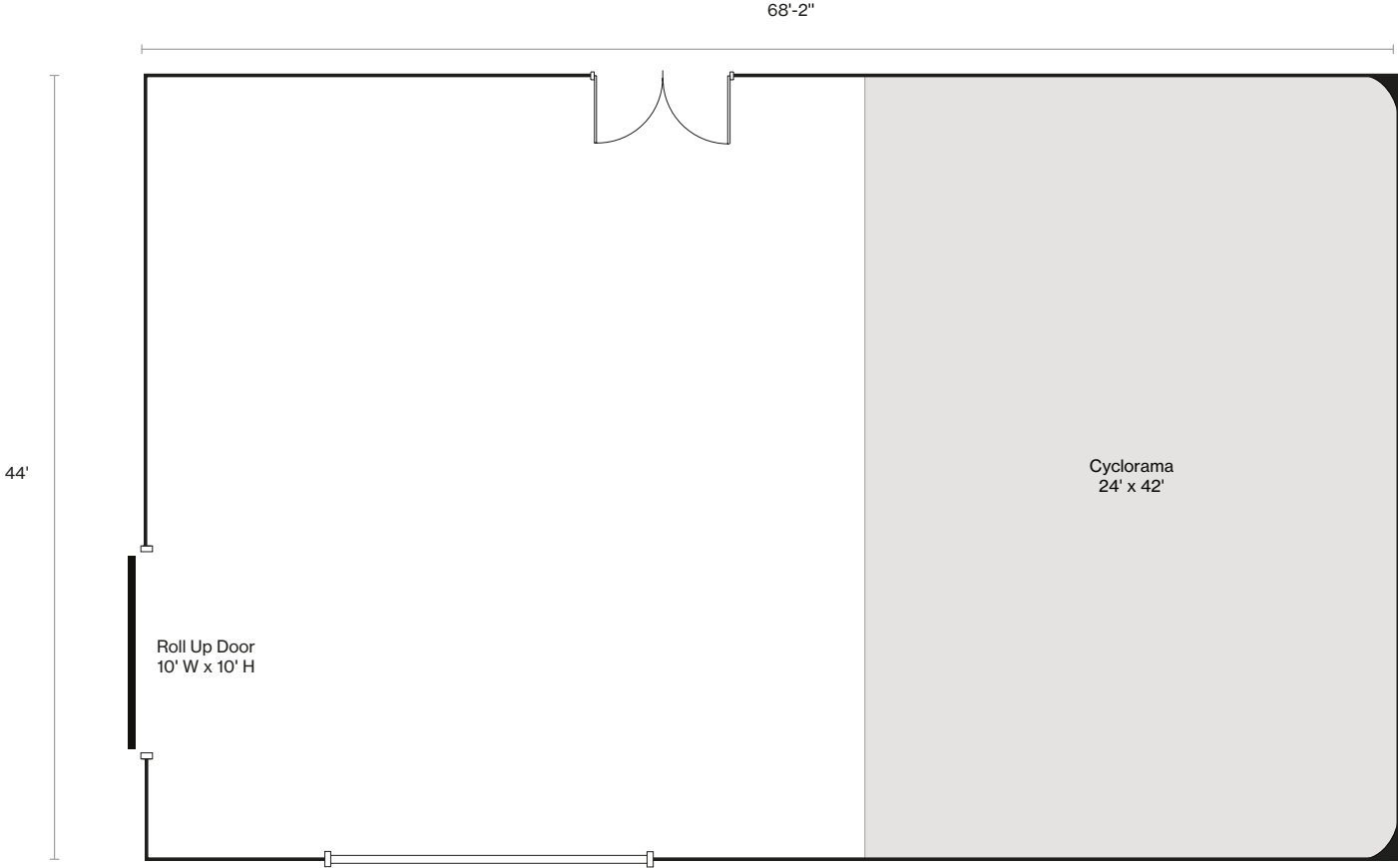
## Contact

[info@pier59.com](mailto:info@pier59.com)  
212.691.5959

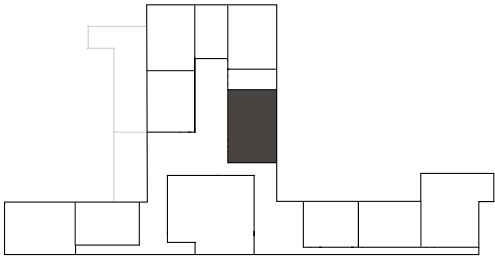
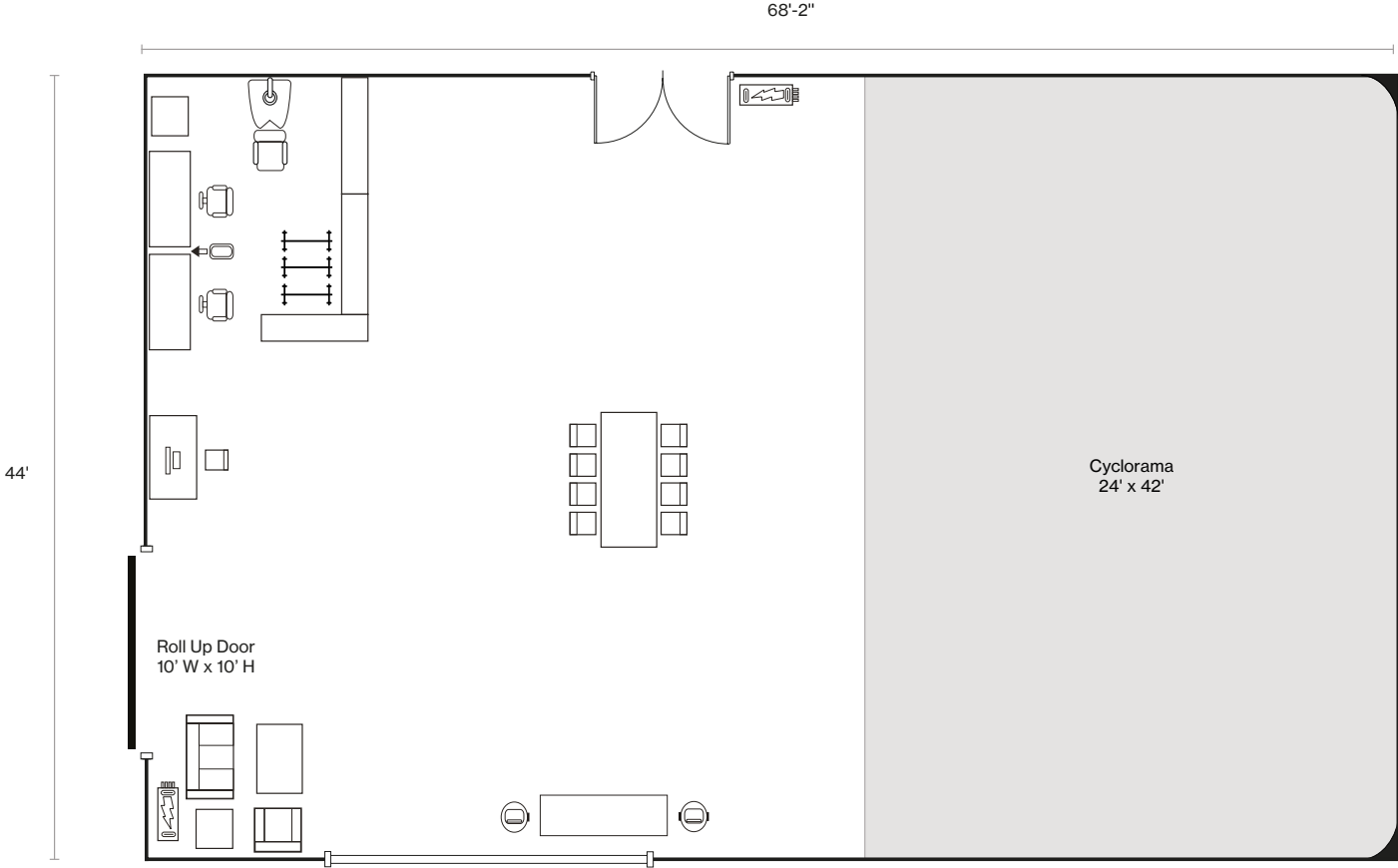
59 Chelsea Piers 2nd floor  
New York, New York 10011



# STUDIO 1



# STUDIO 1



PIER59 STUDIOS

# STUDIO 2

## Size / Type

2800sf. / Semi-Daylight Studio

## Specs

**Dimensions:** 44'W x 63'7"D x 16'H to Beams  
/ 19'-31' Slope of Ceiling

**Cyclorama:** 3 Wall, 2 Corner,  
42'W x 24'D x 16'H to Beams

**North Facing Window:** One, 17'9"W x 11'H /  
Blackout Capable

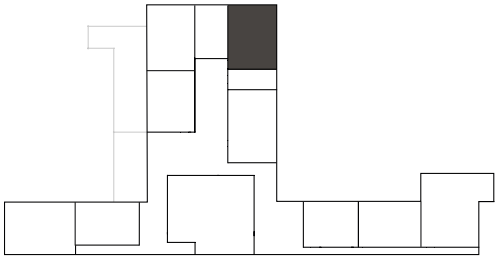
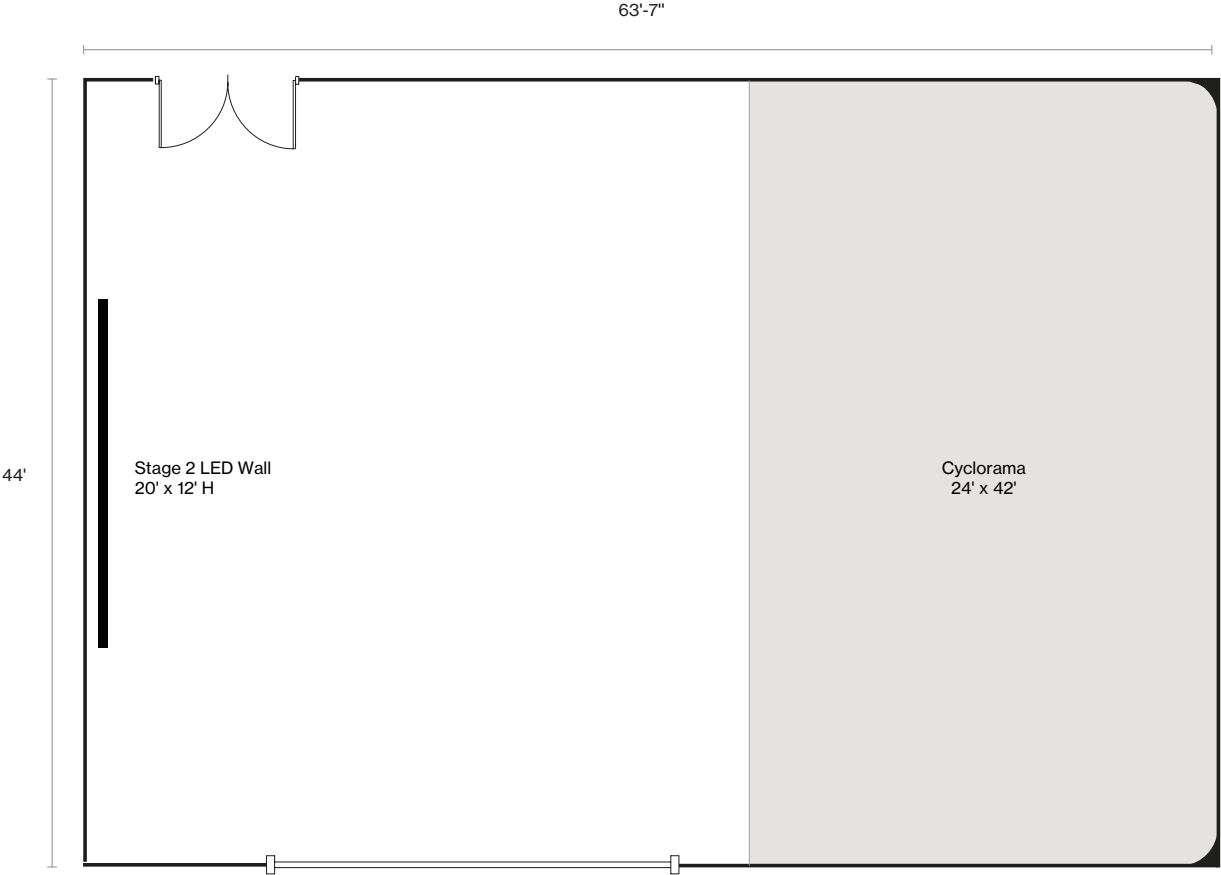
**Power:** 200 Amp 3 Phase Distributed by  
Camlock Service

## Contact

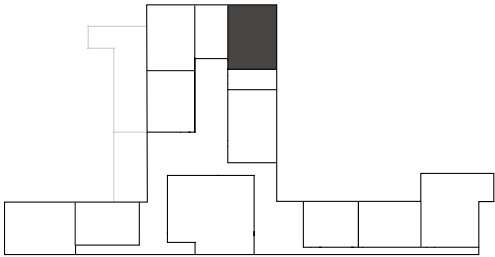
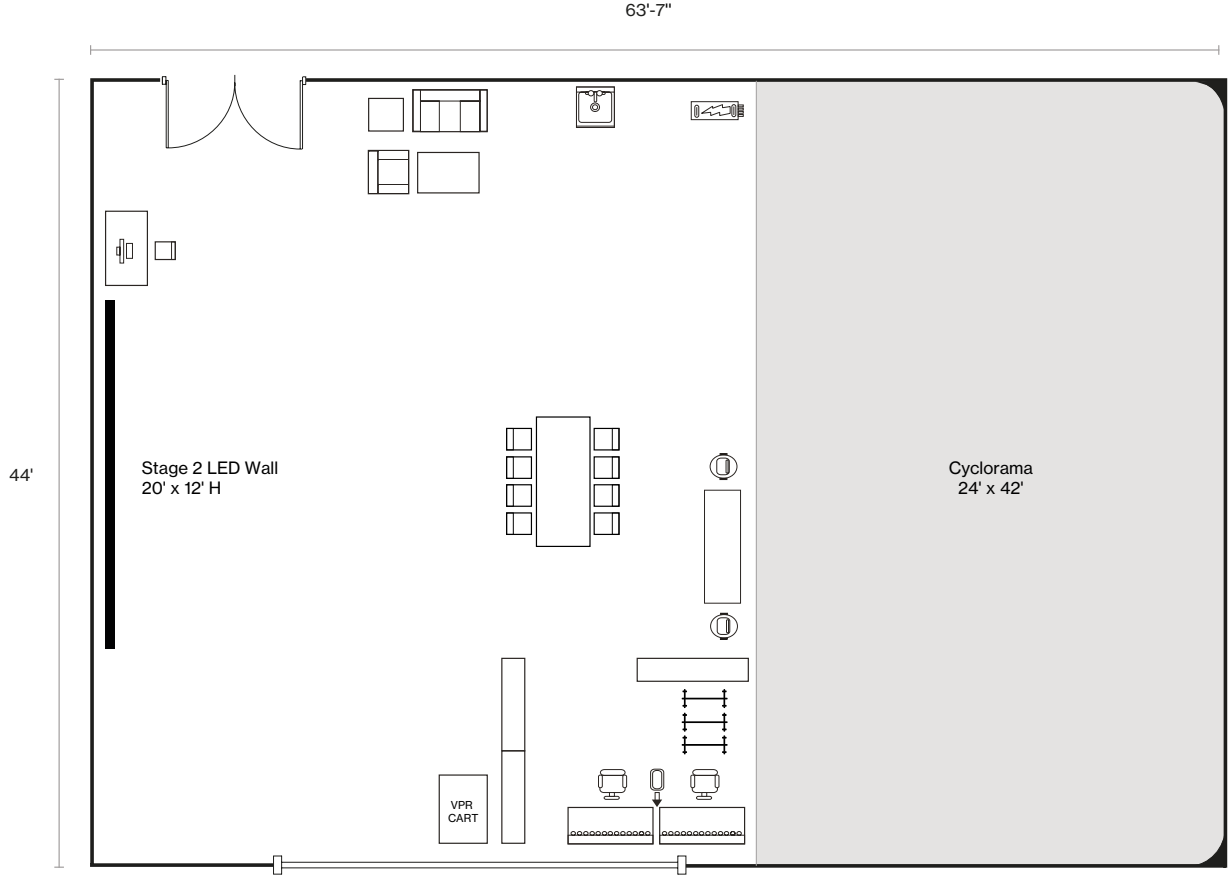
[info@pier59.com](mailto:info@pier59.com)  
212.691.5959

59 Chelsea Piers 2nd floor  
New York, New York 10011

# STUDIO 2



# STUDIO 2



PIER59 STUDIOS

# STUDIO 3

## Size / Type

1650sf. / Dark Studio

## Specs

**Dimensions:** 32'W x 52'6"D x 13'5"H to the Grid Over the Cyc

**Cyclorama:** 3 Wall, 2 Corner, 30'W x 25'D x 13'5"H

**Power:** 200 Amp 3 Phase Distributed by Camlock Service

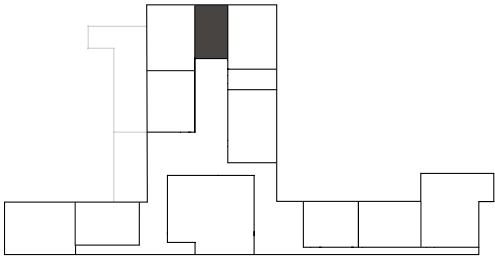
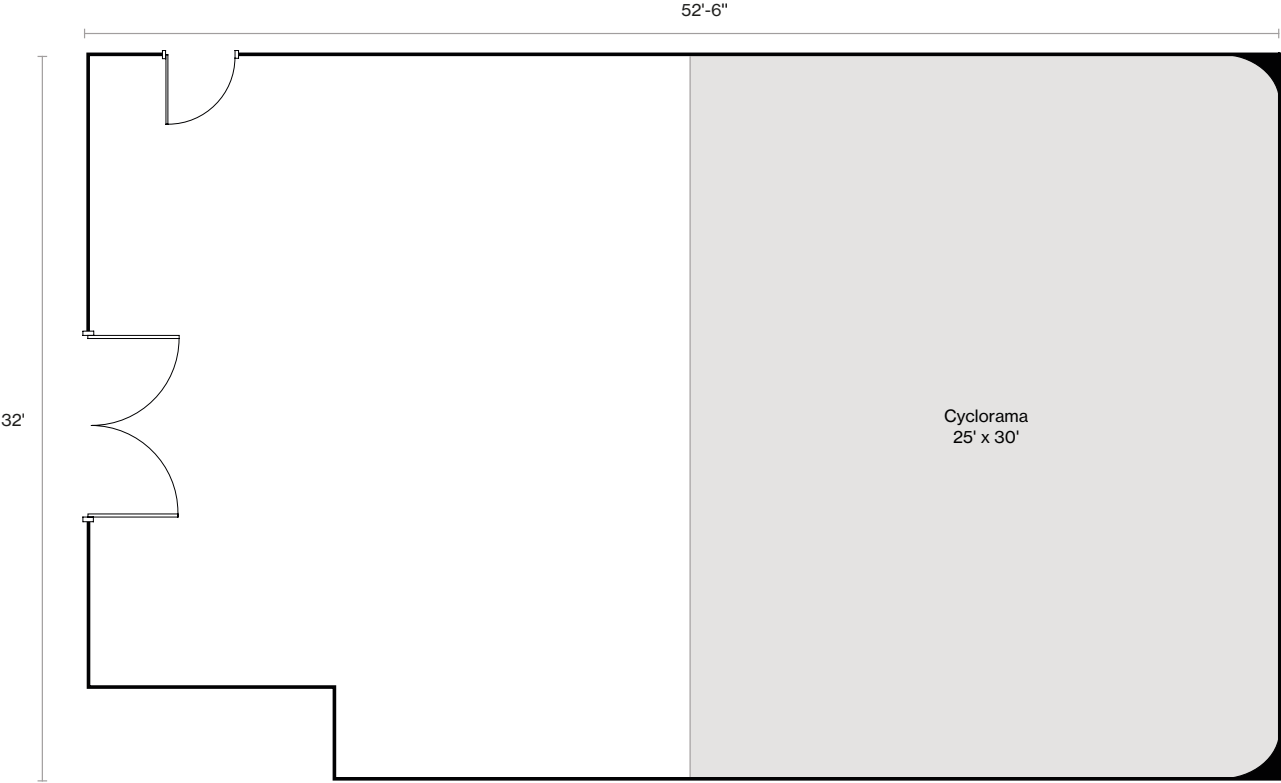
**Salon Hair Washing Station**

## Contact

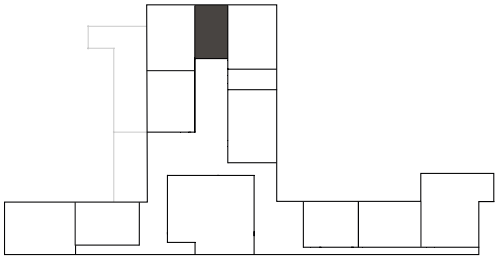
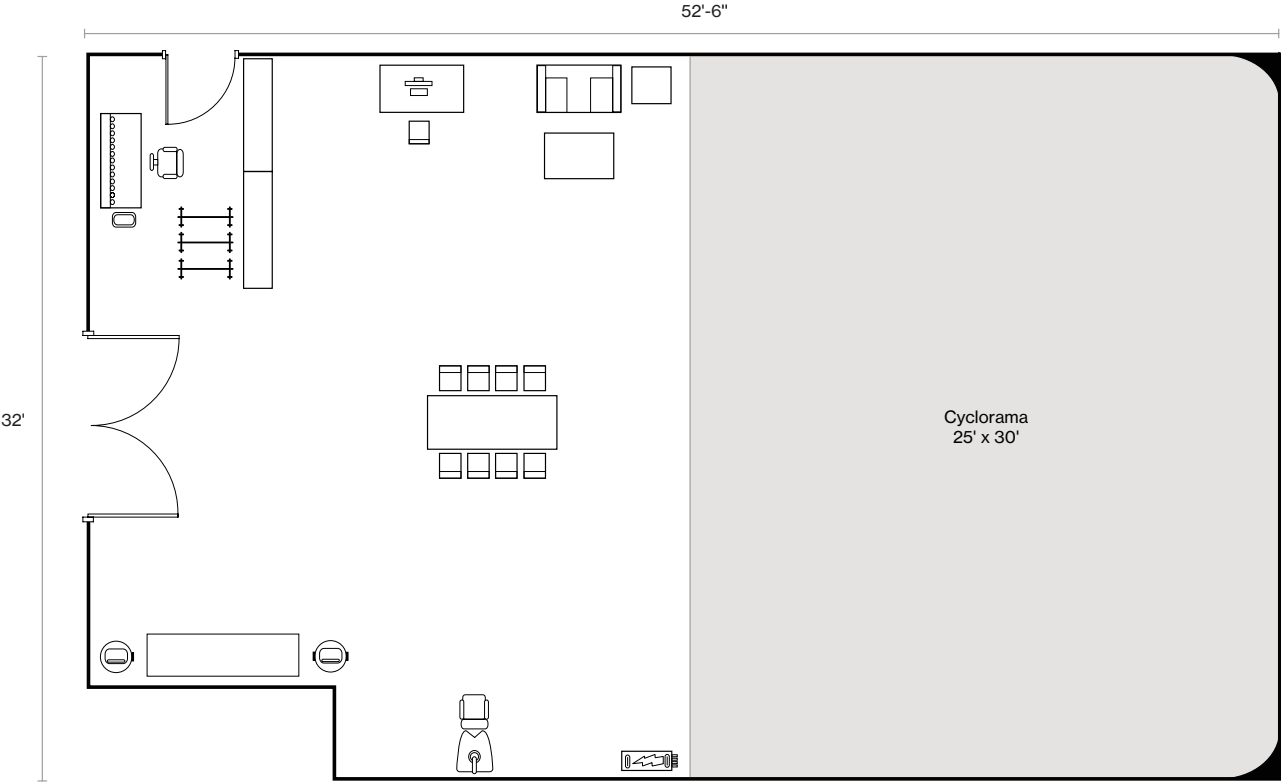
[info@pier59.com](mailto:info@pier59.com)  
212.691.5959

59 Chelsea Piers 2nd floor  
New York, New York 10011

# STUDIO 3



# STUDIO 3





PIER59 STUDIOS

# STUDIO 4



## Size / Type

2900sf. / South Daylight Studio

## Specs

**Dimensions:** 46'W x 63'D x 16'H to Beams /  
19'-31' Slope of Ceiling

**Cyclorama:** 2 Wall, 1 Corner,  
26'W x 25'D x 16'H to Beams

**South Facing Windows:** Wall of Three,  
17'10"W x 11'H / Blackout Capable

**Skylight:** One, 15'W x 18'D / Blackout  
Capable

**Doors Leading to Sun Deck:** 5'8"W x 6'11"H

**Retractable Wall to Studio 5:**  
46'W x 13'10"H

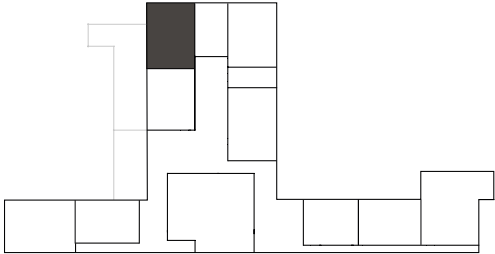
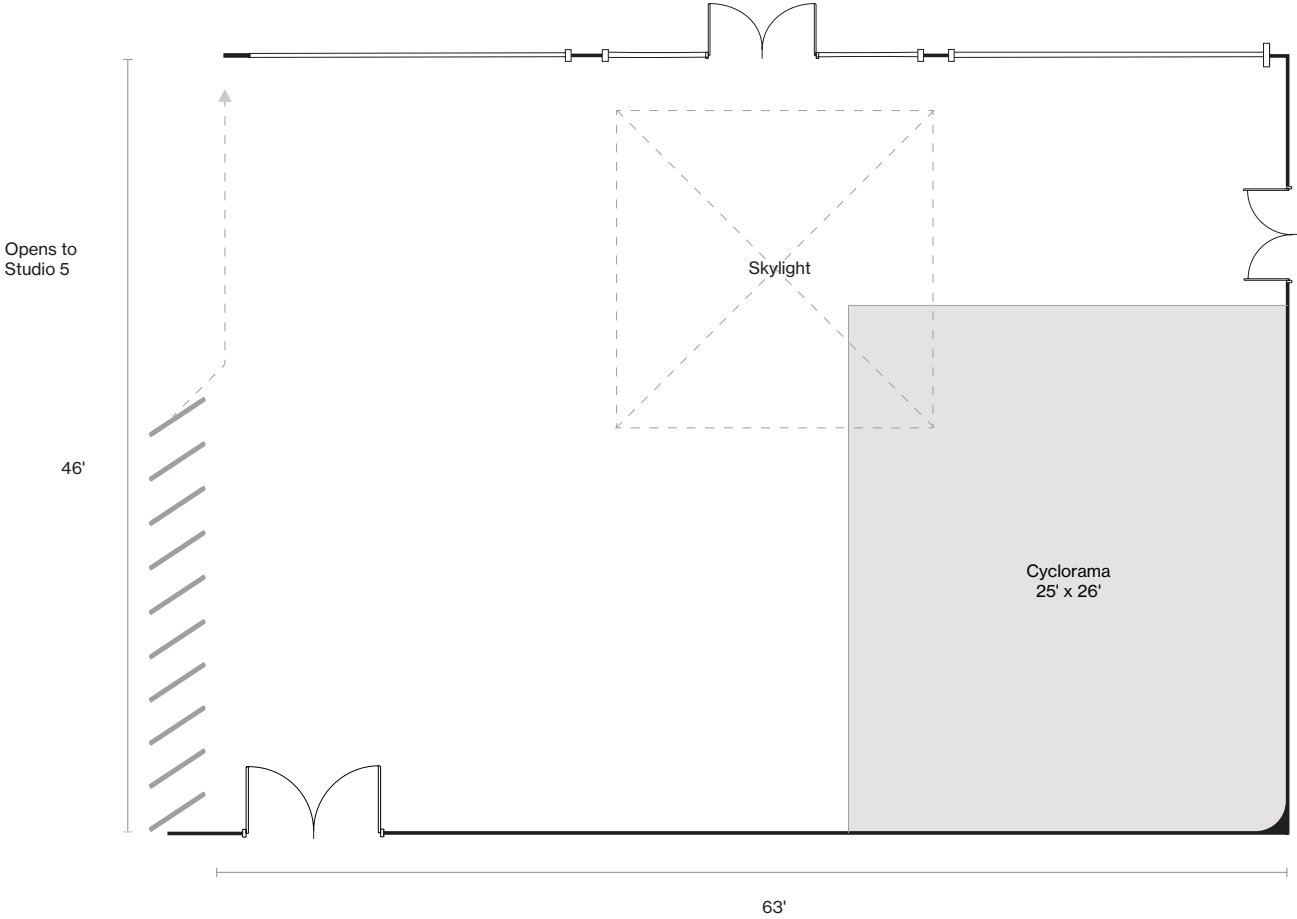
**Power:** 200 Amp 3 Phase Distributed by  
Camlock Service

## Contact

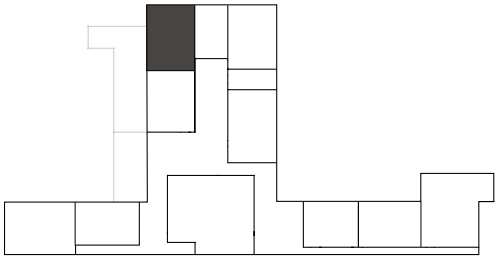
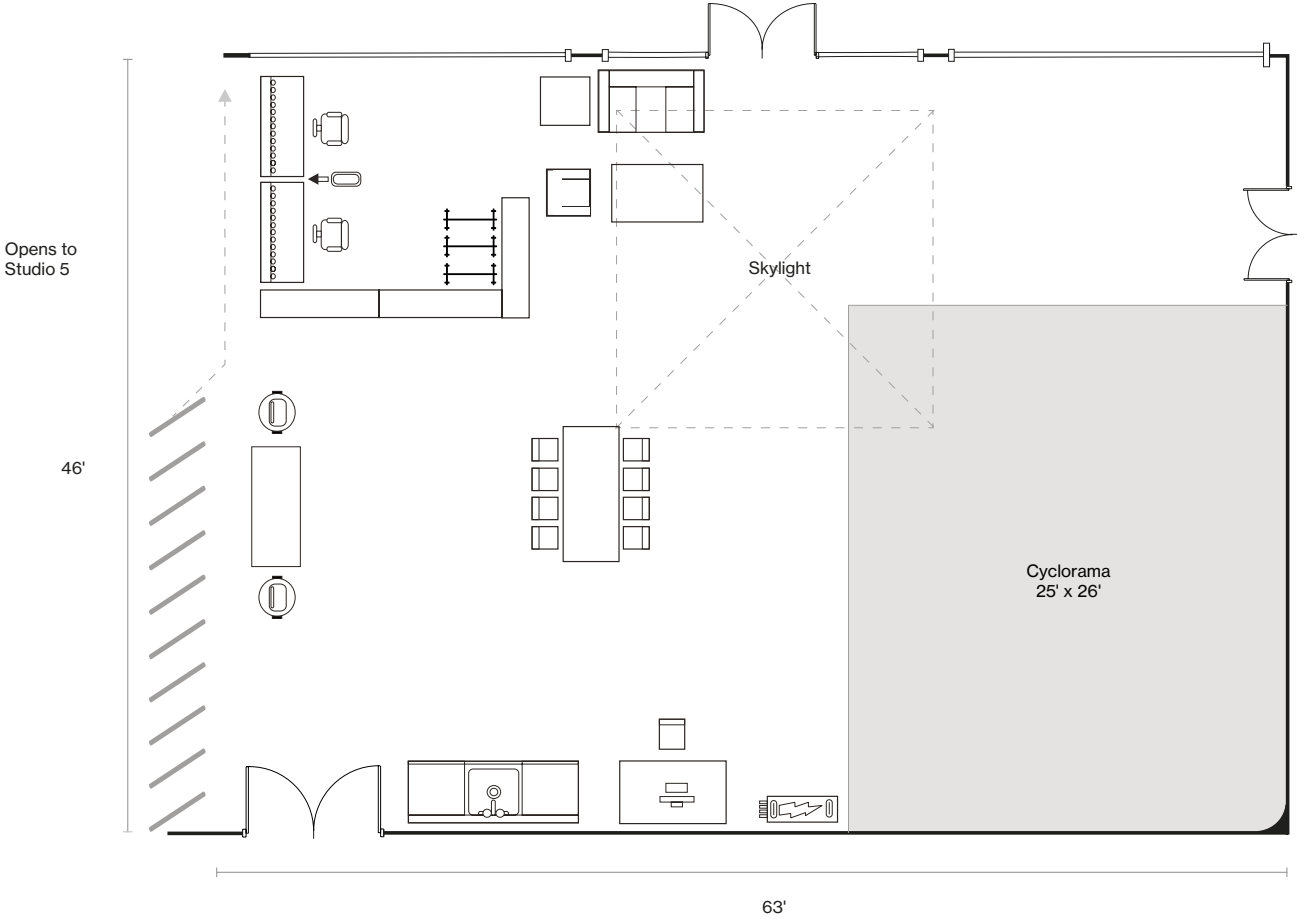
[info@pier59.com](mailto:info@pier59.com)  
212.691.5959

59 Chelsea Piers 2nd floor  
New York, New York 10011

# STUDIO 4



# STUDIO 4



PIER59 STUDIOS  
**STUDIO 5**



**Size / Type**

2700sf. / South Daylight Studio

**Specs**

**Dimensions:** 46'W x 58'8"D x 16'H to Beams / 19'-31' Slope of Ceiling

**Cyclorama:** One Wall, 30'W x 24'D x 16'H to Beams

**South Facing Windows:** Wall of Three, 17'9"W x 11'H / Blackout Capable

**Skylight:** One, 15'W x 18'D / Blackout Capable

**Doors Leading to Sun Deck:** 5'8"W x 6'11"H

**Retractable Wall to Studio 4:** 46'W x 13'10"H

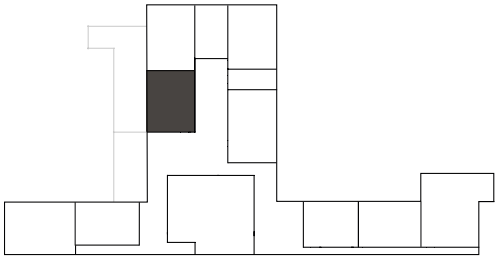
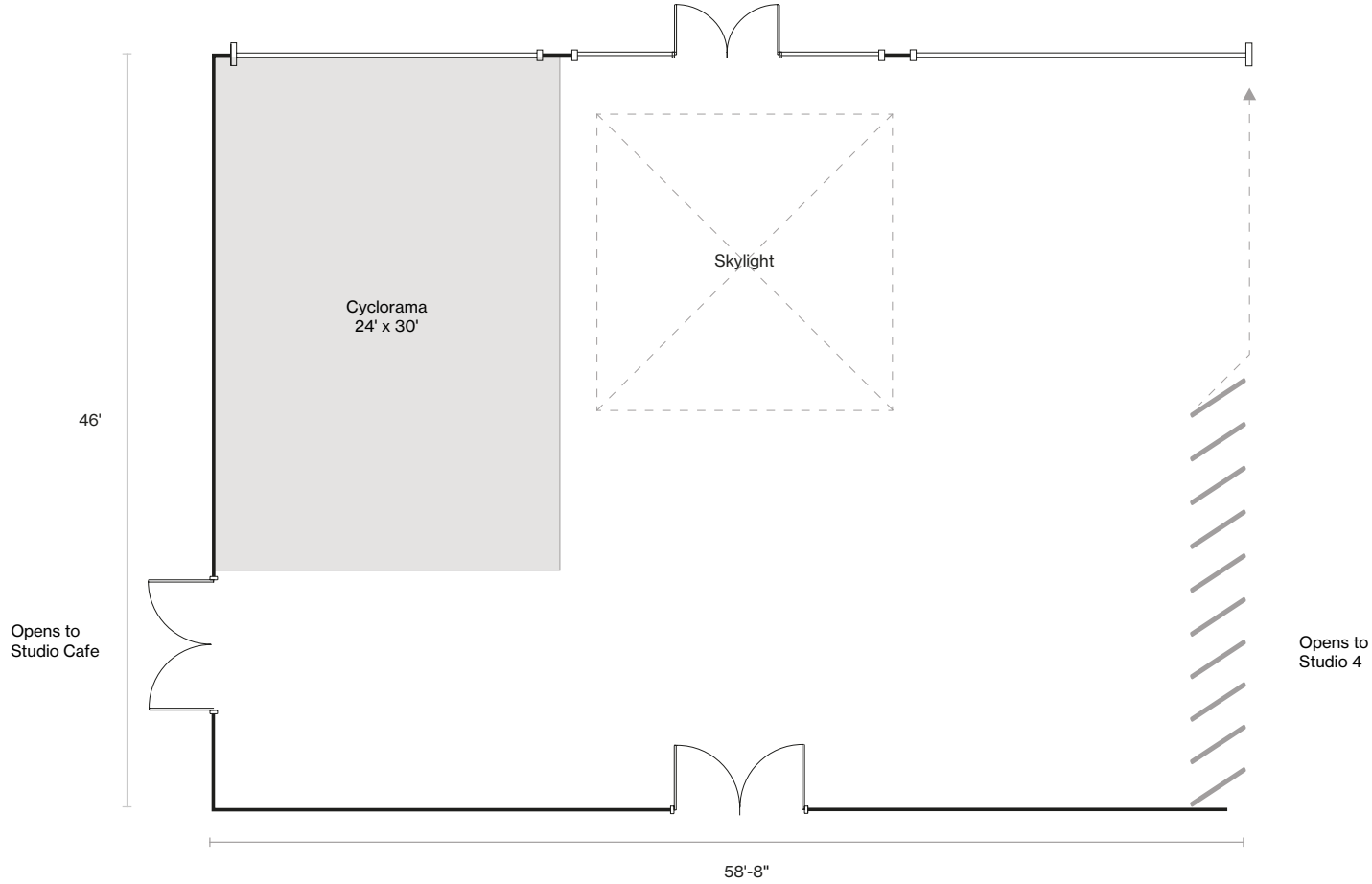
**Power:** 200 Amp 3 Phase Distributed by Camlock Service

**Contact**

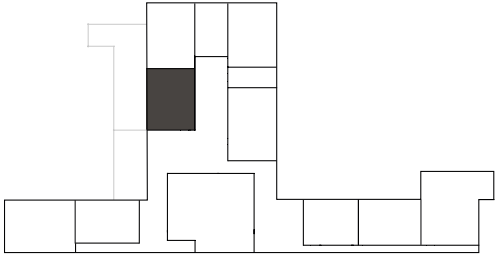
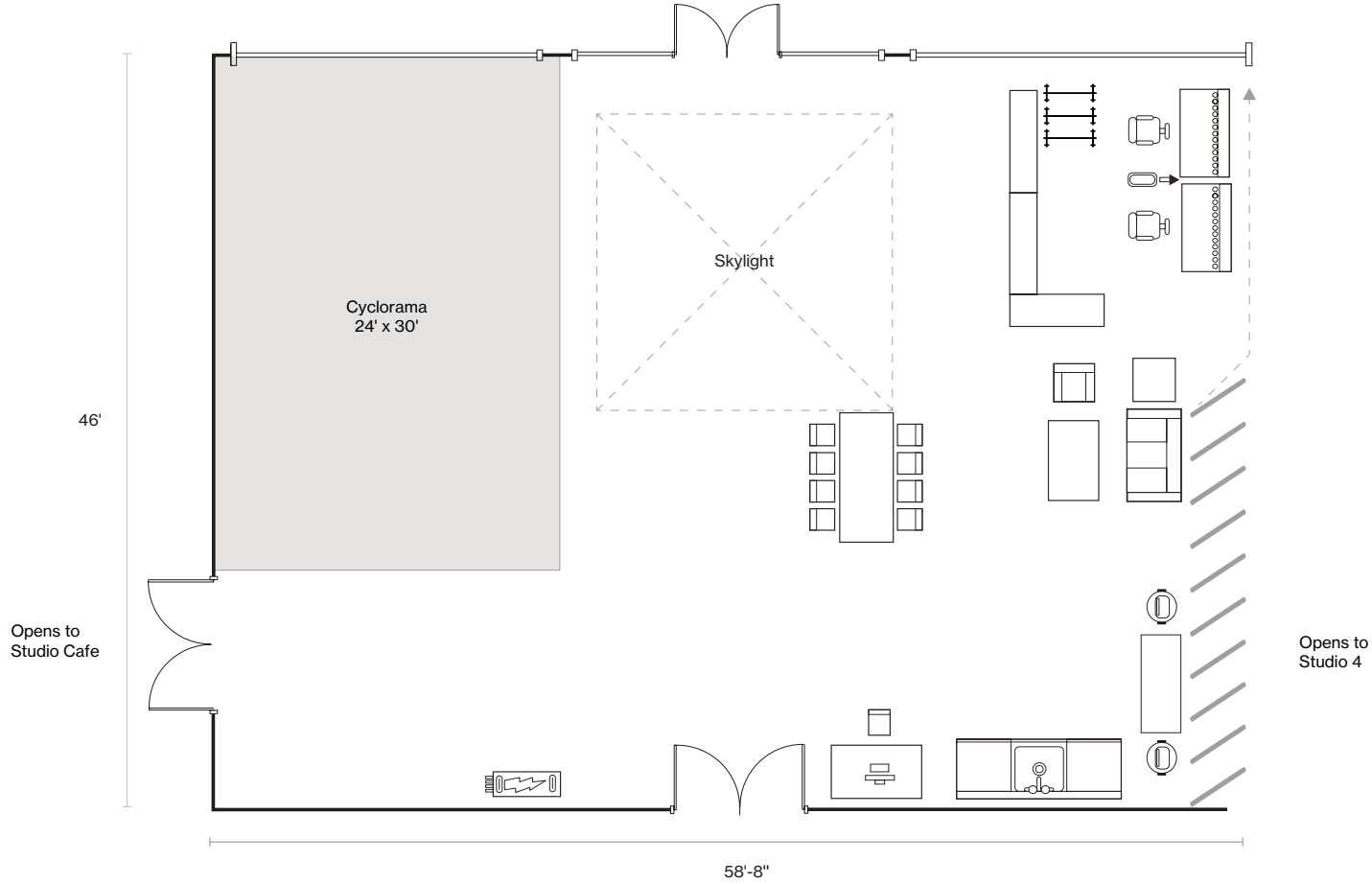
[info@pier59.com](mailto:info@pier59.com)  
212.691.5959

59 Chelsea Piers 2nd floor  
New York, New York 10011

# STUDIO 5



# STUDIO 5



PIER59 STUDIOS

# STUDIOS 4+5

## Size / Type

5600sf. / Convertable Studios

## Studio 4 Specs

**Dimensions:** 46'W x 63'D x 16'H to Beams / 19'-31' Slope of Ceiling

**Cyclorama:** 2 Wall, 1 Corner, 26'W x 25'D x 16'H to Beams

**South Facing Windows:** Wall of Three, 17'10"W x 11'H / Blackout Capable

**Skylight:** One, 15'W x 18'D / Blackout Capable

**Doors Leading to Sun Deck:** 5'8"W x 6'11"H

**Retractable Wall to Studio 5:** 46'W x 13'10"H

**Power:** 200 Amp 3 Phase Distributed by Camlock Service

## Studio 5 Specs

**Dimensions:** 46'W x 58'8"D x 16'H to Beams / 19'-31' Slope of Ceiling

**Cyclorama:** One Wall, 30'W x 24'D x 16'H to Beams

**South Facing Windows:** Wall of Three, 17'9"W x 11'H / Blackout Capable

**Skylight:** One, 15'W x 18'D / Blackout Capable

**Doors Leading to Sun Deck:** 5'8"W x 6'11"H

**Retractable Wall to Studio 4:** 46'W x 13'10"H

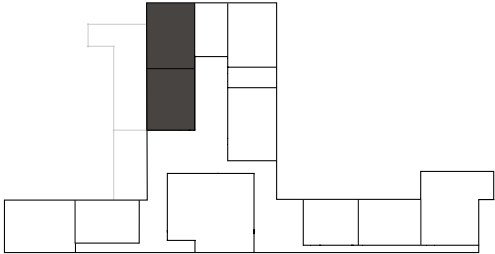
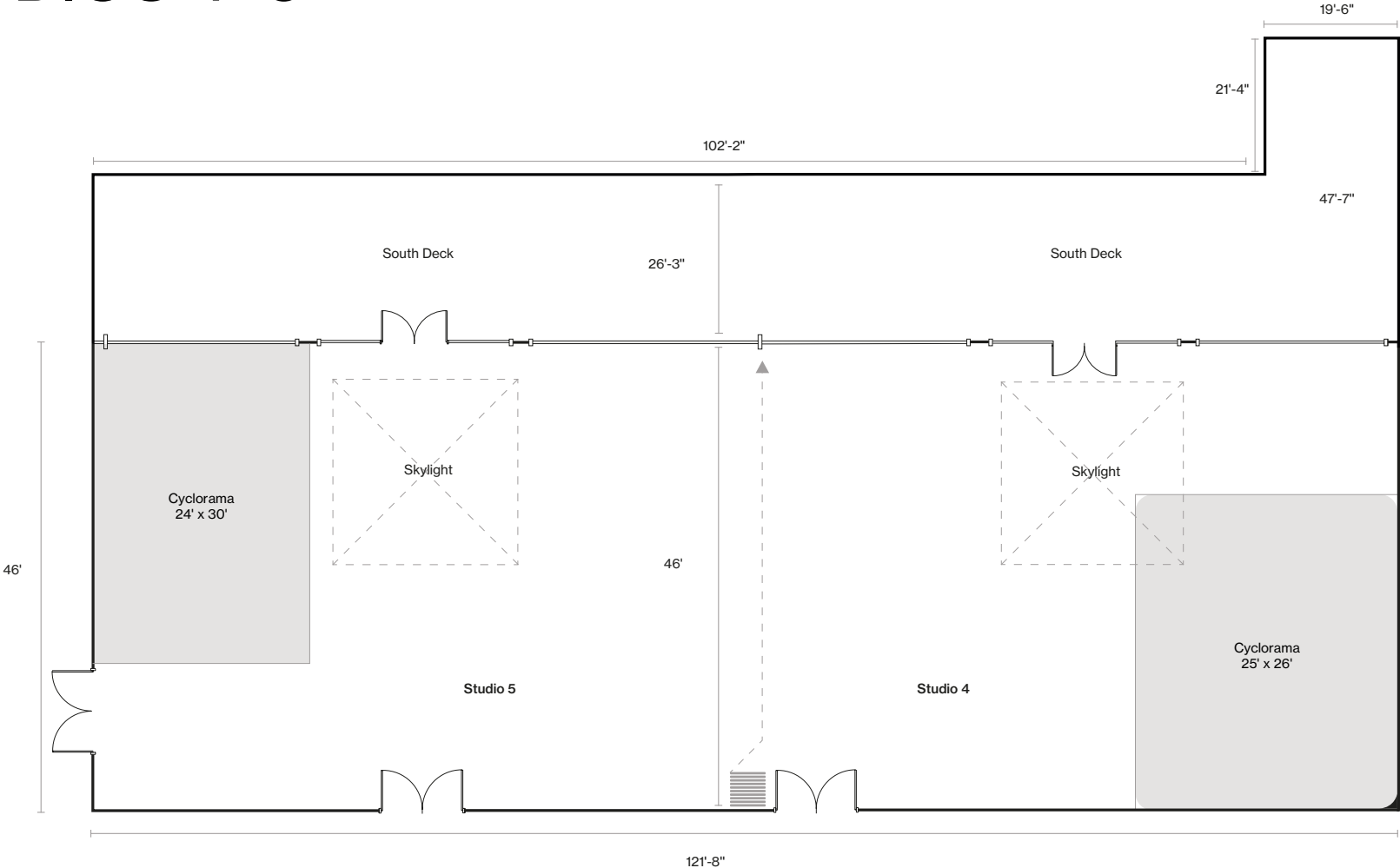
**Power:** 200 Amp 3 Phase Distributed by Camlock Service

## Contact

[info@pier59.com](mailto:info@pier59.com)  
212.691.5959

59 Chelsea Piers 2nd floor  
New York, New York 10011

# STUDIOS 4+5





PIER59 STUDIOS

# STUDIO 6



## Size / Type

2500sf. / Western Daylight Studio

## Specs

**Dimensions:** 59'6"W x 42'D x 11'6"H to Beams / 15'-18' Slope of Ceiling

**Cyclorama:** One Wall, 21'W x 20'D x 16'H

**West Facing Windows:** Wall of Two, 17'10"W x 9'H and One 11'9"W x 9'H / Blackout Capable

**Skylight:** One, 18'W x 15'D / Blackout Capable

**Retractable Wall to Studio 7:** 42'W x 10'8"H

**Power:** 200 Amp 3 Phase Distributed by Camlock Service

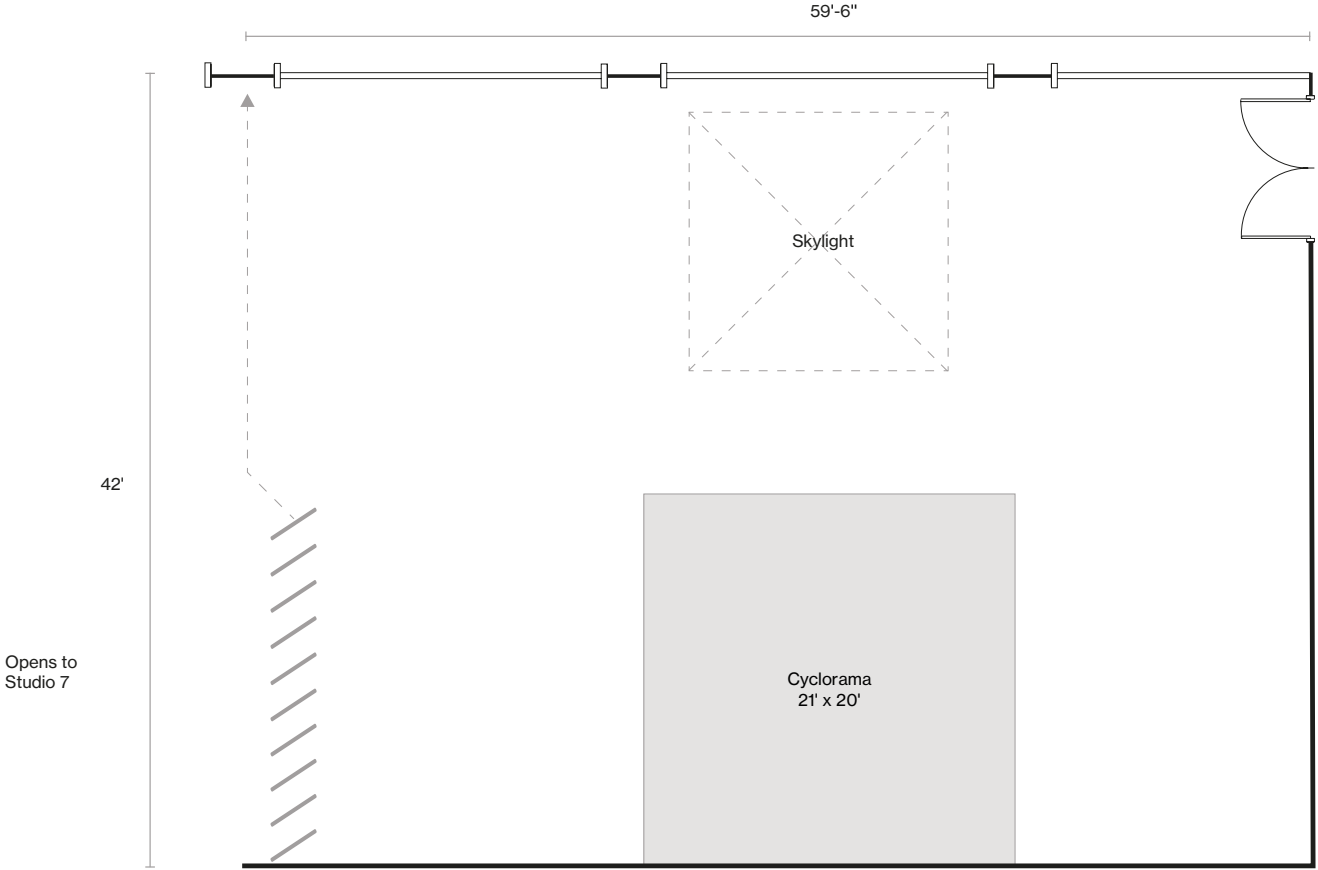
**Salon Hair Washing Station**

## Contact

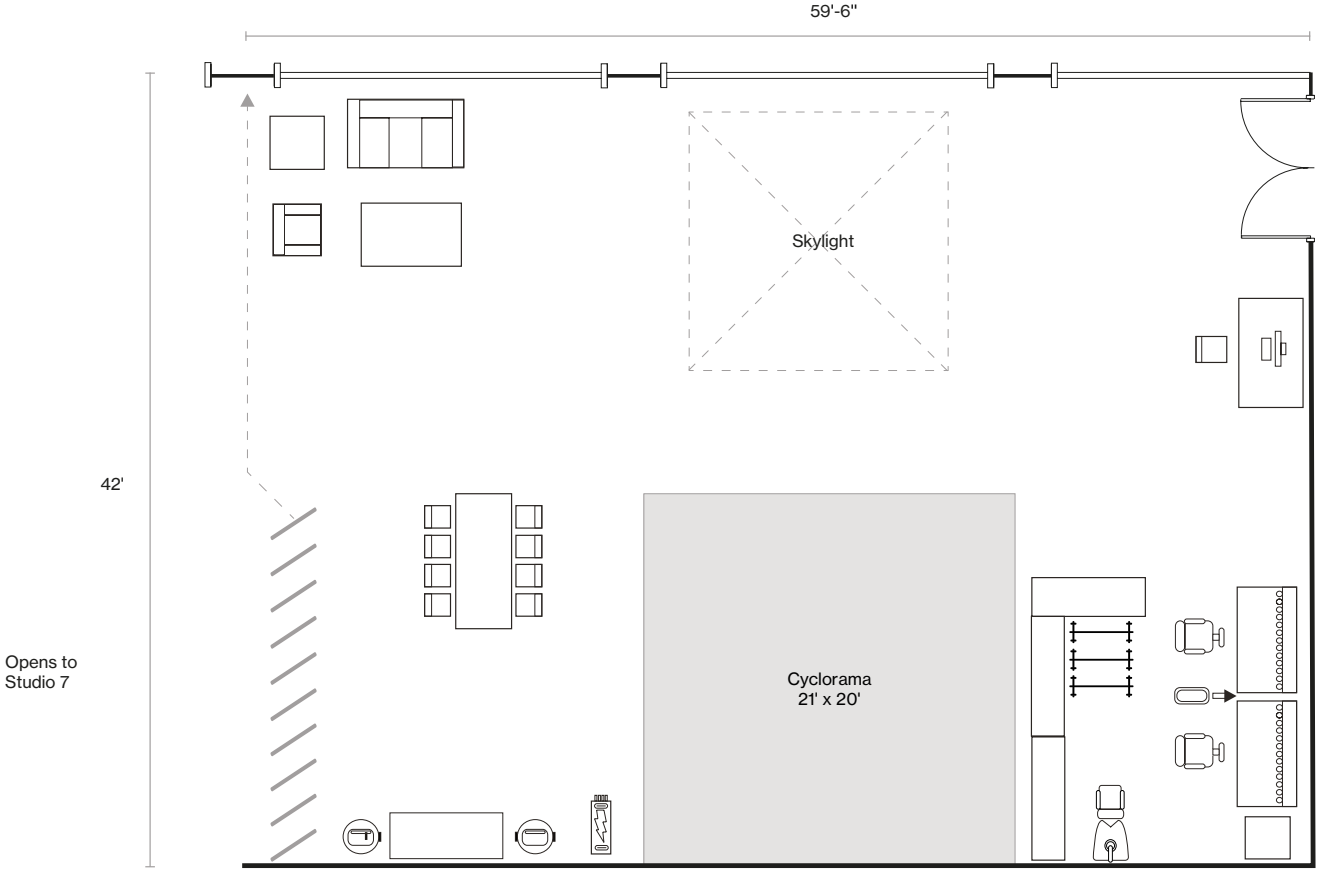
[info@pier59.com](mailto:info@pier59.com)  
212.691.5959

59 Chelsea Piers 2nd floor  
New York, New York 10011

# STUDIO 6



# STUDIO 6



PIER59 STUDIOS

# STUDIO 7



## Size / Type

3400sf. / Southwest Daylight Studio

## Specs

**Dimensions:** 65'6"W x 52'D x 11'6"H to Beams / 15'-18' Slope of Ceiling

**Cyclorama:** 2 Wall, 1 Scoop, 35'W x 23'D x 11'H

**West Facing Windows:** Wall of Three, 17'10"W x 9'H

**South Facing Window:** One, 17'10"W x 8'H / Blackout Capable

**Skylight:** One, 18'W x 15'D / Blackout Capable

**Retractable Wall to Studio 6:** 42'W x 10'8"H

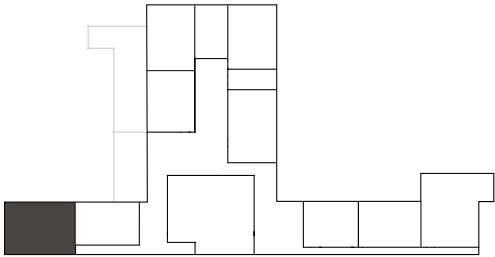
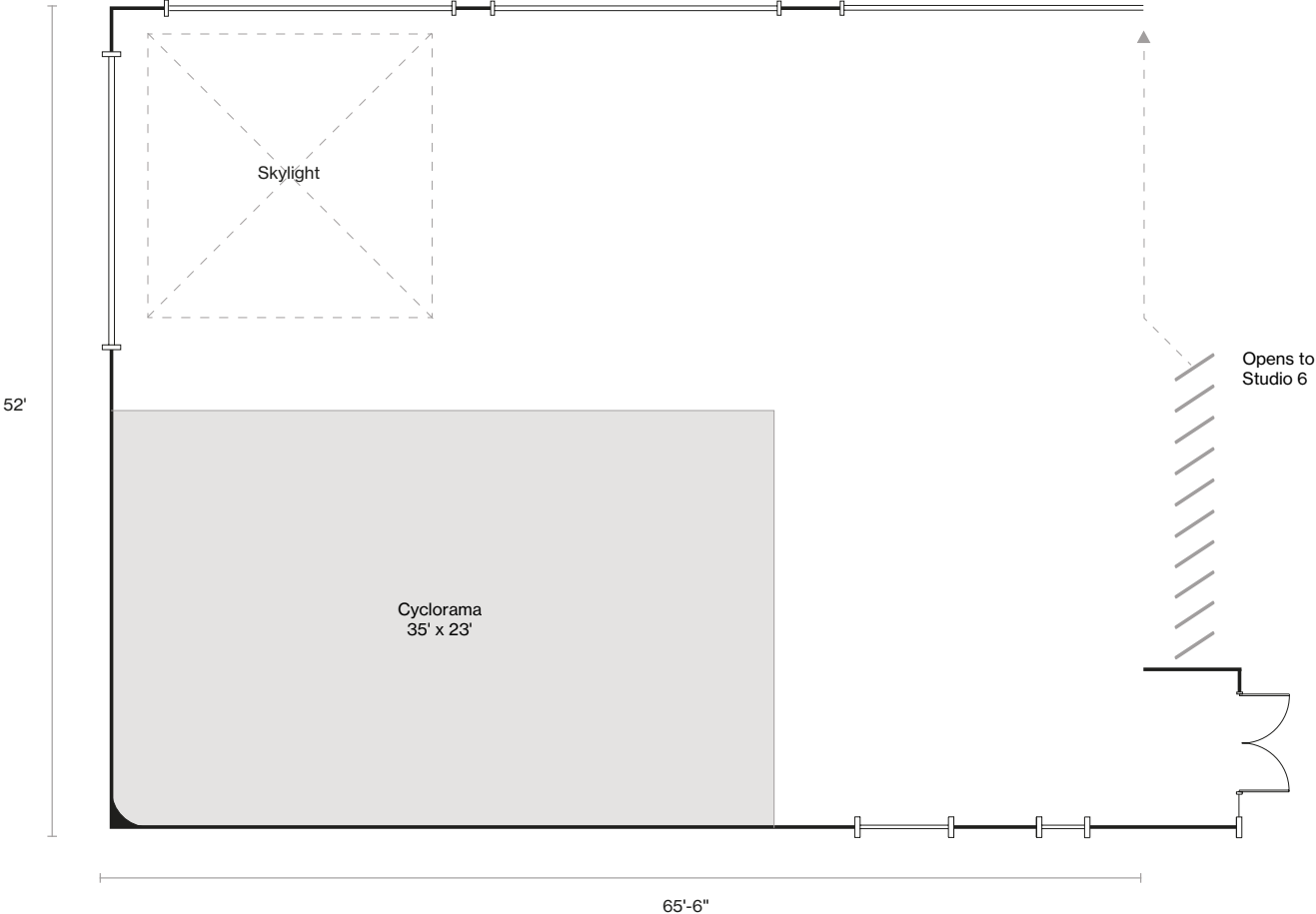
**Power:** 200 Amp 3 Phase Distributed by Camlock Service

## Contact

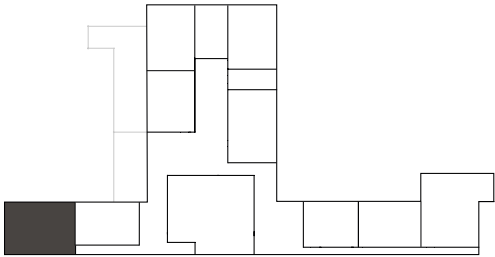
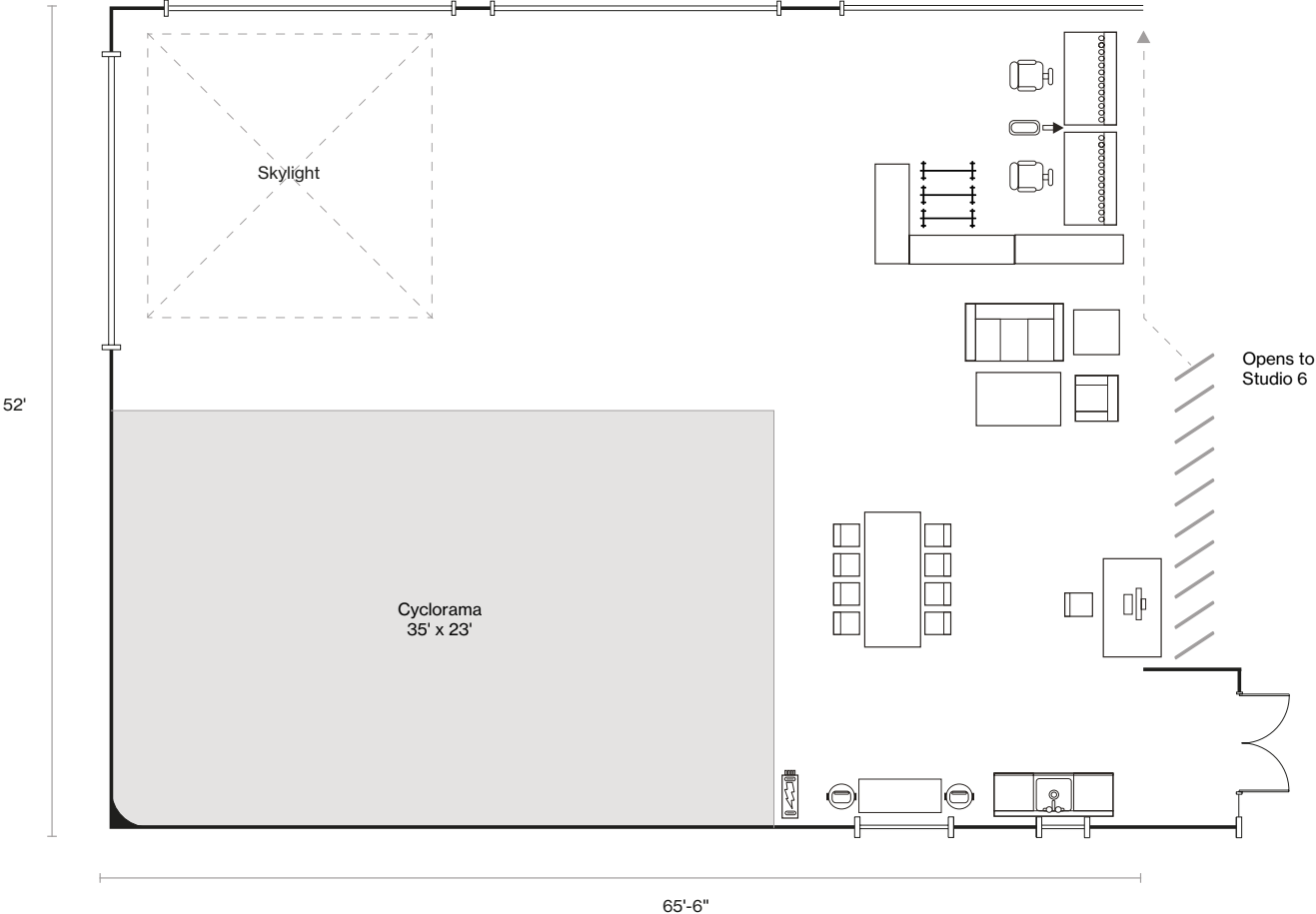
[info@pier59.com](mailto:info@pier59.com)  
212.691.5959

59 Chelsea Piers 2nd floor  
New York, New York 10011

# STUDIO 7



# STUDIO 7



PIER59 STUDIOS

# STUDIOS 6+7

## Size / Type

5900sf. / Convertable Studios

## Studio 6 Specs

**Dimensions:** 59'6"W x 42'D x 11'6"H to Beams / 15'-18' Slope of Ceiling

**Cyclorama:** One Wall, 21'W x 20'D x 16'H

**West Facing Windows:** Wall of Two, 17'10"W x 9'H and One 11'9"W x 9'H / Blackout Capable

**Skylight:** One, 18'W x 15'D / Blackout Capable

**Retractable Wall to Studio 7:** 42'W x 10'8"H

**Power:** 200 Amp 3 Phase Distributed by Camlock Service

**Salon Hair Washing Station**

## Studio 7 Specs

**Dimensions:** 65'6"W x 52'D x 11'6"H to Beams / 15'-18' Slope of Ceiling

**Cyclorama:** 2 Wall, 1 Scoop, 35'W x 23'D x 11'H

**West Facing Windows:** Wall of Three, 17'10"W x 9'H

**South Facing Window:** One, 17'10"W x 8'H / Blackout Capable

**Skylight:** One, 18'W x 15'D / Blackout Capable

**Retractable Wall to Studio 6:** 42'W x 10'8"H

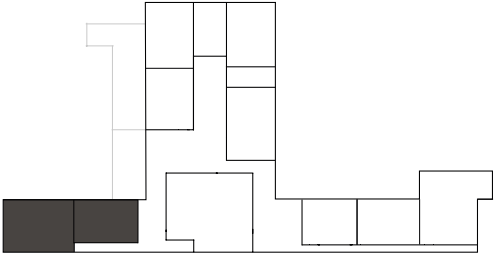
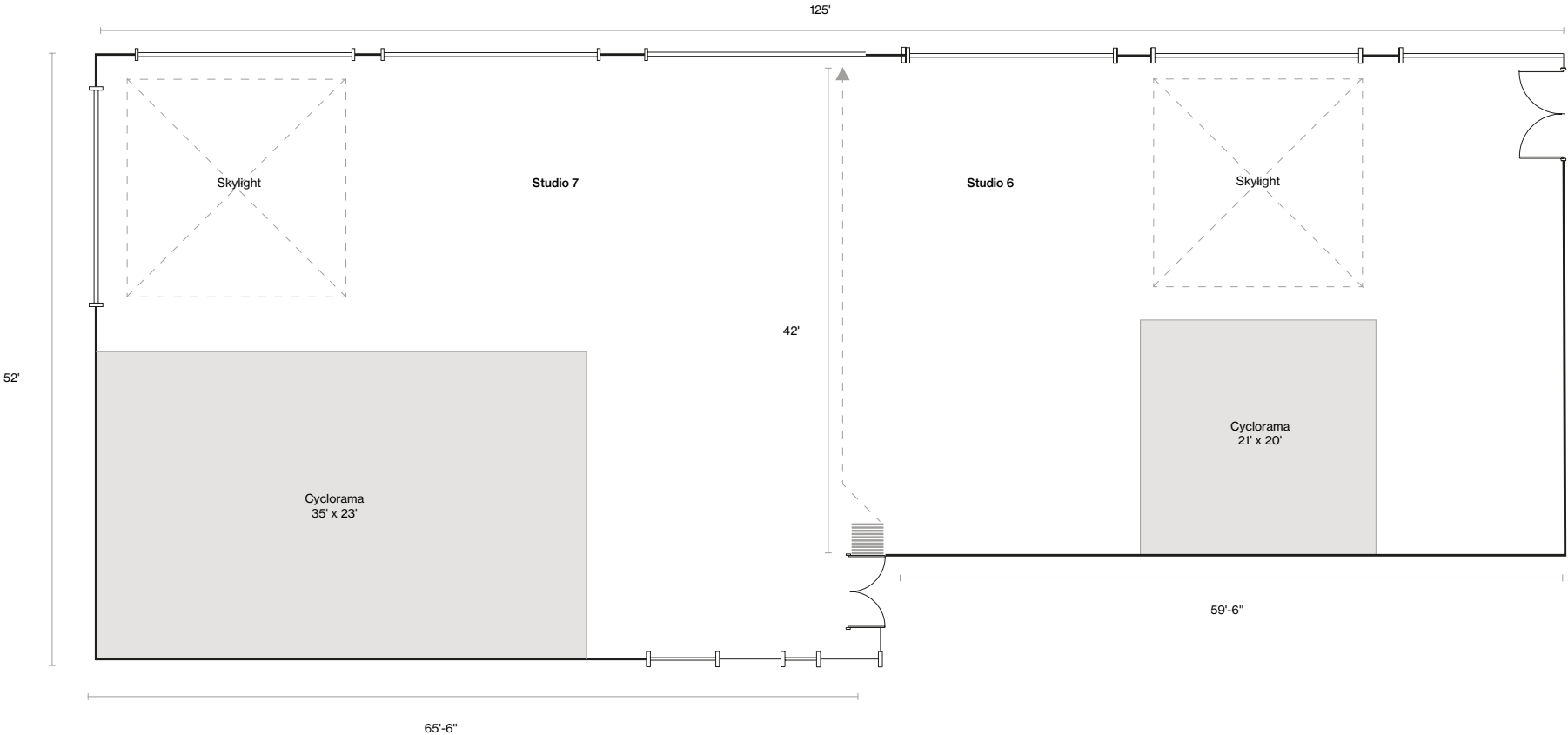
**Power:** 200 Amp 3 Phase Distributed by Camlock Service

## Contact

[info@pier59.com](mailto:info@pier59.com)  
212.691.5959

59 Chelsea Piers 2nd floor  
New York, New York 10011

# STUDIOS 6+ 7





PIER59 STUDIOS

# STUDIO 8



## Size / Type

1800sf. / Western Daylight Studio

## Specs

**Dimensions:** 42'9"W x 42'D x 11'8"H to Beams / 15'-18' Slope of Ceiling

**Cyclorama:** One Wall, 18'W x 21'6"D x 16'H

**West Facing Windows:** Wall of 2, 17'9"W x 10'H / Blackout Capable

**Retractable Wall to Studio 9 / Freight Hallway:** 42'W x 11'H

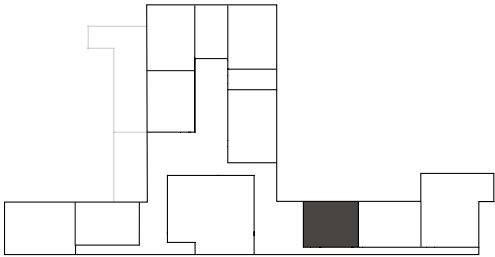
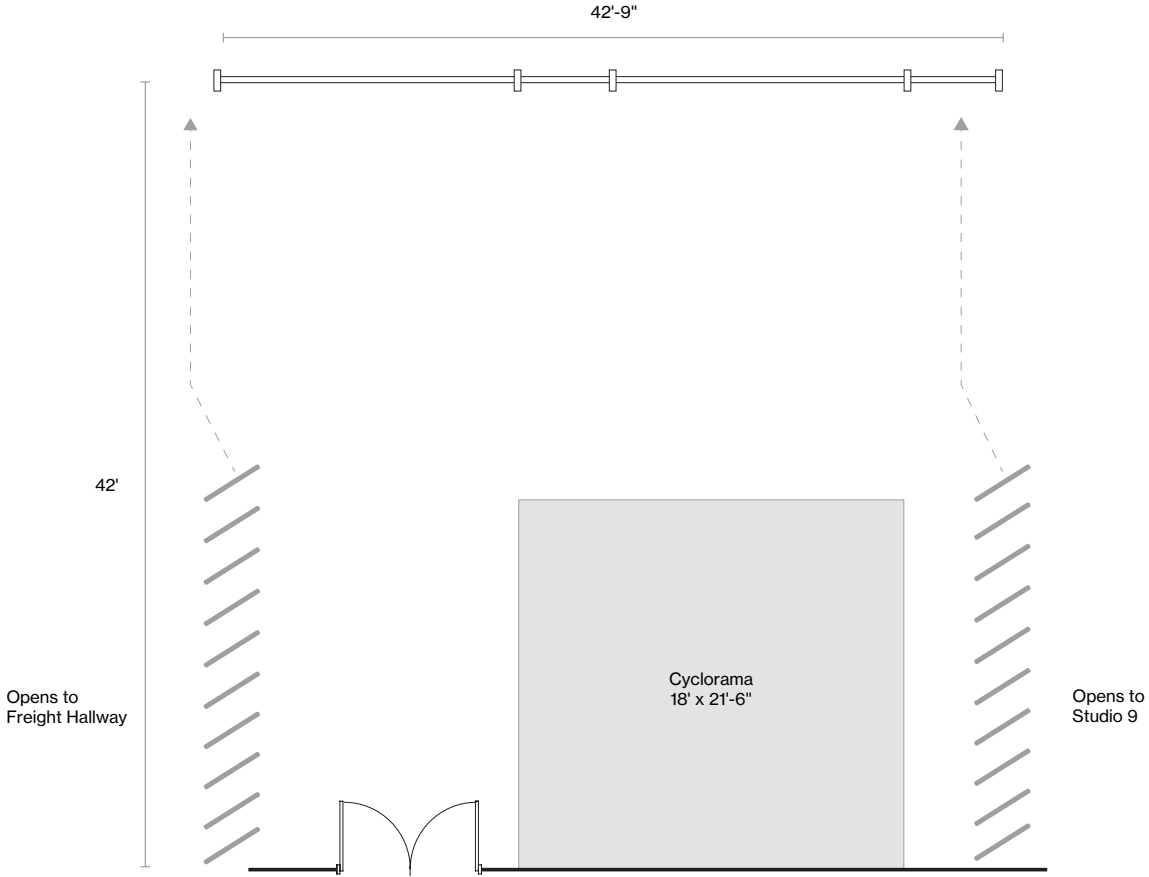
**Power:** 200 Amp 3 Phase Distributed by Camlock Service

## Contact

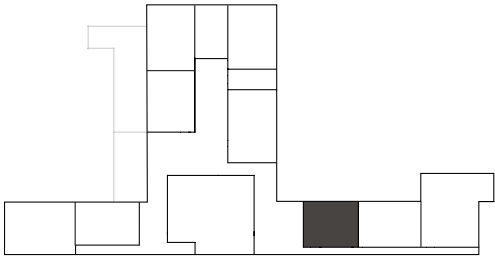
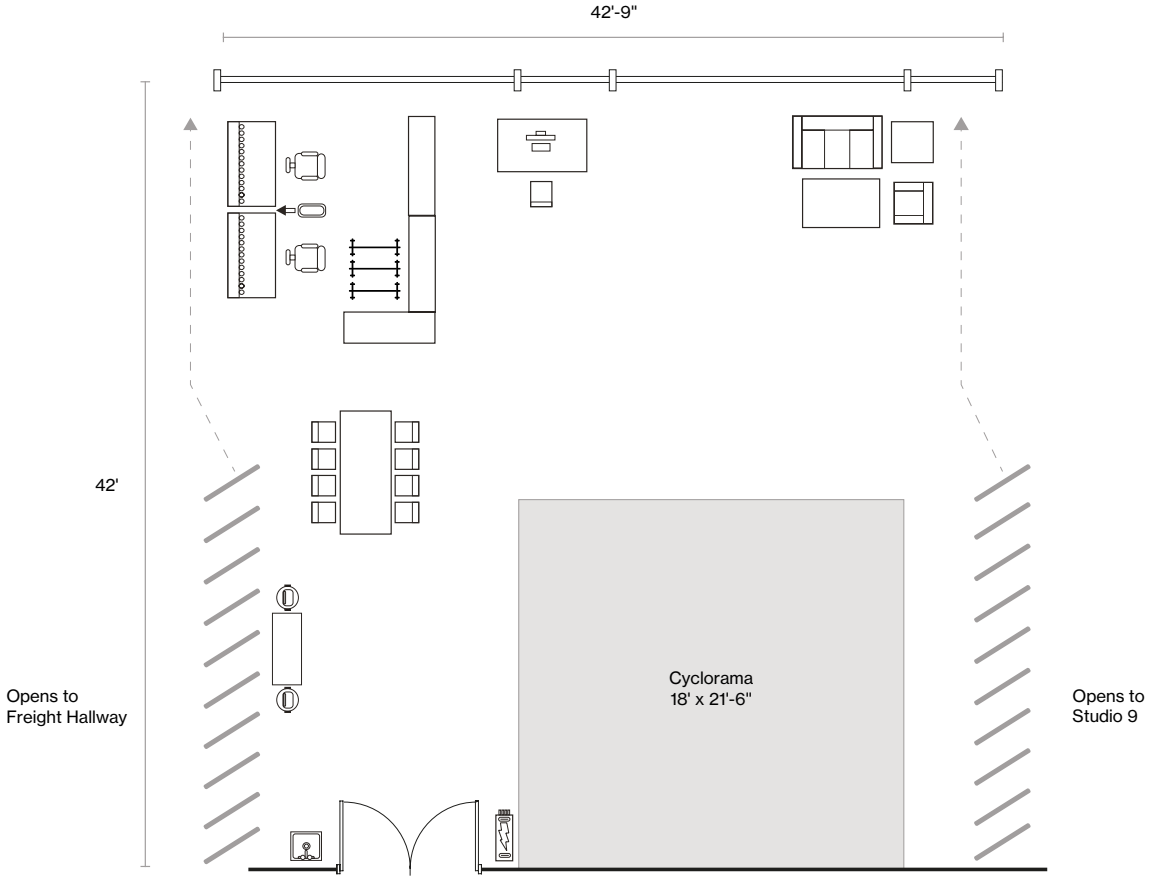
[info@pier59.com](mailto:info@pier59.com)  
212.691.5959

59 Chelsea Piers 2nd floor  
New York, New York 10011

# STUDIO 8



# STUDIO 8



PIER59 STUDIOS

# STUDIO 9



## Size / Type

2800sf. / Western Daylight Studio

## Specs

**Dimensions:** 66'9"W x 42'D x 11'8"H to Beams / 15'-18' Slope of Ceiling

**Cyclorama:** One Wall, 20'9"W x 21'6"D x 16'H

**West Facing Windows:** Wall of Three, 17'9"W x 10'H / Blackout Capable

**Retractable Wall to Studios 8 + 10:** 42'W x 11'H

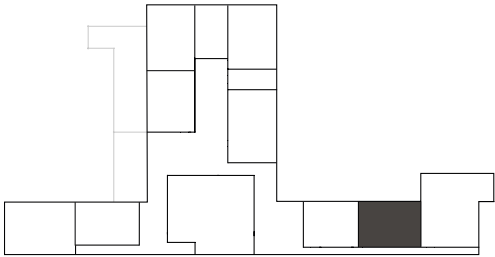
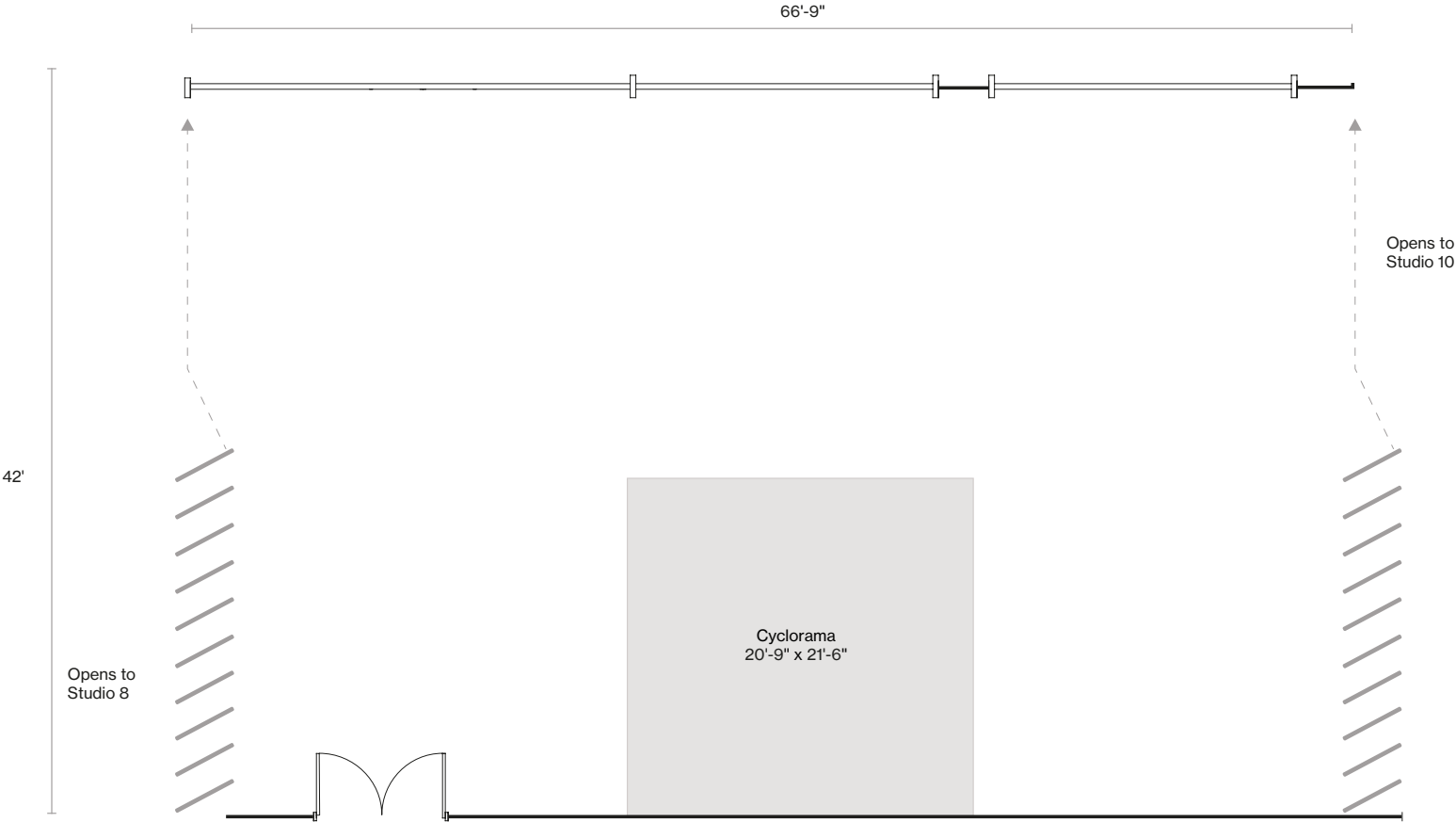
**Power:** 200 Amp 3 Phase Distributed by Camlock Service

## Contact

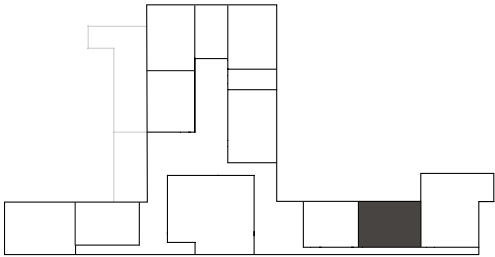
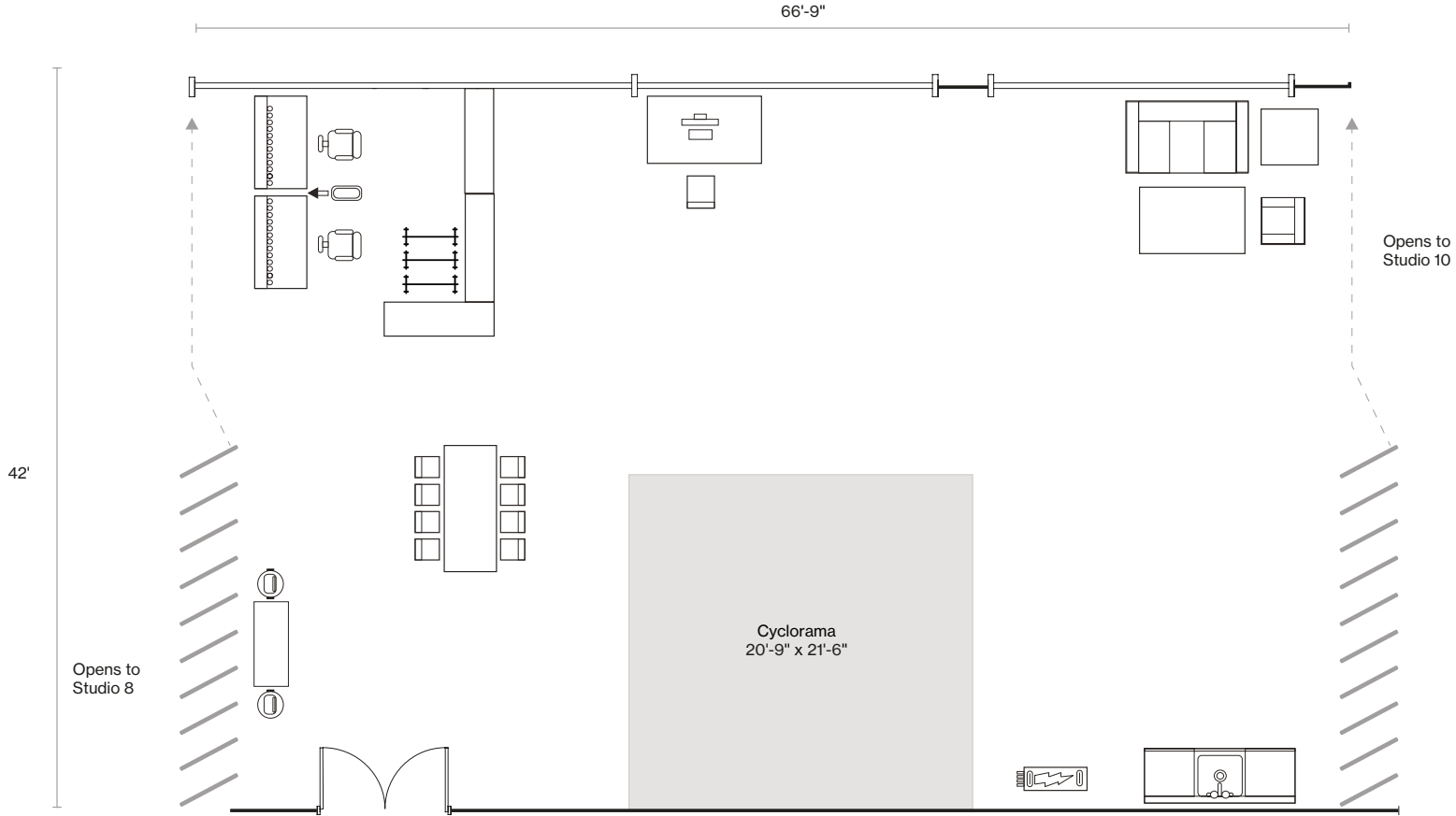
[info@pier59.com](mailto:info@pier59.com)  
212.691.5959

59 Chelsea Piers 2nd floor  
New York, New York 10011

# STUDIO 9



# STUDIO 9



PIER59 STUDIOS

# STUDIO 8+9



## Size / Type

4600sf. / Convertable Studios

## Studio 8 Specs

**Dimensions:** 42'9"W x 42'D x 11'8"H to Beams / 15'-18' Slope of Ceiling

**Cyclorama:** One Wall, 18'W x 21'6"D x 16'H

**West Facing Windows:** Wall of 2, 17'9"W x 10'H / Blackout Capable

**Retractable Wall to Studio 9 / Freight Hallway:** 42'W x 11'H

**Power:** 200 Amp 3 Phase Distributed by Camlock Service

## Studio 9 Specs

**Dimensions:** 66'9"W x 42'D x 11'8"H to Beams / 15'-18' Slope of Ceiling

**Cyclorama:** One Wall, 20'9"W x 21'6"D x 16'H

**West Facing Windows:** Wall of Three, 17'9"W x 10'H / Blackout Capable

**Retractable Wall to Studios 8 + 10:** 42'W x 11'H

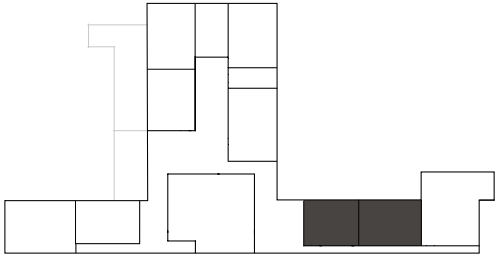
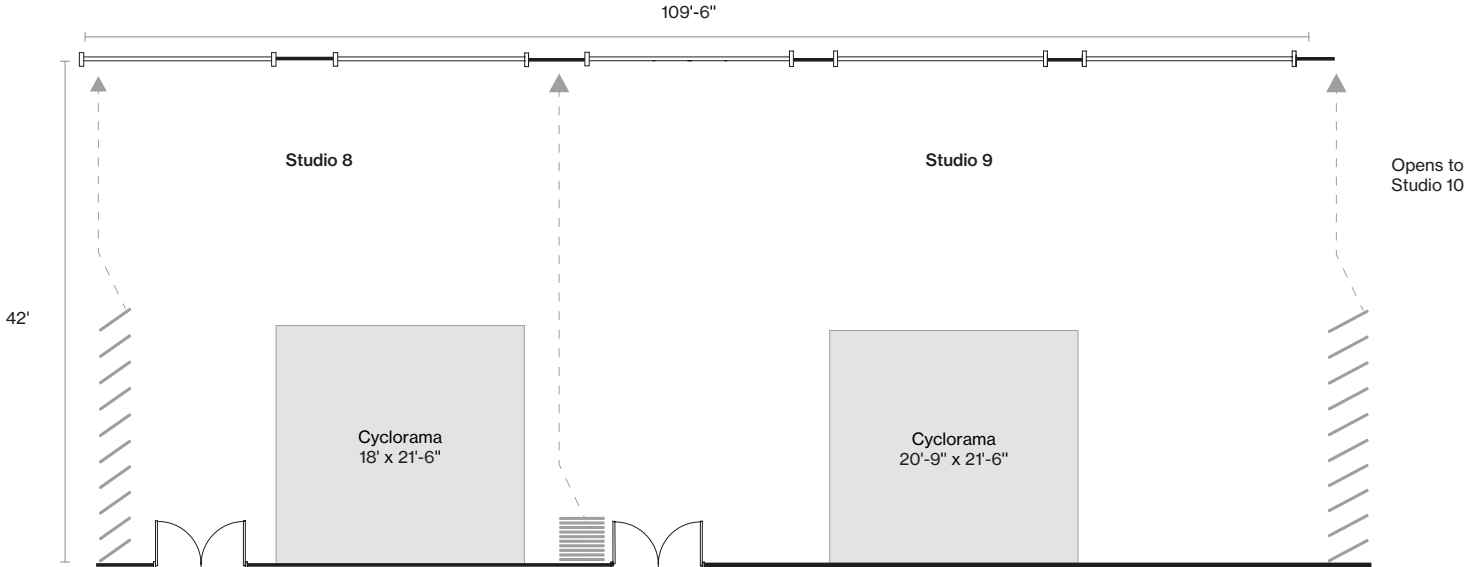
**Power:** 200 Amp 3 Phase Distributed by Camlock Service

## Contact

[info@pier59.com](mailto:info@pier59.com)  
212.691.5959

59 Chelsea Piers 2nd floor  
New York, New York 10011

# STUDIO 8+9





PIER59 STUDIOS

# STUDIO 10



## Size / Type

4150sf. / Western Daylight Studio

## Specs

**Dimensions:** 69'W x 69'D x 11'8"H to Beams / 15'-18' Slope of Ceiling

**East Cyclorama:** One Wall, 21'W x 21'6"D x 12'6"H

**West Cyclorama:** One Wall with Return, 23'W x 27'7"D x 13'H to Top of Cove

**West Facing Windows:** Wall of Three, 17'9"W x 10'H / Blackout Capable

**South Facing Window:** One, 17'9"W x 10'H / Blackout Capable

**Retractable Wall to Studio 9:** 42'W x 11'H

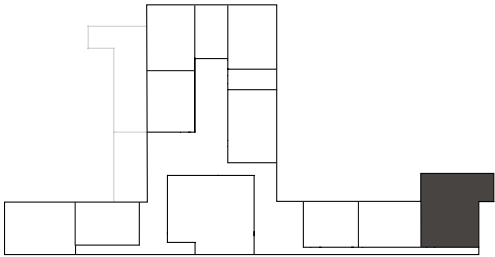
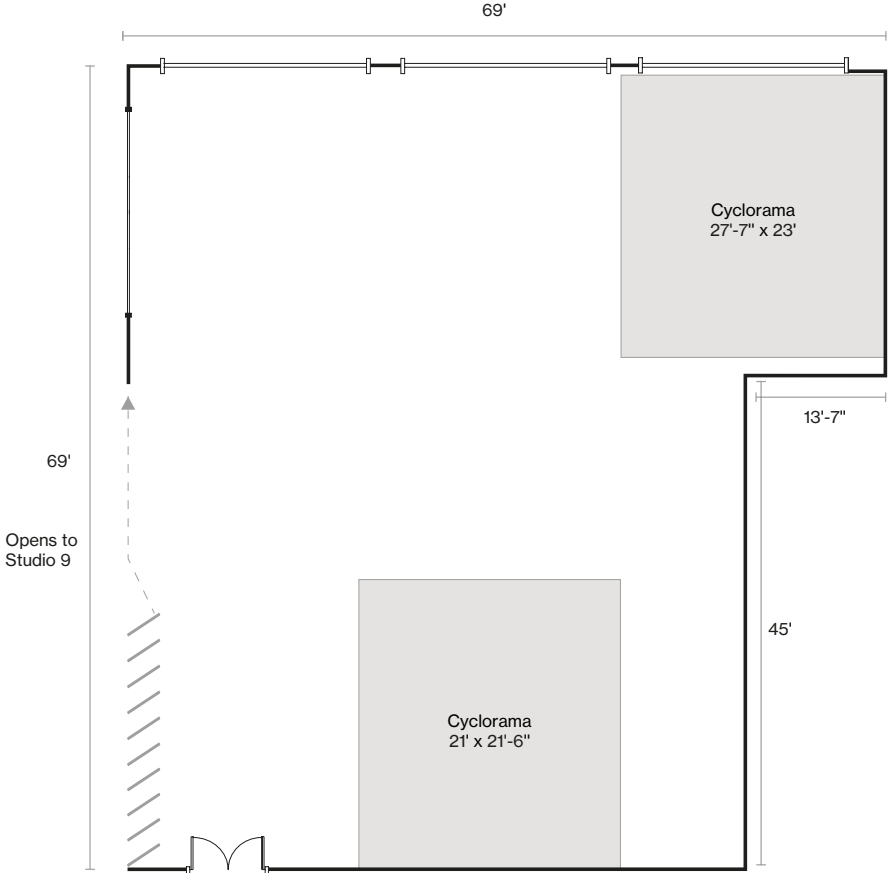
**Power:** 400 Amp 3 Phase Distributed by Two 200 Amp Camlock Services

## Contact

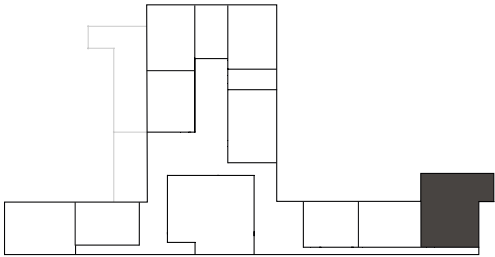
[info@pier59.com](mailto:info@pier59.com)  
212.691.5959

59 Chelsea Piers 2nd floor  
New York, New York 10011

# STUDIO 10



# STUDIO 10



# STUDIO 9+10



## Size / Type

4600sf. / Convertable Studios

## Studio 9 Specs

**Dimensions:** 66'9"W x 42'D x 11'8"H to Beams / 15'-18' Slope of Ceiling

**Cyclorama:** One Wall, 20'9"W x 21'6"D x 16'H

**West Facing Windows:** Wall of Three, 17'9"W x 10'H / Blackout Capable

**Retractable Wall to Studios 8 + 10:** 42'W x 11'H

**Power:** 200 Amp 3 Phase Distributed by Camlock Service

## Studio 10 Specs

**Dimensions:** 69'W x 69'D x 11'8"H to Beams / 15'-18' Slope of Ceiling

**East Cyclorama:** One Wall, 21'W x 21'6"D x 12'6"H

**West Cyclorama:** One Wall with Return, 23'W x 27'7"D x 13'H to Top of Cove

**West Facing Windows:** Wall of Three, 17'9"W x 10'H / Blackout Capable

**South Facing Window:** One, 17'9"W x 10'H / Blackout Capable

**Retractable Wall to Studio 9:** 42'W x 11'H

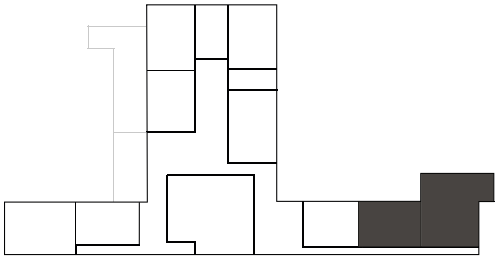
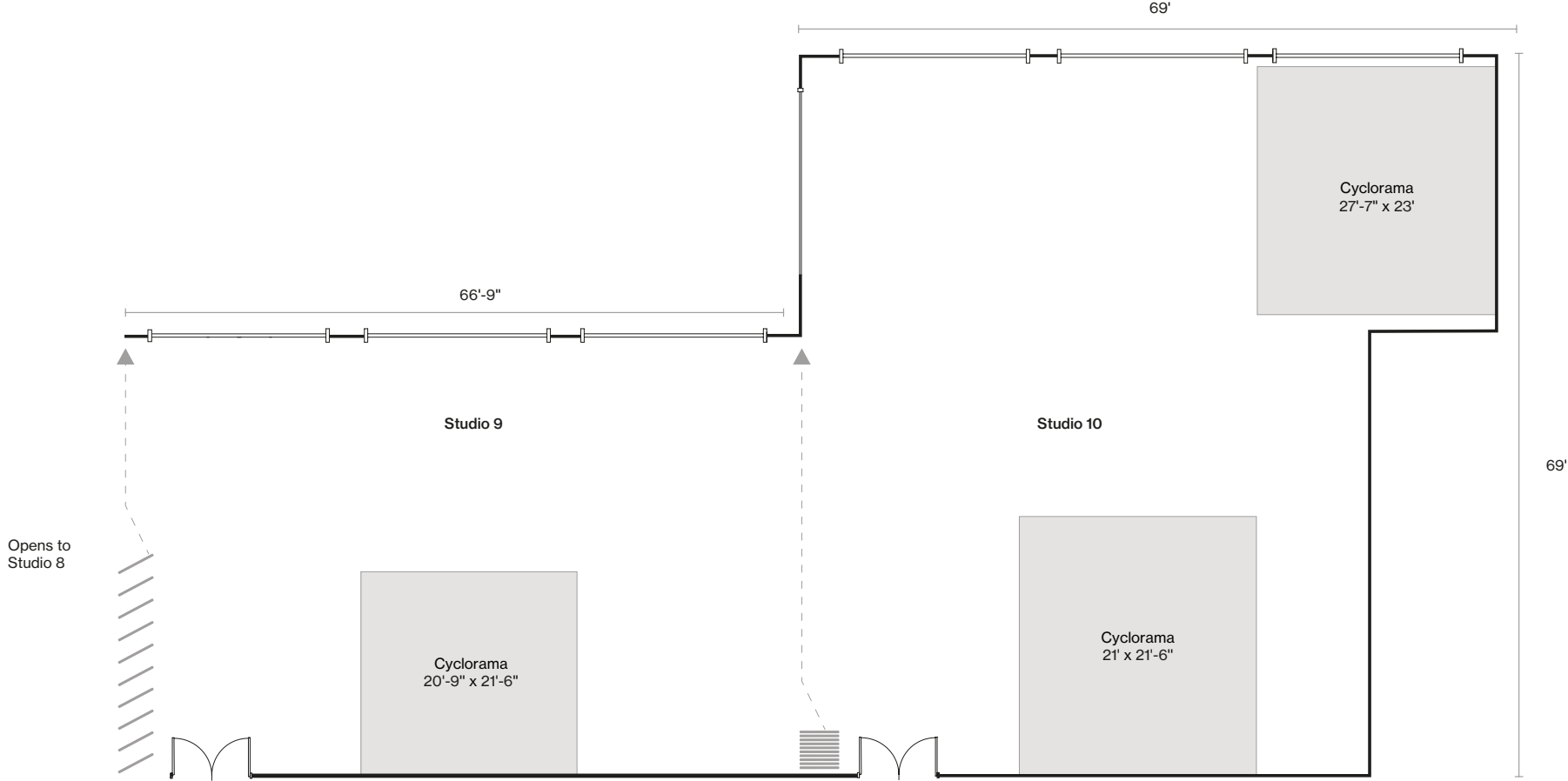
**Power:** 400 Amp 3 Phase Distributed by Two 200 Amp Camlock Services

## Contact

[info@pier59.com](mailto:info@pier59.com)  
212.691.5959

59 Chelsea Piers 2nd floor  
New York, New York 10011

# STUDIO 9+10



PIER59 STUDIOS

# STUDIO 8+9+10



## Size / Type

8750sf. / Convertable Studios

## Contact

info@pier59.com  
212.691.5959

59 Chelsea Piers 2nd floor  
New York, New York 10011

## Studio 9 Specs

**Dimensions:** 66'9"W x 42'D x 11'8"H to Beams / 15'-18' Slope of Ceiling

**Cyclorama:** One Wall, 20'9"W x 21'6"D x 16'H

**West Facing Windows:** Wall of Three, 17'9"W x 10'H / Blackout Capable

**Retractable Wall to Studios 8 + 10:** 42'W x 11'H

**Power:** 200 Amp 3 Phase Distributed by Camlock Service

## Studio 8 Specs

**Dimensions:** 42'9"W x 42'D x 11'8"H to Beams / 15'-18' Slope of Ceiling

**Cyclorama:** One Wall, 18'W x 21'6"D x 16'H

**West Facing Windows:** Wall of 2, 17'9"W x 10'H / Blackout Capable

**Retractable Wall to Studio 9 / Freight Hallway:** 42'W x 11'H

**Power:** 200 Amp 3 Phase Distributed by Camlock Service

## Studio 10 Specs

**Dimensions:** 69'W x 69'D x 11'8"H to Beams / 15'-18' Slope of Ceiling

**East Cyclorama:** One Wall, 21'W x 21'6"D x 12'6"H

**West Cyclorama:** One Wall with Return, 23'W x 27'7"D x 13'H to Top of Cove

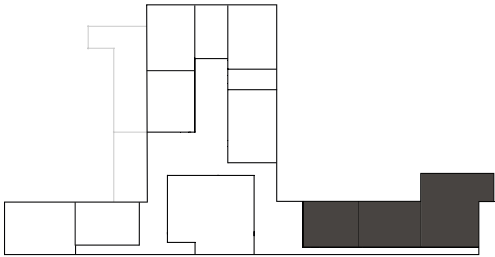
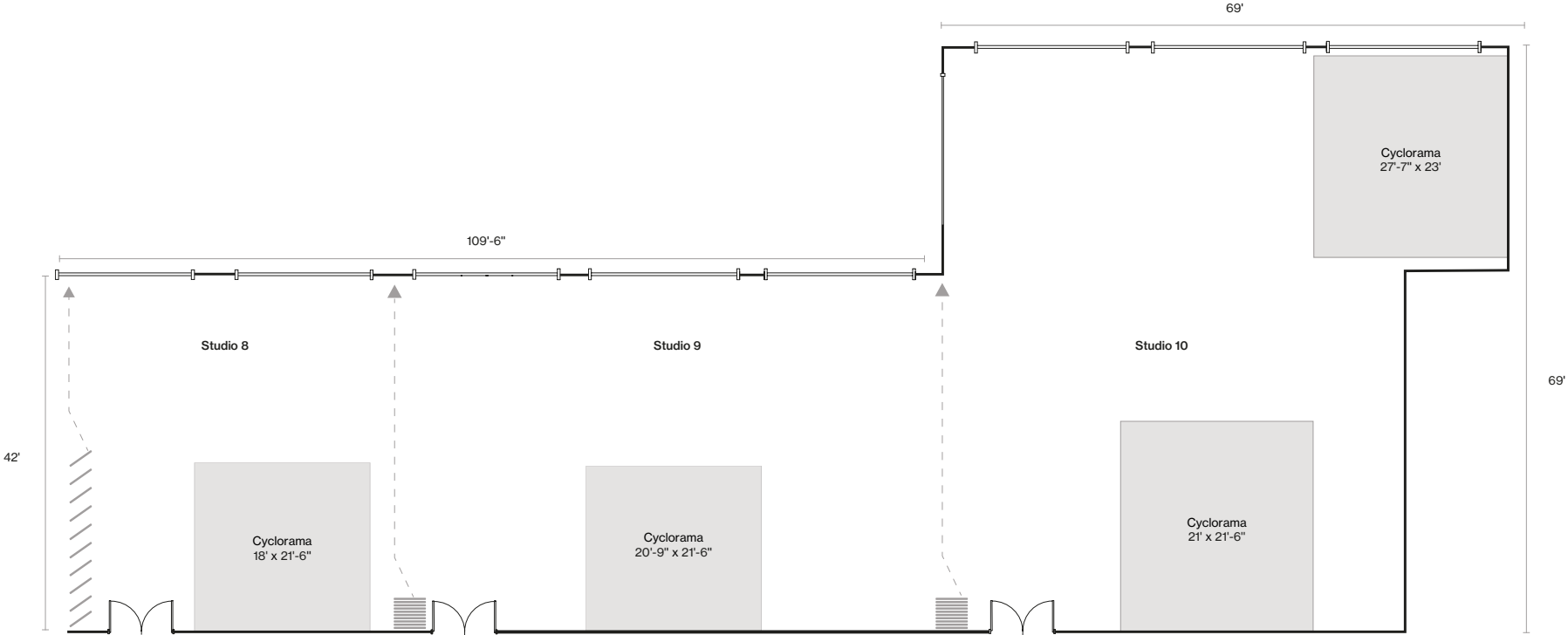
**West Facing Windows:** Wall of Three, 17'9"W x 10'H / Blackout Capable

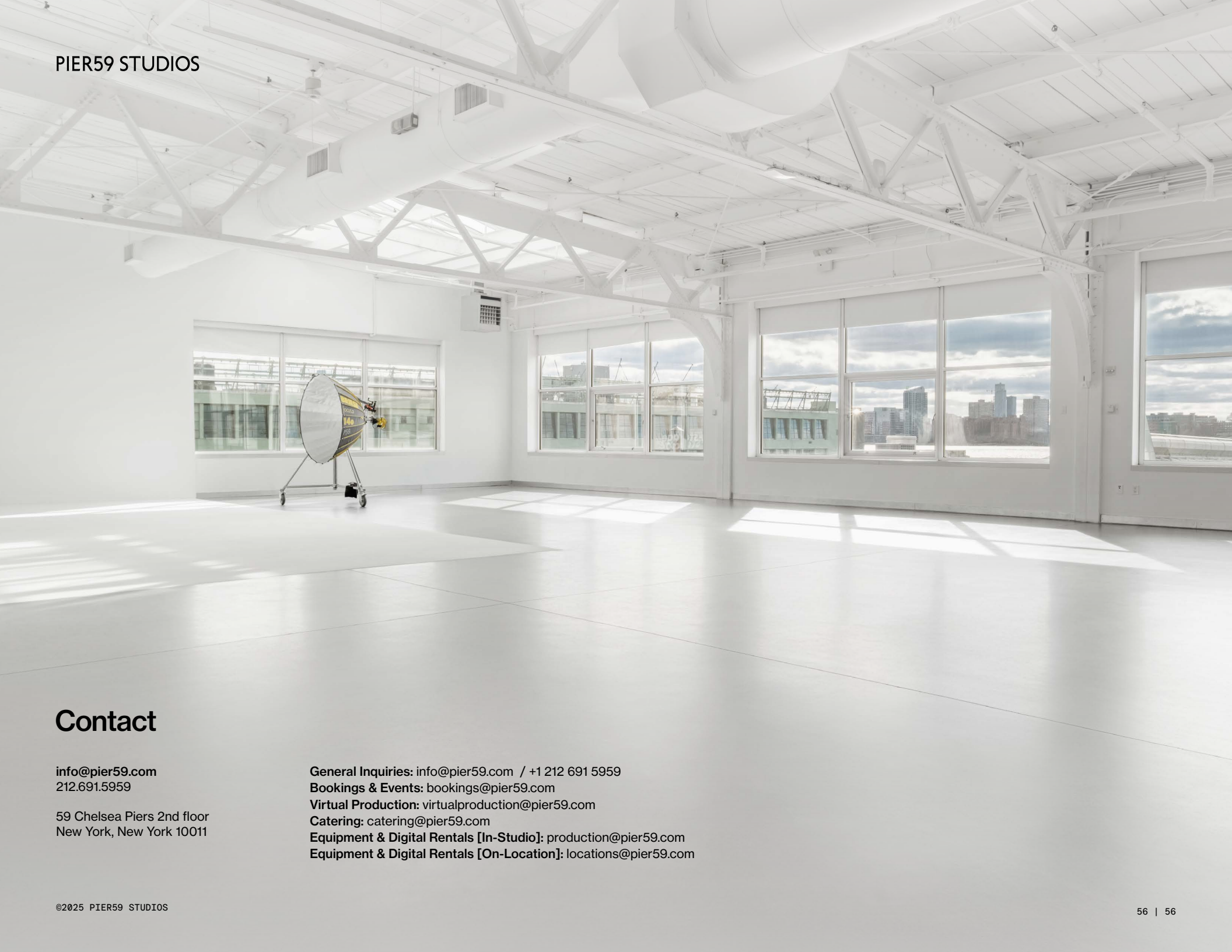
**South Facing Window:** One, 17'9"W x 10'H / Blackout Capable

**Retractable Wall to Studio 9:** 42'W x 11'H

**Power:** 400 Amp 3 Phase Distributed by Two 200 Amp Camlock Services

# STUDIO 8+9+10





## Contact

[info@pier59.com](mailto:info@pier59.com)  
212.691.5959

59 Chelsea Piers 2nd floor  
New York, New York 10011

**General Inquiries:** [info@pier59.com](mailto:info@pier59.com) / +1 212 691 5959

**Bookings & Events:** [bookings@pier59.com](mailto:bookings@pier59.com)

**Virtual Production:** [virtualproduction@pier59.com](mailto:virtualproduction@pier59.com)

**Catering:** [catering@pier59.com](mailto:catering@pier59.com)

**Equipment & Digital Rentals [In-Studio]:** [production@pier59.com](mailto:production@pier59.com)

**Equipment & Digital Rentals [On-Location]:** [locations@pier59.com](mailto:locations@pier59.com)