

PIER59 STUDIOS

STAGE C



Size / Type

6500sf. / Dark Studio

Specs

Dimensions: 78'W x 85'D x 31.5'H to Beams / 45' to the Ceiling / 20'H to the Grid Over the Cyc

Cyclorama: Two Wall, One Corner
49'W x 26'6"D x 20'H Back Wall x 14'6"H
Wall on Right

Stage Door To: Freight Area 9'10"W x 10'6"H
/ Reception Area 13'4"W x 14'6"H

Power: 600 Amps 3 Phase Distributed by
One 200 Amp & One 400 Amp 3 Phase
Camlocks

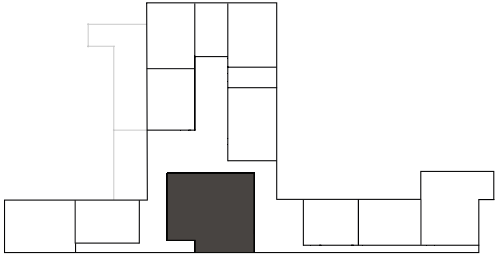
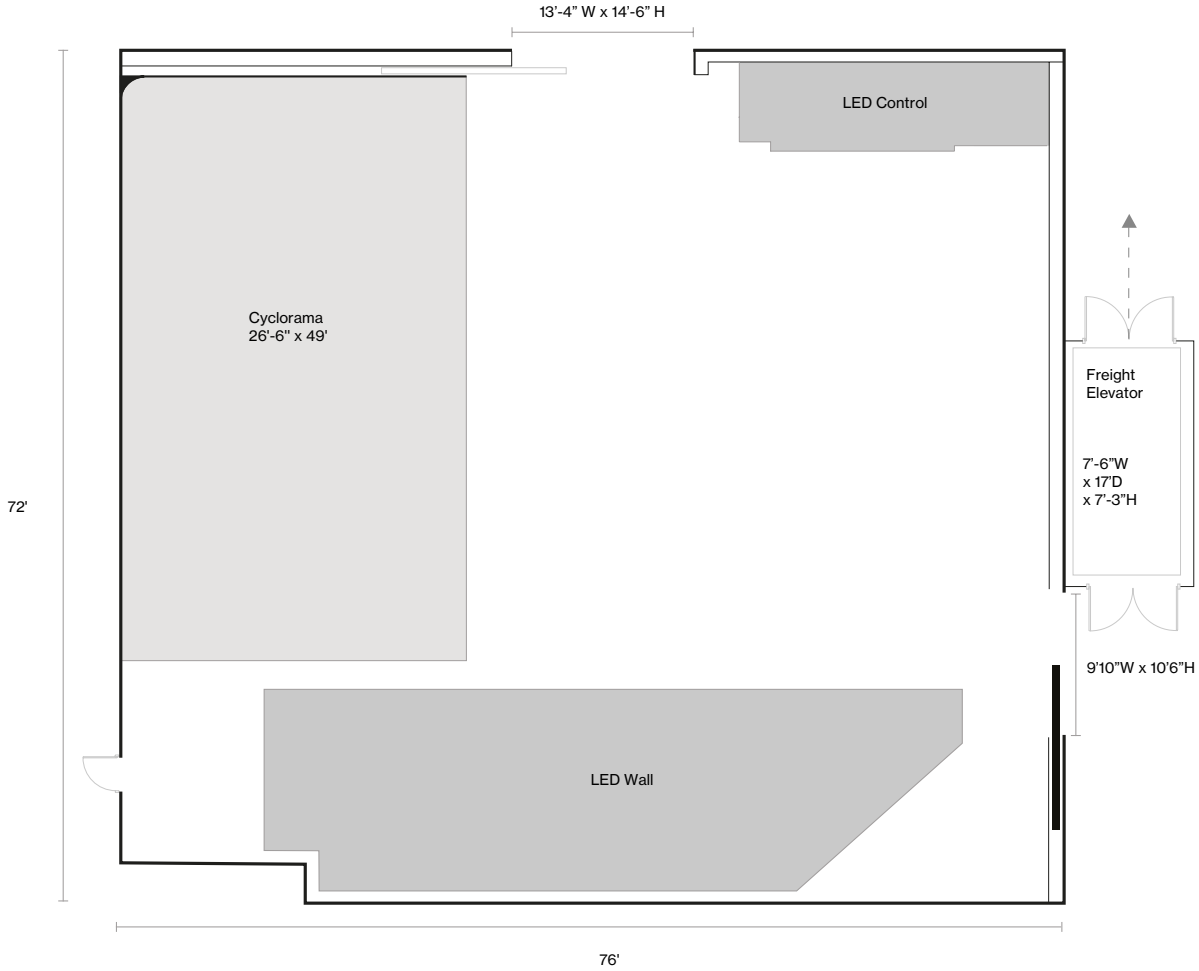
Vehicle Accessible

Contact

info@pier59.com
212.691.5959

59 Chelsea Piers 2nd floor
New York, New York 10011

STAGE C



STAGE C

