

Specifications + Floor Plans

FAQ + Terms

Options

Pier59 Studios allocates “first” and “second” options based on our availabilities. Clients allotted a first option have the first right of refusal to the space and can confirm at will. If there is a pre-existing first option on the dates requested, a second option will be issued. If a first option hold releases, the first will be reallocated to a client holding a successive second option.

Challenges

In the event a client holding second option would like to confirm and contract a space prior to a first option becoming available, they may place a challenge in effort to do so. Once challenged, the client holding first option has 24 business hours to either confirm the studio or release their hold to the challenger. If the challenged space is released, the challenger is immediately confirmed and contracted in the studio space. Placing a challenge is considered a binding agreement, and cancellation fees are applicable if the challenger does not wish to proceed with the booking at any time following the challenge's placement assuming the challenge is won.

Cancellations

Cancellation fees are applicable to a dropped studio booking at any point following written receipt of a studio confirmation or challenge (if applicable). In the event we are unable to rebook the cancelled studio(s), the cancellation fee is equivalent to the full, undiscounted studio rate. If we are successful in rebooking the applicable spaces, cancellation fees are waived.

Payment

Pier59 Studios requires advance payment on the studio rate and your equipment order. Any expenses incurred over and above the advanced fees are invoiced on Net 30 Terms.

Equipment

We have an extensive range of equipment and require that all grip and electric rentals come through Pier59 Studios when shooting on site.

Call Times

We require receipt of your finalized call time no later than 8:00 pm the evening prior your arrival. If a call time is not received by 8:00 pm the evening prior, your call time will be set to 8:00 am.

Insurance

A valid Certificate of Insurance (COI) meeting our minimum coverages and proof of a valid worker's compensation policy are required when working at Pier59 Studios.

EQ Advances

Cancellation fees are applicable to a dropped studio booking at any point following written receipt of a studio confirmation or challenge (if applicable). In the event we are unable to rebook the cancelled studio(s), the cancellation fee is equivalent to the full, undiscounted studio rate. If we are successful in rebooking the applicable spaces, cancellation fees are waived.

Day Length

Unless otherwise agreed in writing, our stills and editorial rates are based on 10-hour days between the hours of 7:00 am and 8:00 pm. Motion rates are based on a 12-hour day between the hours of 7:00 am and 10:00 pm. Overtime (OT) charges are applicable to occupancy beyond the contracted day length, or outside of the time frames outlined above.

Catering

Pier59 Studios offers top-tier in-house catering solutions for your convenience. We've also partnered with several industry leading caterers to allow our clients a depth and diversity of menus to choose from. Please note that outside catering fees apply should you elect to utilize an unassociated vendor for food and beverage services on set.

Additional Details

Freight Elevator

- 7'6"W x 17'D x 7'3"H
- 10,000 lb. Weight Capacity

Amenities

- Hair & Makeup Stations
- Stylist Needs
- Furnished Client Area
- Mac Computers
- Bluetooth Audio Connection
- Wireless Internet Access
- Private Bathrooms & Showers Available
- In-House Catering & Private Chef Available
- Each Studio Equipped with Sink

Overtime Rates

10-Hour Day: Stills

12-Hour Day: Motion

- 7:00 AM - 8:00 PM: \$200/Hour
- 8:00 PM - 12:00 AM: \$300/Hour
- 2:00 AM - 3:00 AM: \$400/Hour
- 3:00 AM - 7:00 AM: \$500/Hour
- Per Additionally Booked Studio: \$100/Hour

PIER59 STUDIOS



Studios Complex

PIER59 STUDIOS

COMPLEX



Virtual Production Stages



PIER59 STUDIOS

STAGE C VIRTUAL PRODUCTION



Size / Type

6500sf. / Dark Studio

Specs

Dimensions: 78'W x 85'D x 31.5'H to Beams
/ 45' to the Ceiling / 20'H to the Grid Over
the Cyc

Cyclorama: Two Wall, One Corner
49'W x 26'6"D x 20'H Back Wall x 14'6"H
Wall on Right

Stage Door To: Freight Area 9'10"W x 10'6"H
/ Reception Area 13'4"W x 14'6"H

Power: 600 Amps 3 Phase Distributed by
One 200 Amp & One 400 Amp 3 Phase
Camlocks

Vehicle Accessible

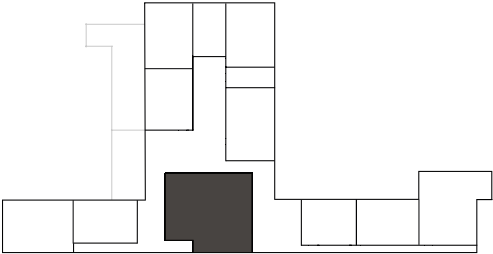
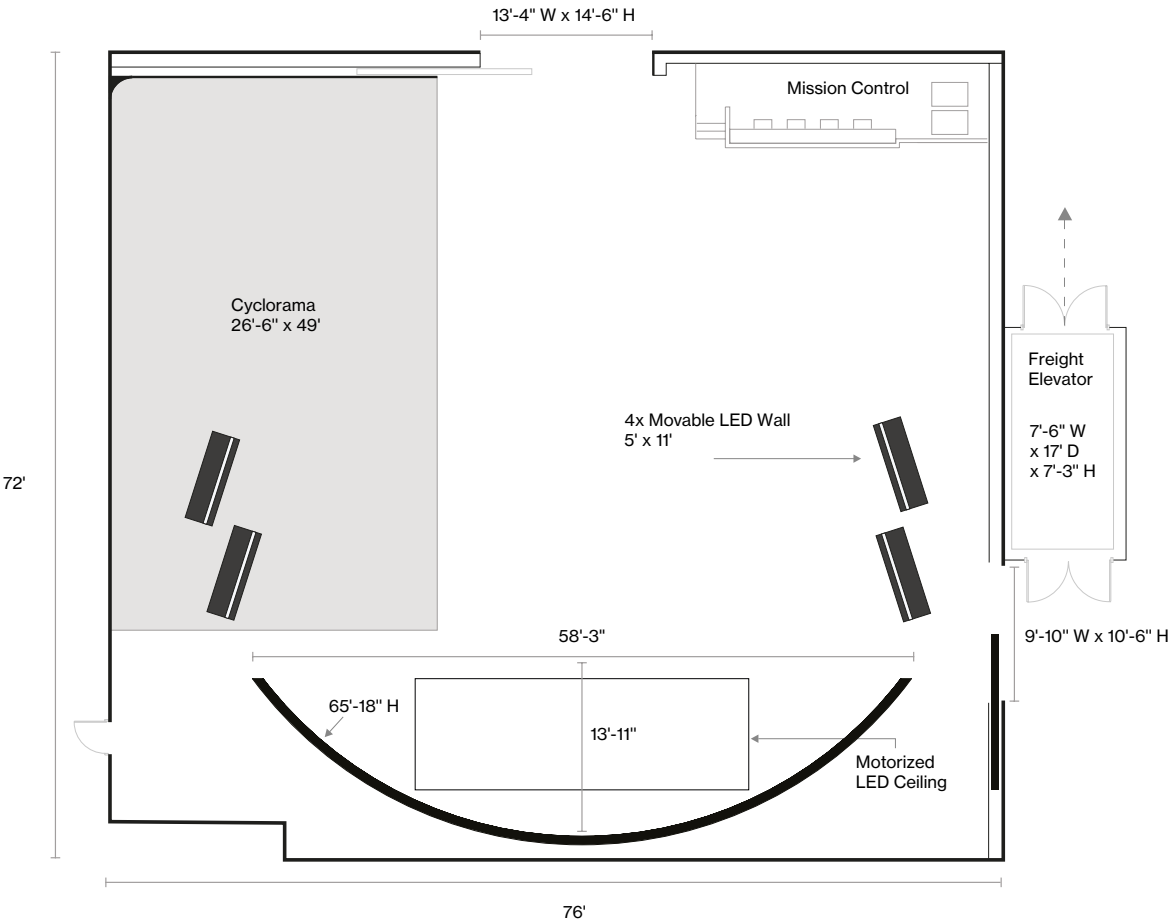
Contact

info@pier59.com
212.691.5959

59 Chelsea Piers 2nd floor
New York, New York 10011

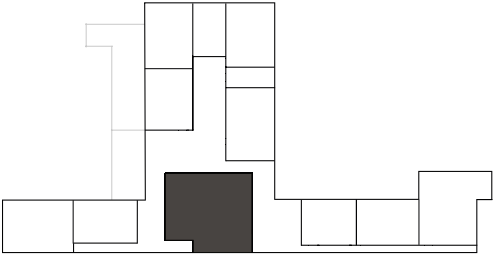
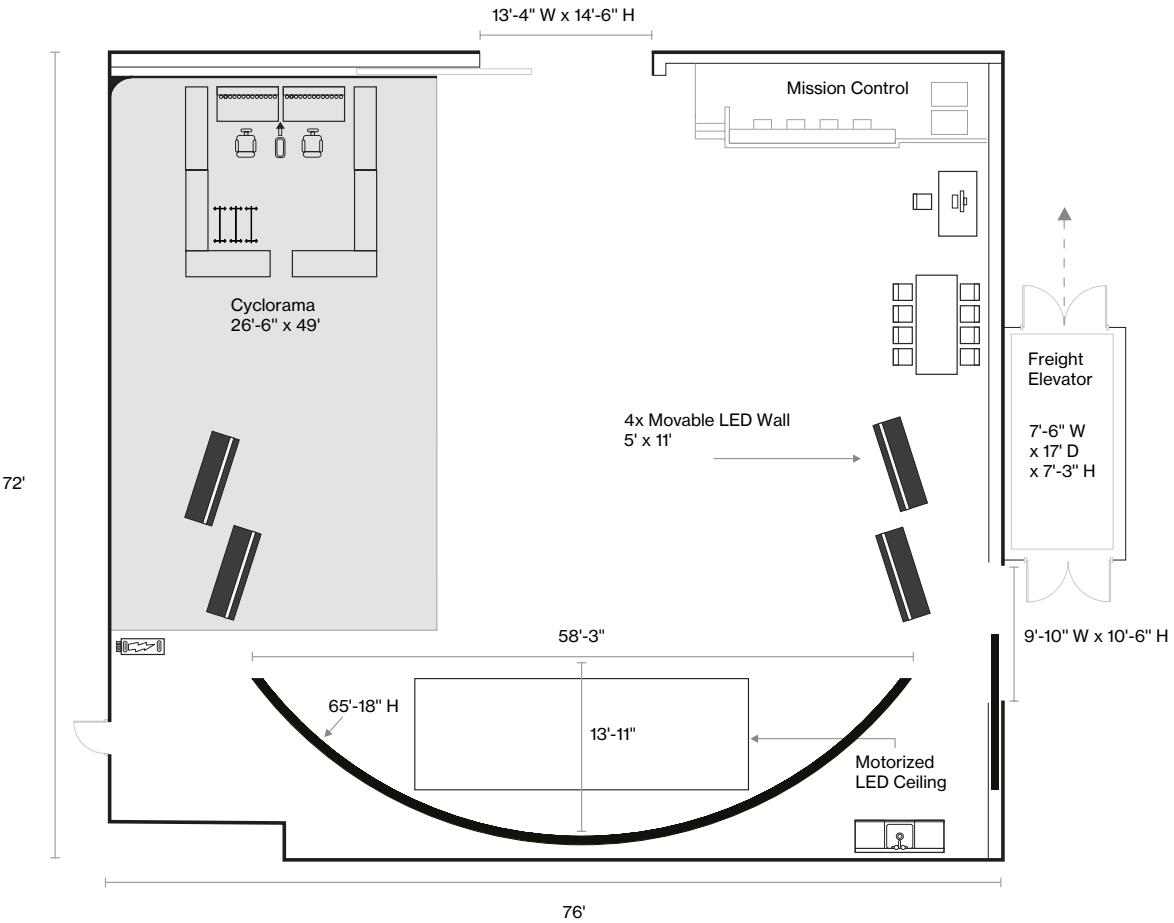
STAGE C

VIRTUAL PRODUCTION



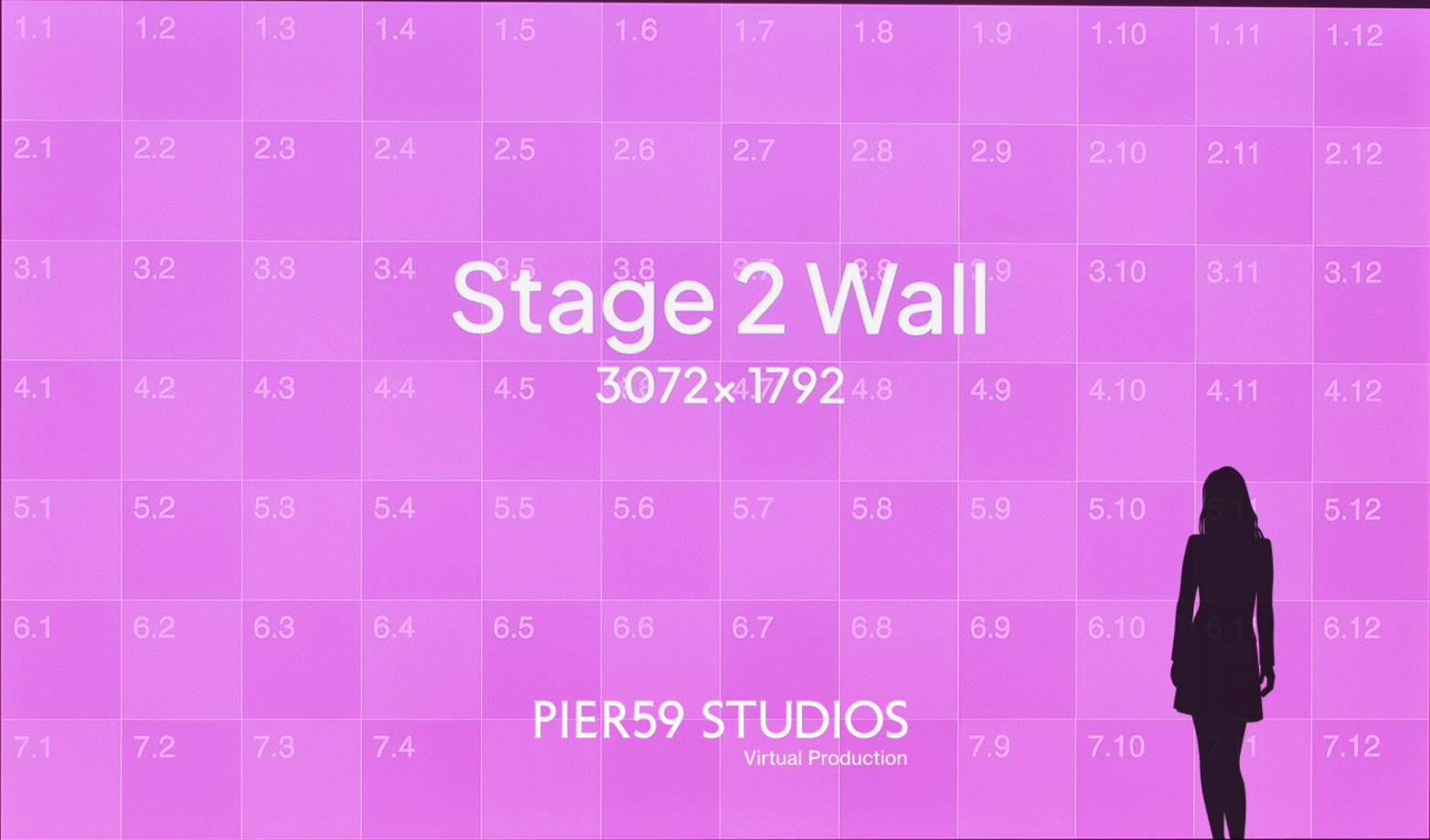
STAGE C

VIRTUAL PRODUCTION



PIER59 STUDIOS

STAGE 2



Size / Type

2800sf. / Semi-Daylight Studio

Specs

Dimensions: 44'W x 63'7"D x 16'H to Beams / 19'-31' Slope of Ceiling

Cyclorama: 3 Wall, 2 Corner, 42'W x 24'D x 16'H to Beams

North Facing Window: One, 17'9"W x 11'H / Blackout Capable

Power: 200 Amp 3 Phase Distributed by Camlock Service

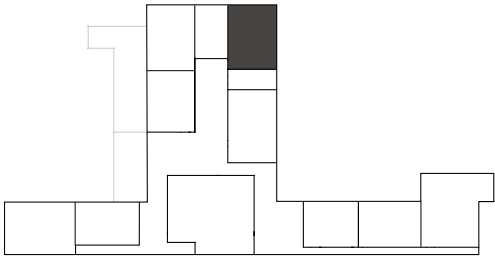
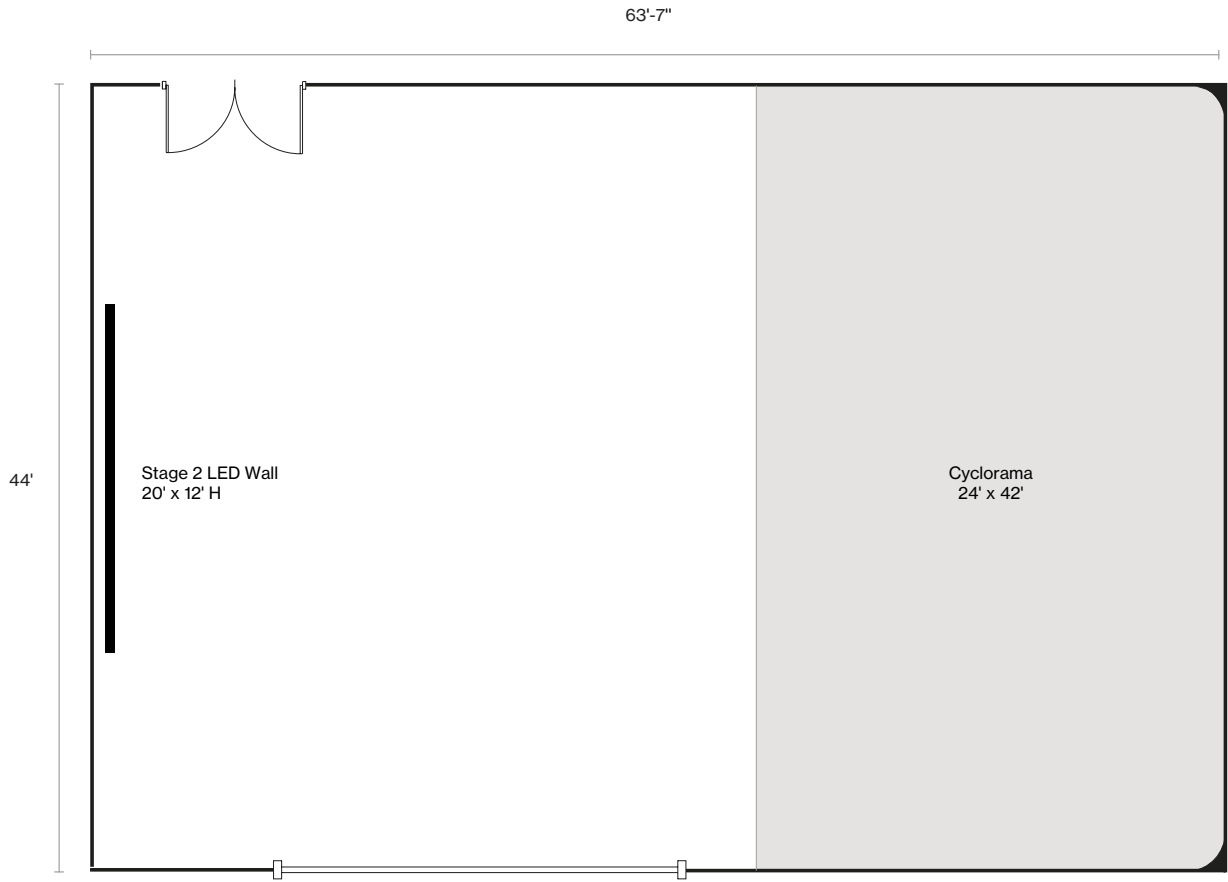
Contact

info@pier59.com
212.691.5959

59 Chelsea Piers 2nd floor
New York, New York 10011

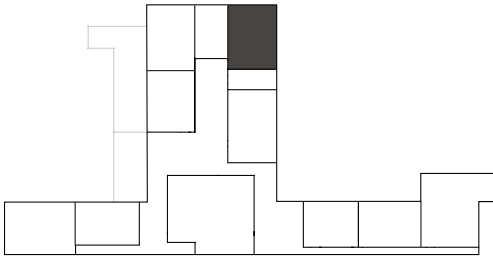
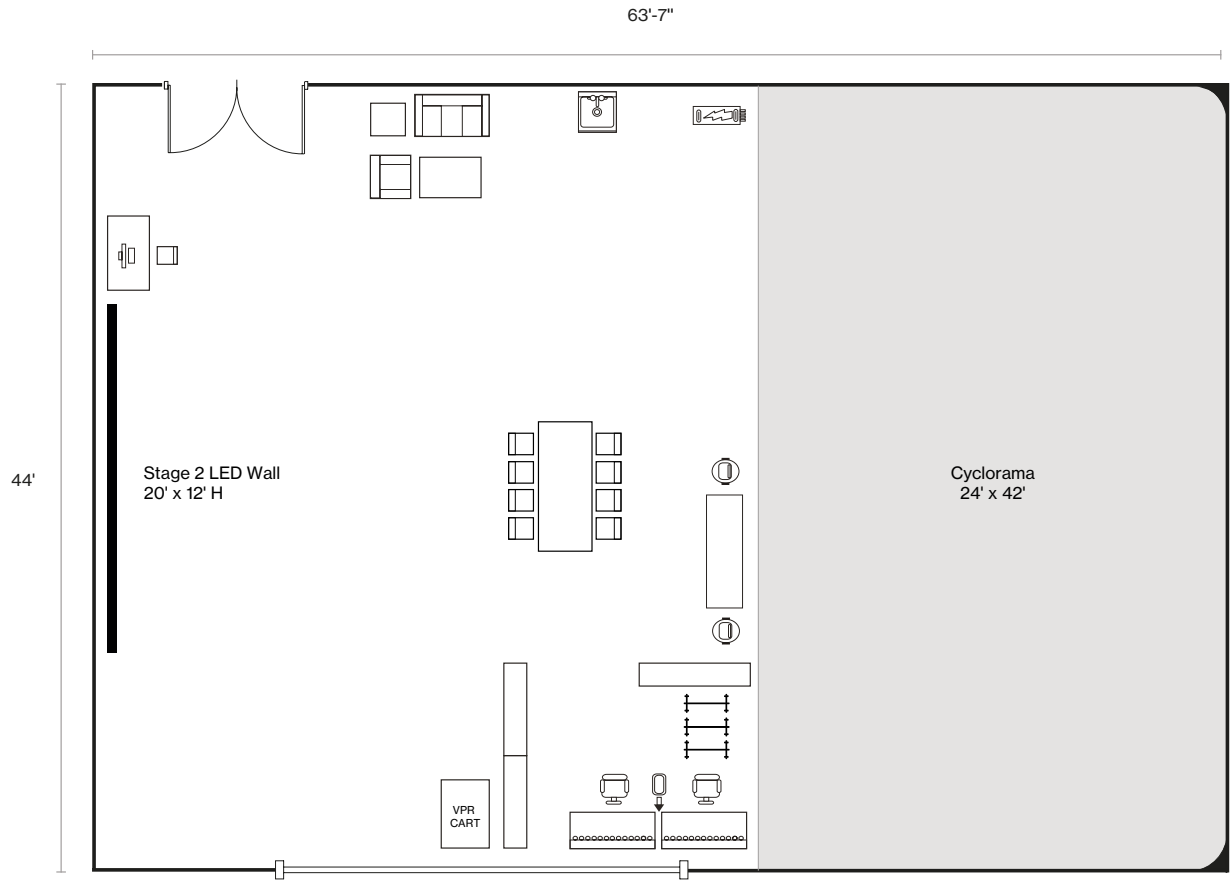
PIER59 STUDIOS

STAGE 2



PIER59 STUDIOS

STAGE 2



PIER59 STUDIOS



Still + Motion Studios

PIER59 STUDIOS STAGE C



Size / Type

6500sf. / Dark Studio

Specs

Dimensions: 78'W x 85'D x 31.5'H to Beams
/ 45' to the Ceiling / 20'H to the Grid Over
the Cyc

Cyclorama: Two Wall, One Corner
49'W x 26'6"D x 20'H Back Wall x 14'6"H
Wall on Right

Stage Door To: Freight Area 9'10"W x 10'6"H
/ Reception Area 13'4"W x 14'6"H

Power: 600 Amps 3 Phase Distributed by
One 200 Amp & One 400 Amp 3 Phase
Camlocks

Vehicle Accessible

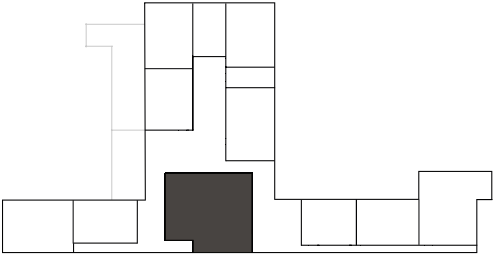
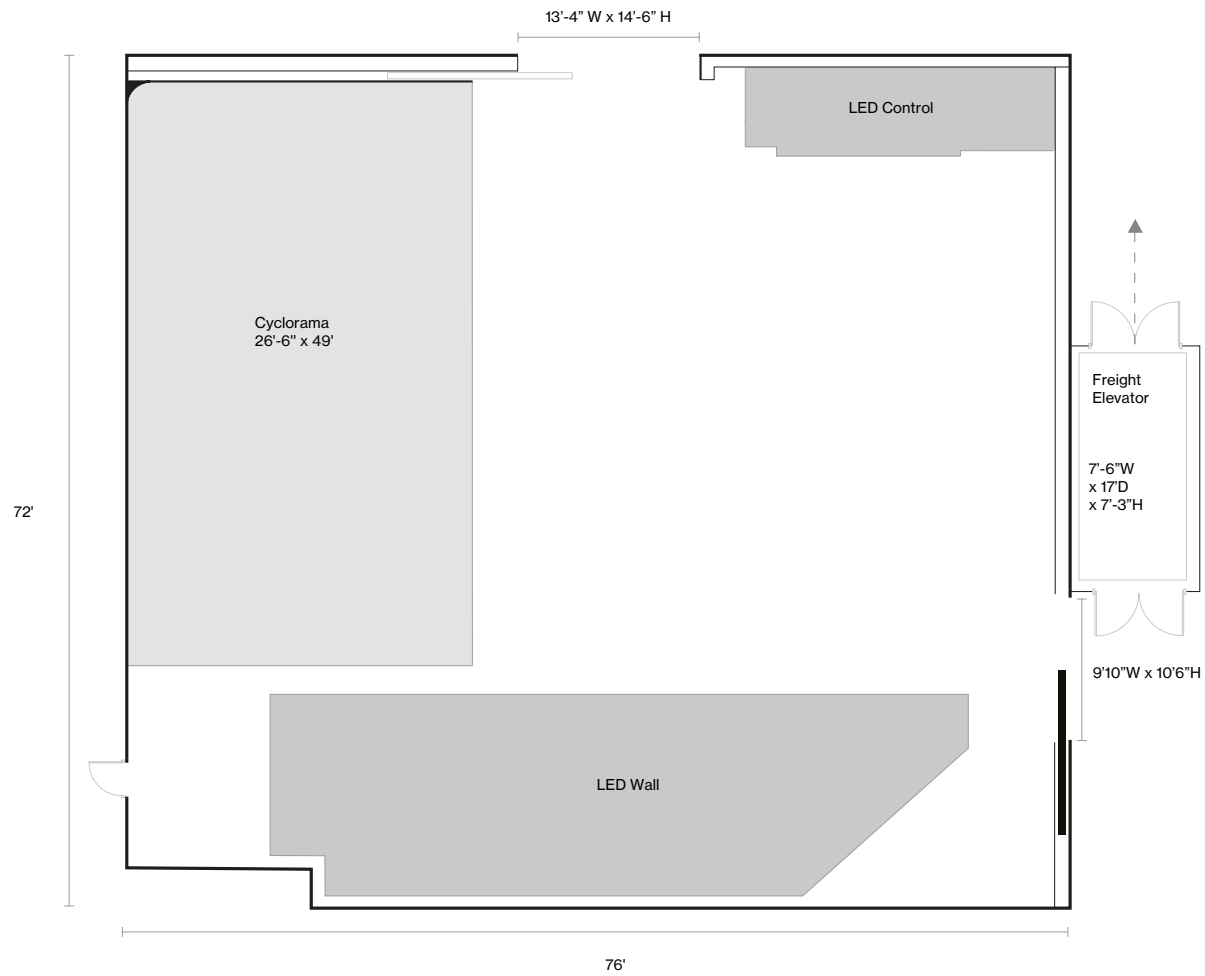
Contact

info@pier59.com
212.691.5959

59 Chelsea Piers 2nd floor
New York, New York 10011

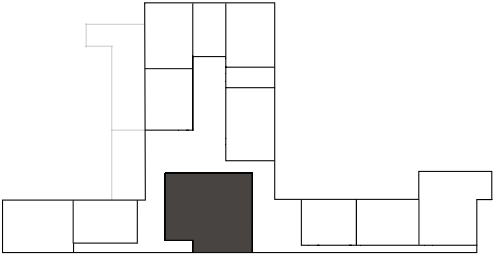
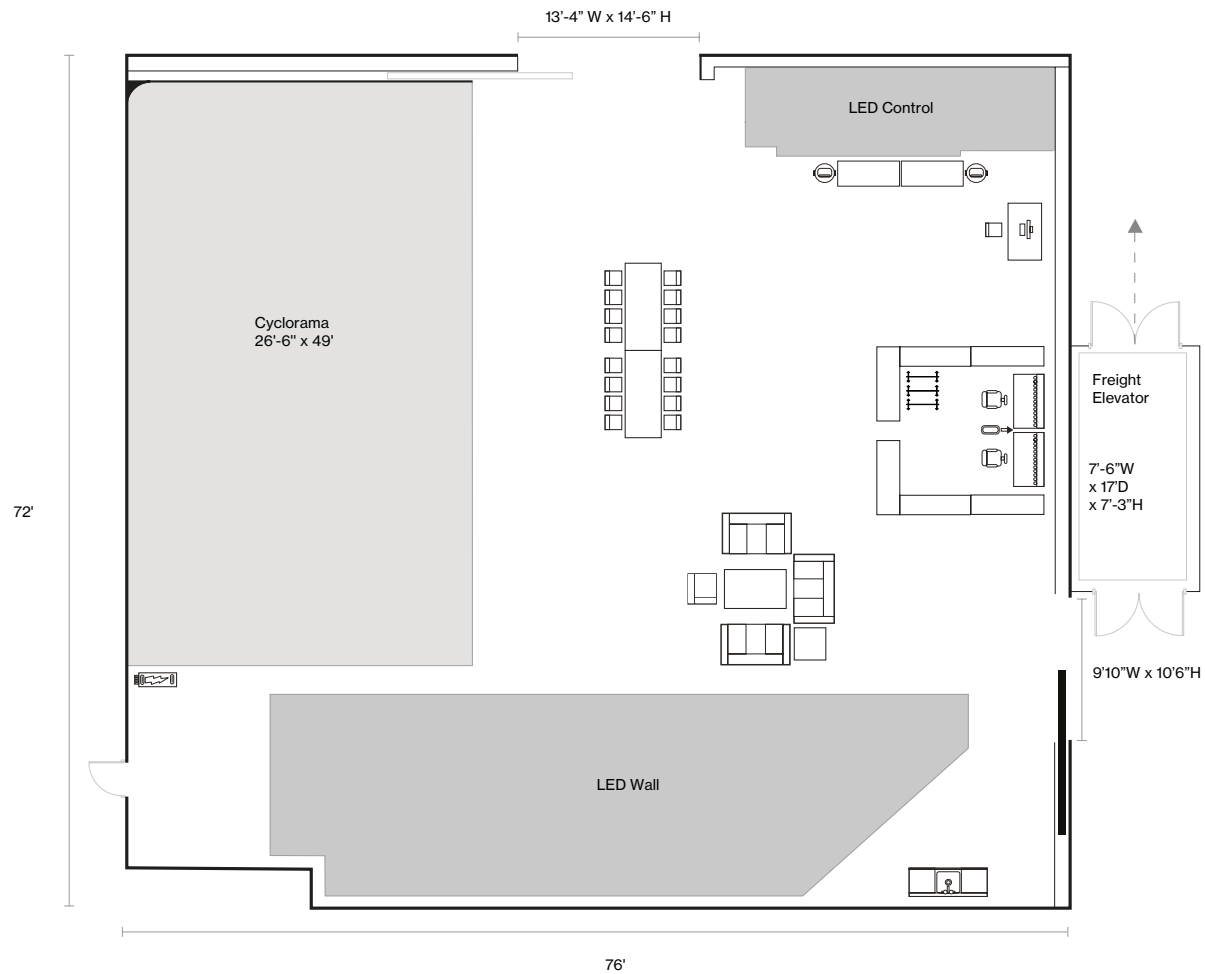
PIER59 STUDIOS

STAGE C



PIER59 STUDIOS

STAGE C



PIER59 STUDIOS

STUDIO 1



Size / Type

3000sf. / Semi-Daylight Studio

Specs

Dimensions: 44'W x 68'2"D x 16'H to Beams /
19'-31' Slope of Ceiling

Cyclorama: 3 Wall, 2 Corner,
42'W x 24'D x 16'H to Beams

North Facing Window: One, 17'10"W x 11'H /
Blackout Capable

Direct Freight Access: Roll Gate, 10'W x 10'H
Power: 400 Amp 3 Phase Distributed by Two
200 Amp Camlock Services

Vehicle Accessible
Salon Hair Washing Station

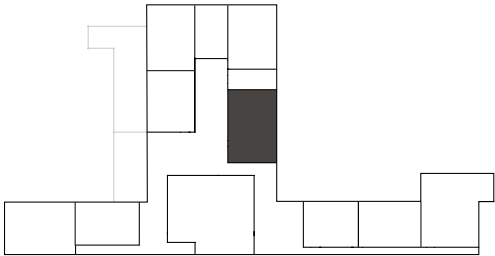
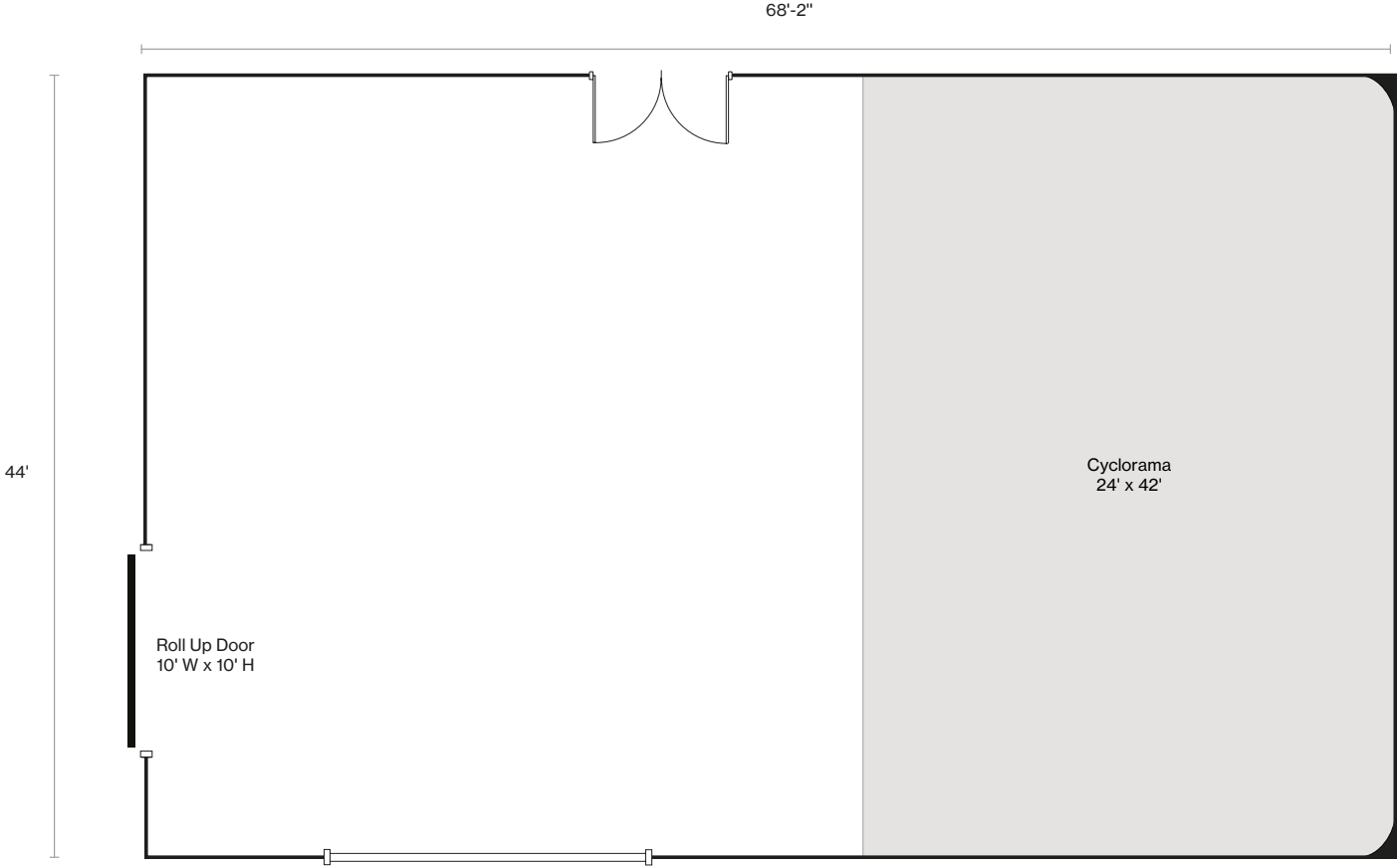
Contact

info@pier59.com
212.691.5959

59 Chelsea Piers 2nd floor
New York, New York 10011

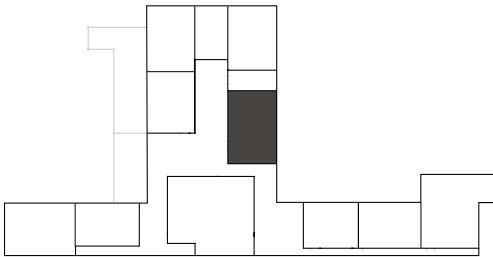
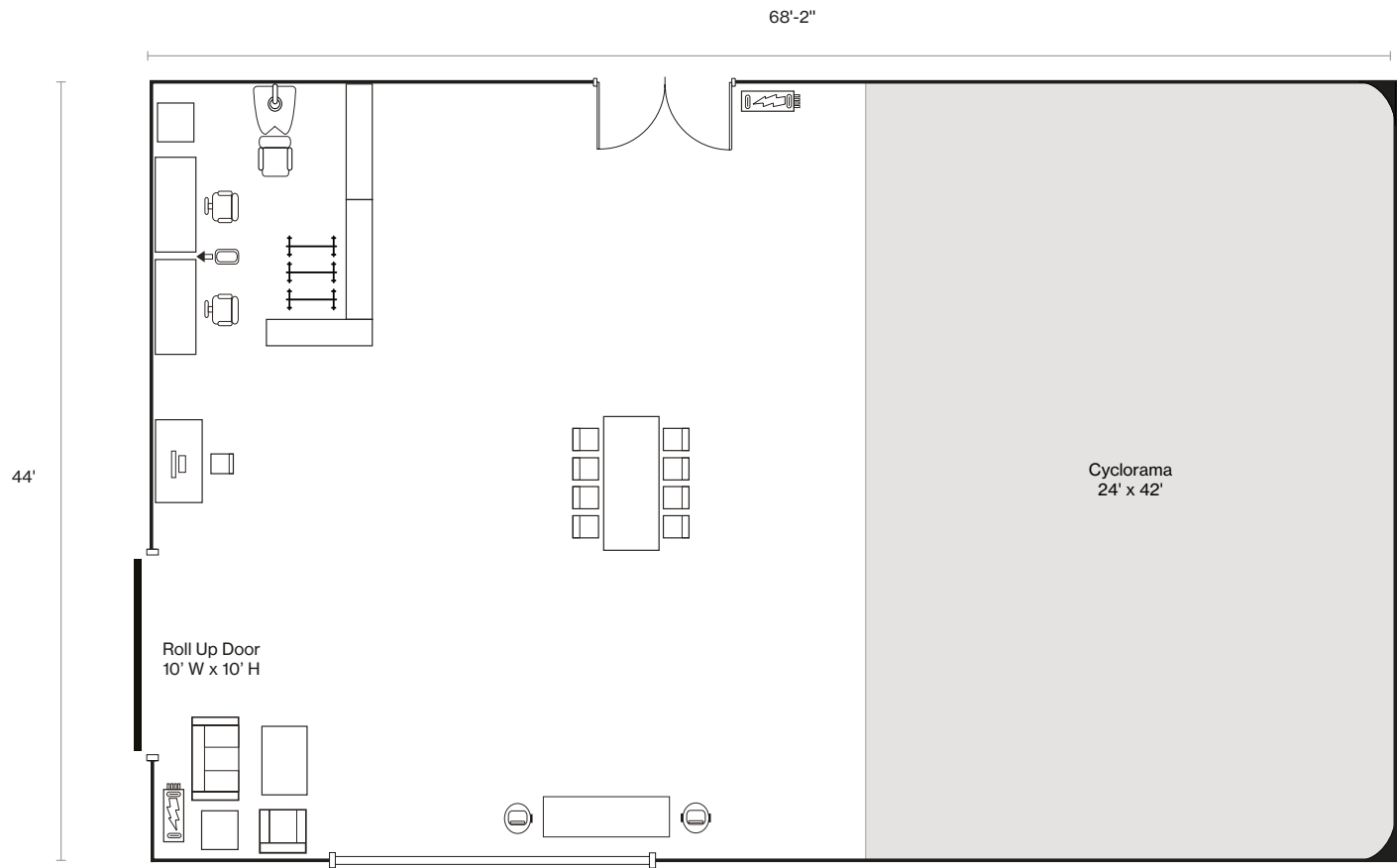
PIER59 STUDIOS


STUDIO 1



PIER59 STUDIOS

STUDIO 1





PIER59 STUDIOS

STUDIO 2

Size / Type

2800sf. / Semi-Daylight Studio

Specs

Dimensions: 44'W x 63'7"D x 16'H to Beams
/ 19'-31' Slope of Ceiling

Cyclorama: 3 Wall, 2 Corner,
42'W x 24'D x 16'H to Beams

North Facing Window: One, 17'9"W x 11'H /
Blackout Capable

Power: 200 Amp 3 Phase Distributed by
Camlock Service

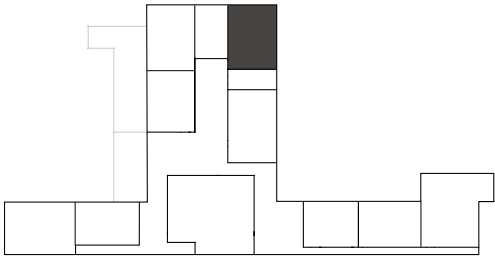
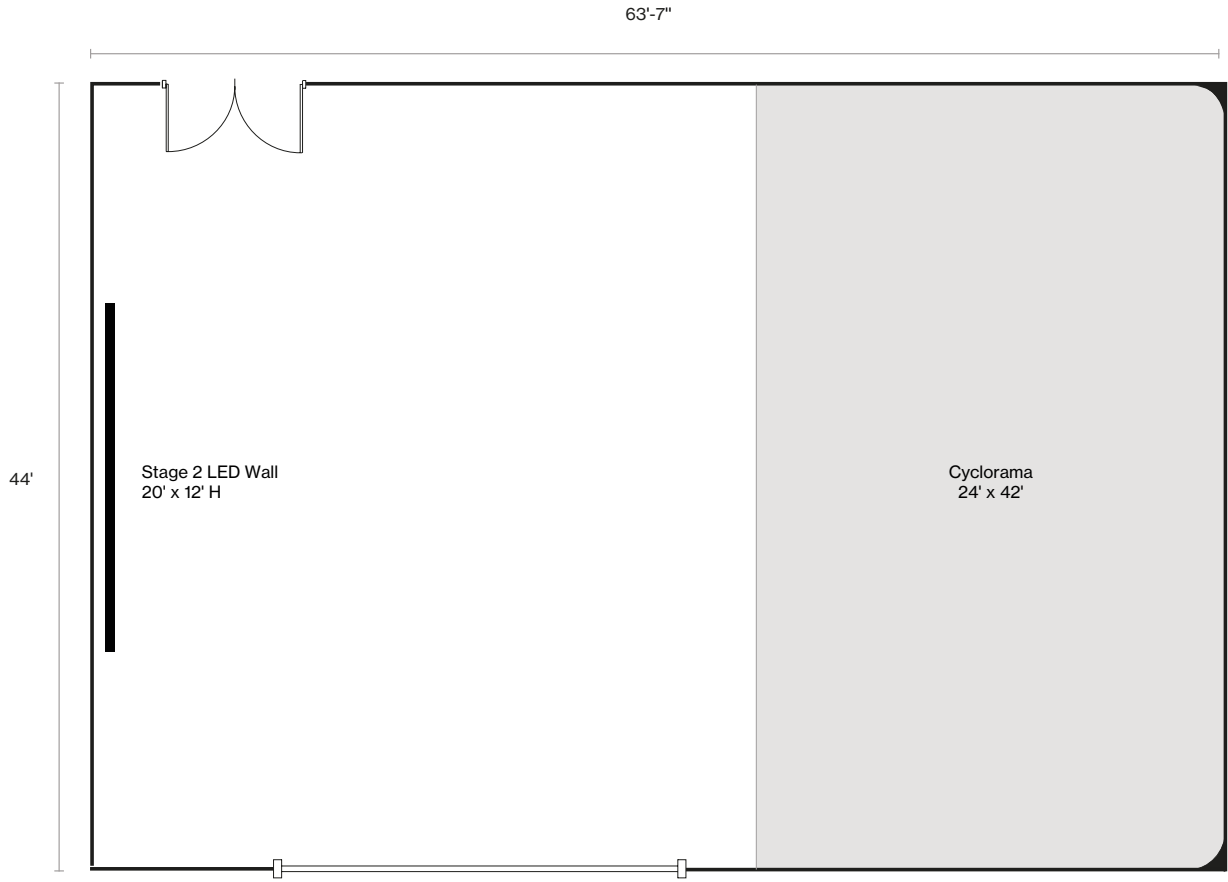
Contact

info@pier59.com
212.691.5959

59 Chelsea Piers 2nd floor
New York, New York 10011

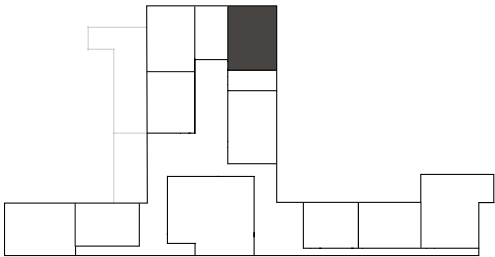
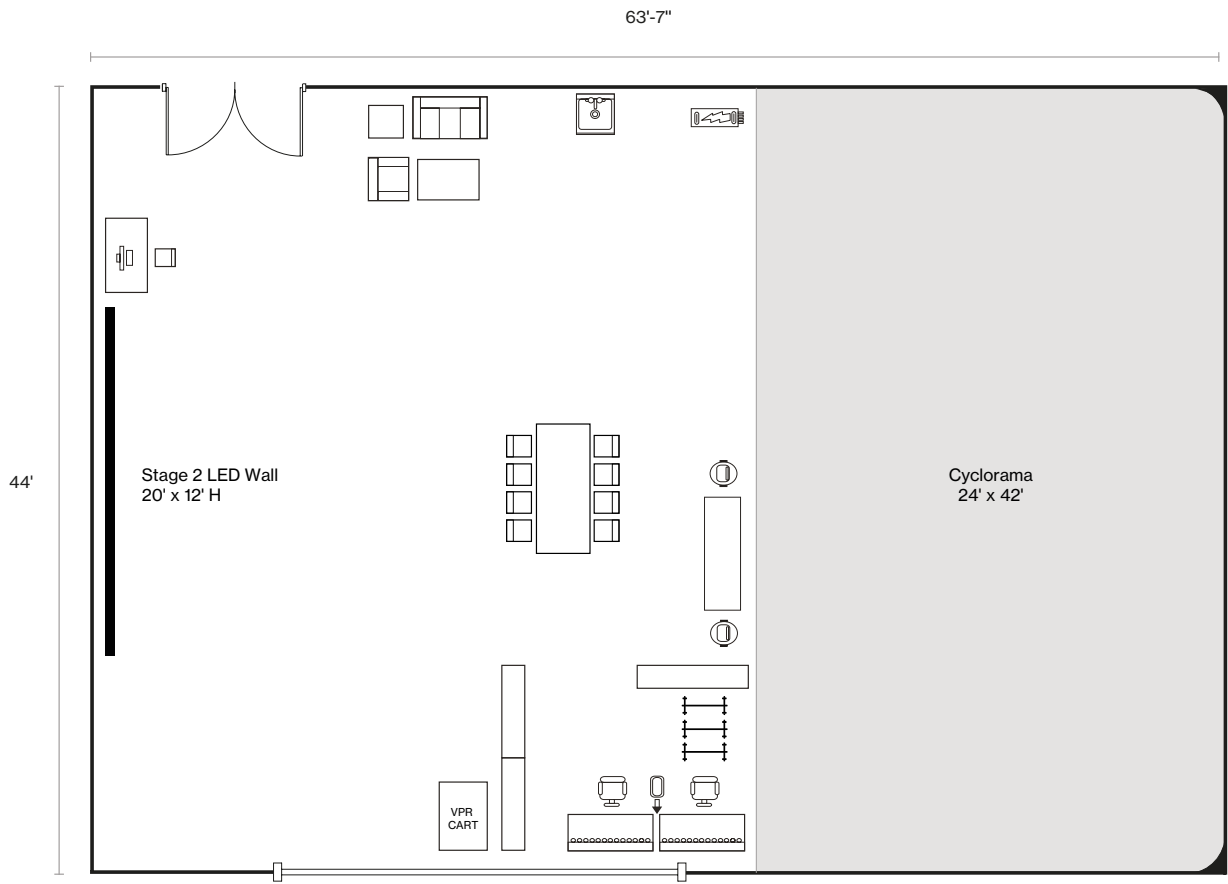
PIER59 STUDIOS

STUDIO 2



PIER59 STUDIOS

STUDIO 2





PIER59 STUDIOS

STUDIO 3

Size / Type

1650sf. / Dark Studio

Specs

Dimensions: 32'W x 52'6"D x 13'5"H to the Grid Over the Cyc

Cyclorama: 3 Wall, 2 Corner, 30'W x 25'D x 13'5"H

Power: 200 Amp 3 Phase Distributed by Camlock Service

Salon Hair Washing Station

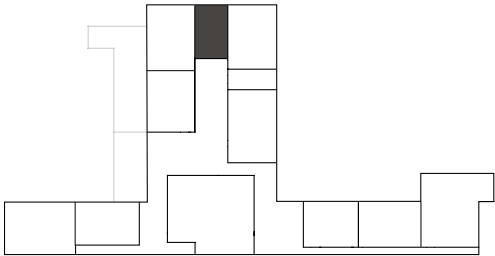
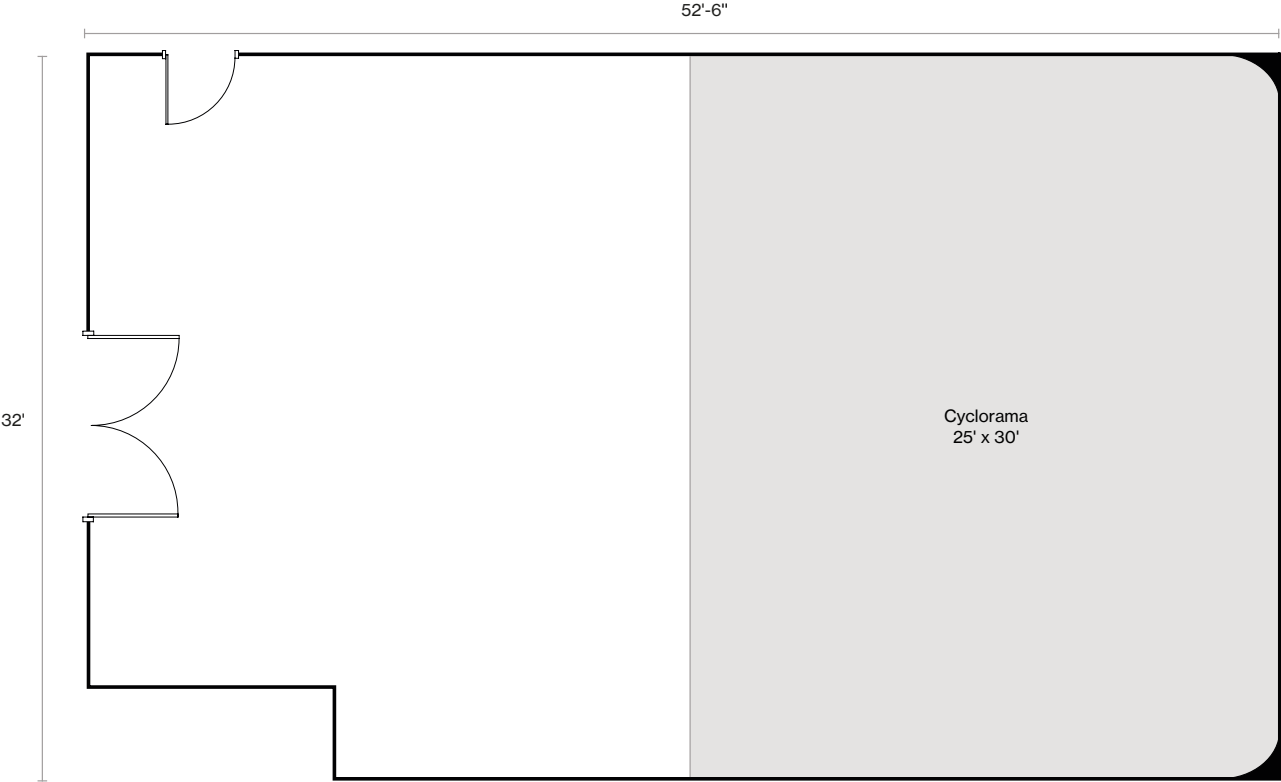
Contact

info@pier59.com
212.691.5959

59 Chelsea Piers 2nd floor
New York, New York 10011

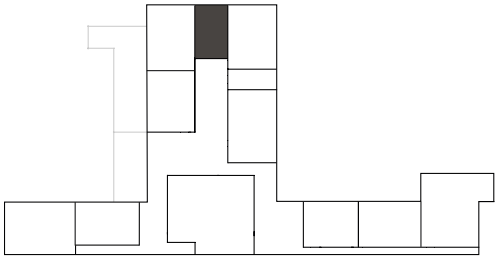
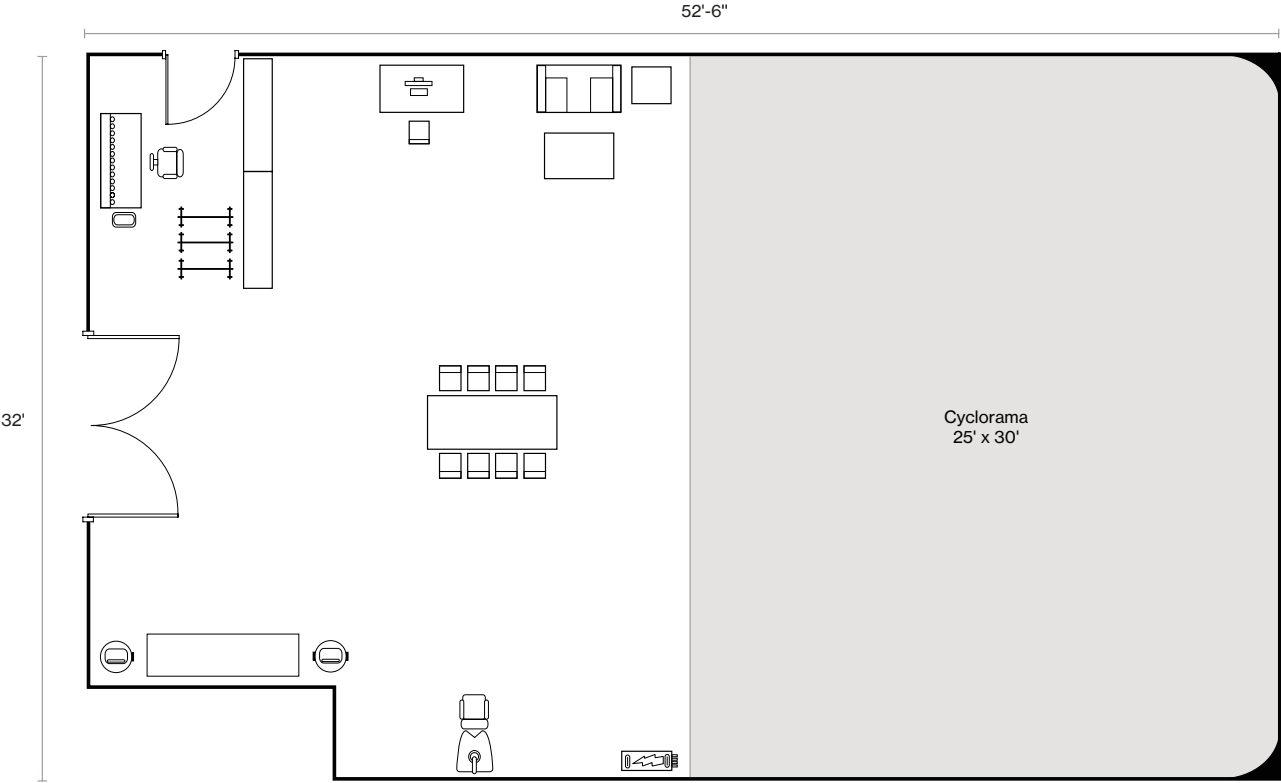
PIER59 STUDIOS

STUDIO 3



PIER59 STUDIOS

STUDIO 3



PIER59 STUDIOS

STUDIO 4



Size / Type

2900sf. / South Daylight Studio

Specs

Dimensions: 46'W x 63'D x 16'H to Beams /
19'-31' Slope of Ceiling

Cyclorama: 2 Wall, 1 Corner,
26'W x 25'D x 16'H to Beams

South Facing Windows: Wall of Three,
17'10"W x 11'H / Blackout Capable

Skylight: One, 15'W x 18'D / Blackout
Capable

Doors Leading to Sun Deck: 5'8"W x 6'11"H

Retractable Wall to Studio 5:
46'W x 13'10"H

Power: 200 Amp 3 Phase Distributed by
Camlock Service

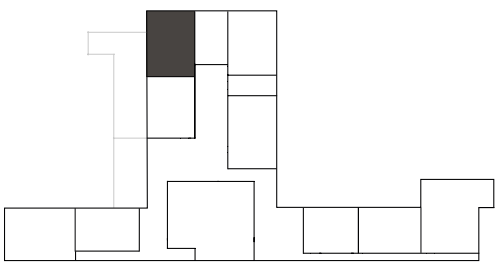
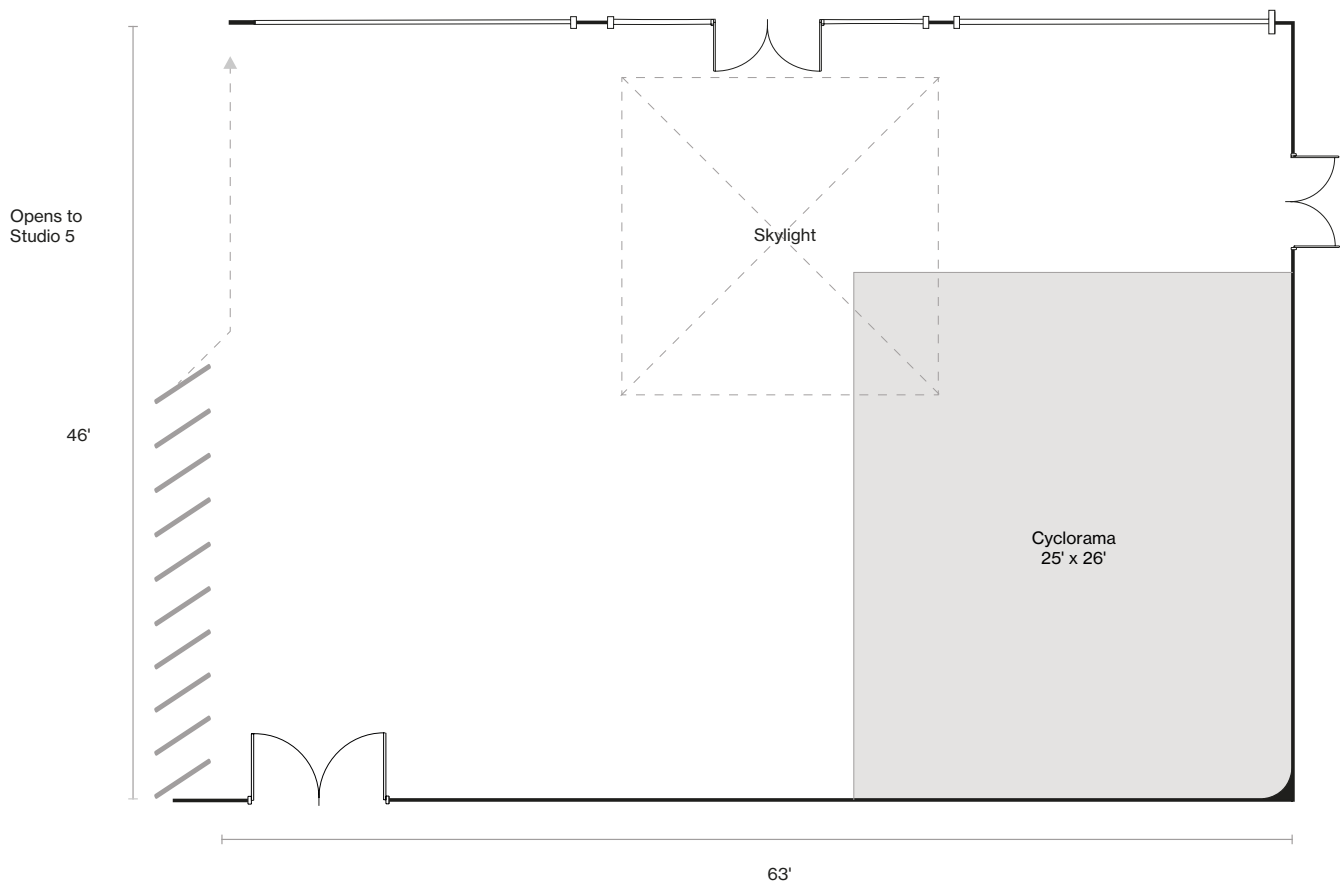
Contact

info@pier59.com
212.691.5959

59 Chelsea Piers 2nd floor
New York, New York 10011

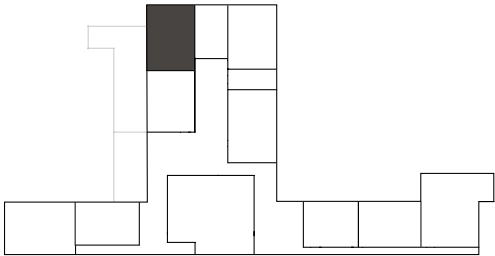
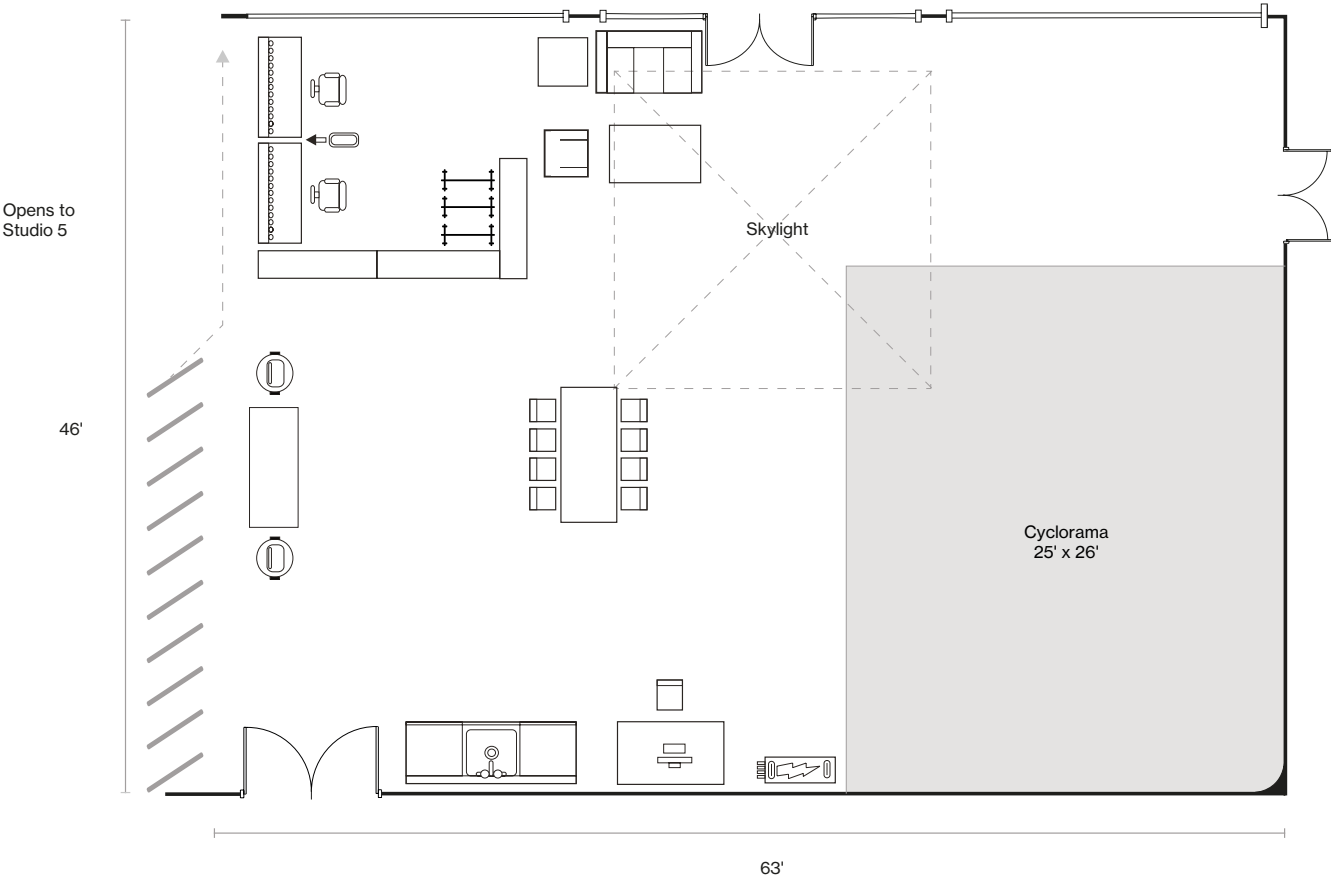
PIER59 STUDIOS

STUDIO 4



PIER59 STUDIOS

STUDIO 4



PIER59 STUDIOS

STUDIO 5



Size / Type

2700sf. / South Daylight Studio

Specs

Dimensions: 46'W x 58'8"D x 16'H to Beams
/ 19'-31' Slope of Ceiling

Cyclorama: One Wall, 30'W x 24'D x 16'H to
Beams

South Facing Windows: Wall of Three,
17'9"W x 11'H / Blackout Capable

Skylight: One, 15'W x 18'D / Blackout
Capable

Doors Leading to Sun Deck: 5'8"W x 6'11"H

Retractable Wall to Studio 4:
46'W x 13'10"H

Power: 200 Amp 3 Phase Distributed by
Camlock Service

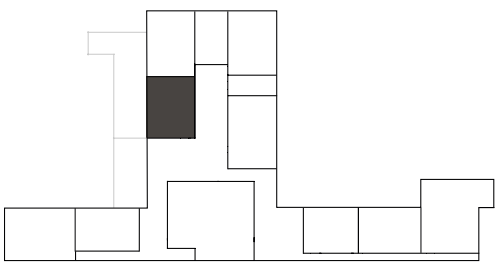
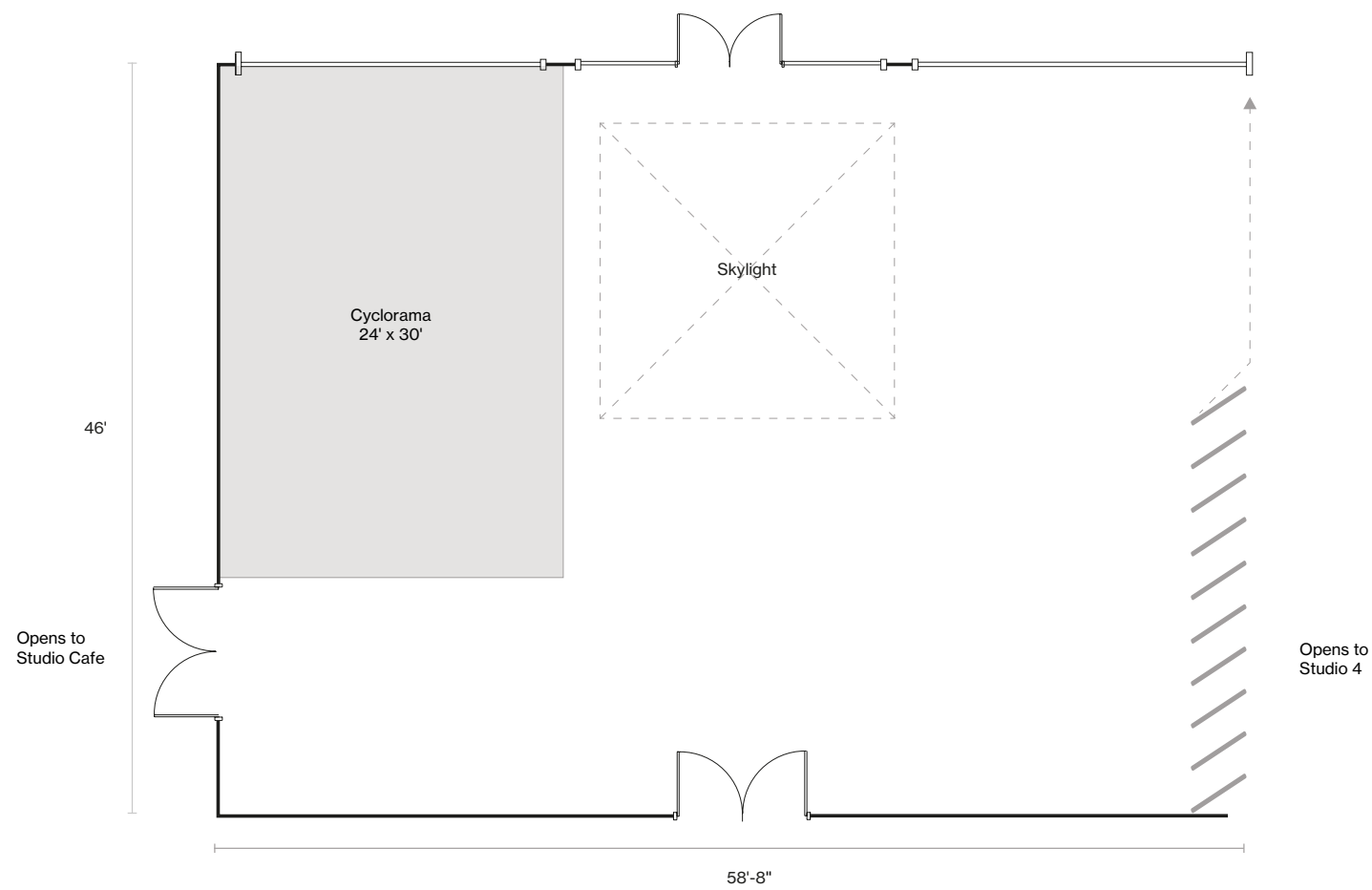
Contact

info@pier59.com
212.691.5959

59 Chelsea Piers 2nd floor
New York, New York 10011

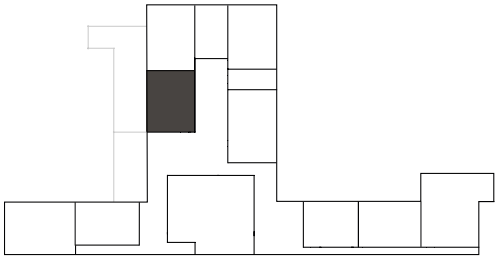
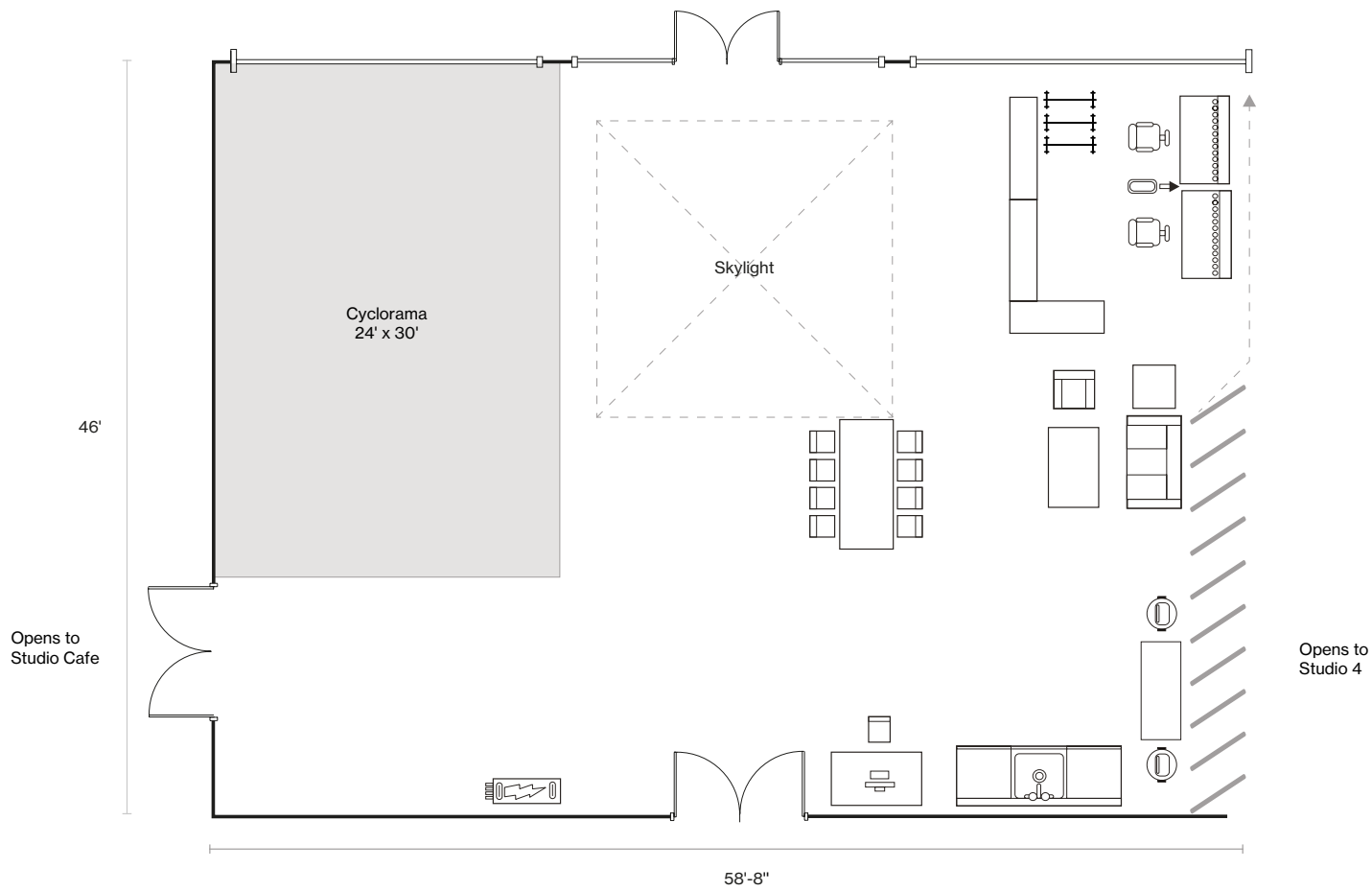
PIER59 STUDIOS

STUDIO 5



PIER59 STUDIOS

STUDIO 5



PIER59 STUDIOS

STUDIOS 4+5

Size / Type

5600sf. / Convertable Studios

Studio 4 Specs

Dimensions: 46'W x 63'D x 16'H to Beams / 19'-31' Slope of Ceiling

Cyclorama: 2 Wall, 1 Corner, 26'W x 25'D x 16'H to Beams

South Facing Windows: Wall of Three, 17'10"W x 11'H / Blackout Capable

Skylight: One, 15'W x 18'D / Blackout Capable

Doors Leading to Sun Deck: 5'8"W x 6'11"H

Retractable Wall to Studio 5: 46'W x 13'10"H

Power: 200 Amp 3 Phase Distributed by Camlock Service

Studio 5 Specs

Dimensions: 46'W x 58'8"D x 16'H to Beams / 19'-31' Slope of Ceiling

Cyclorama: One Wall, 30'W x 24'D x 16'H to Beams

South Facing Windows: Wall of Three, 17'9"W x 11'H / Blackout Capable

Skylight: One, 15'W x 18'D / Blackout Capable

Doors Leading to Sun Deck: 5'8"W x 6'11"H

Retractable Wall to Studio 4: 46'W x 13'10"H

Power: 200 Amp 3 Phase Distributed by Camlock Service

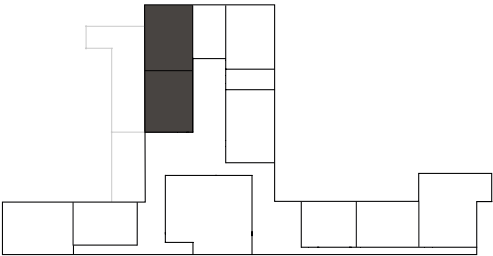
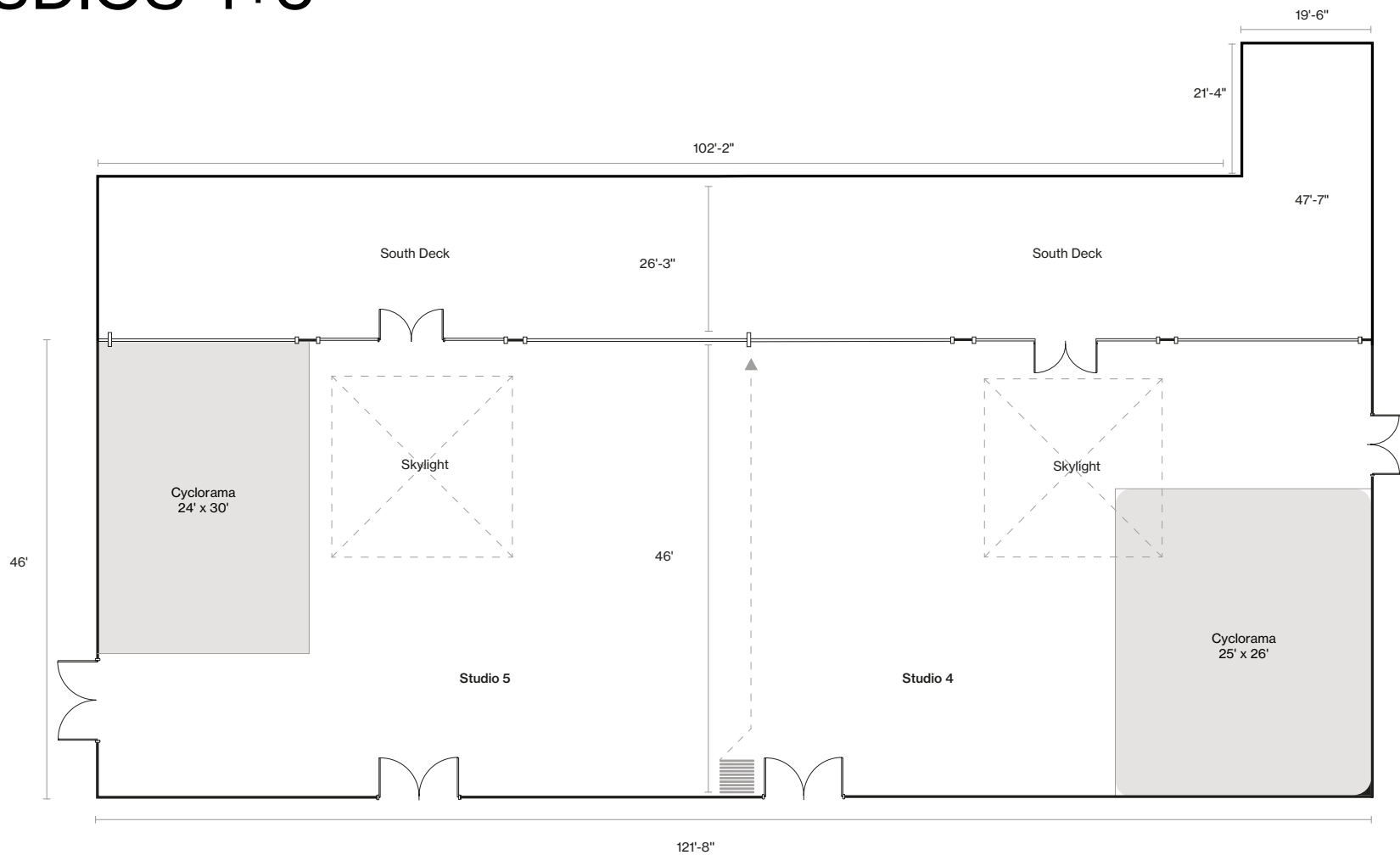
Contact

info@pier59.com
212.691.5959

59 Chelsea Piers 2nd floor
New York, New York 10011

PIER59 STUDIOS

STUDIOS 4+5



PIER59 STUDIOS

STUDIO 6



Size / Type

2500sf. / Western Daylight Studio

Specs

Dimensions: 59'6"W x 42'D x 11'6"H to Beams / 15'-18' Slope of Ceiling

Cyclorama: One Wall, 21'W x 20'D x 16'H

West Facing Windows: Wall of Two, 17'10"W x 9'H and One 11'9"W x 9'H / Blackout Capable

Skylight: One, 18'W x 15'D / Blackout Capable

Retractable Wall to Studio 7: 42'W x 10'8"H

Power: 200 Amp 3 Phase Distributed by Camlock Service

Salon Hair Washing Station

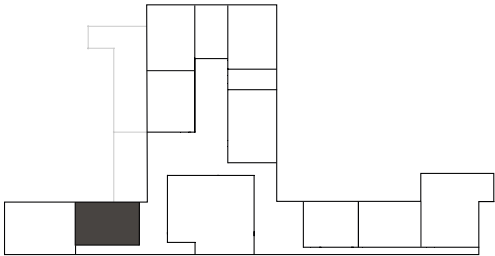
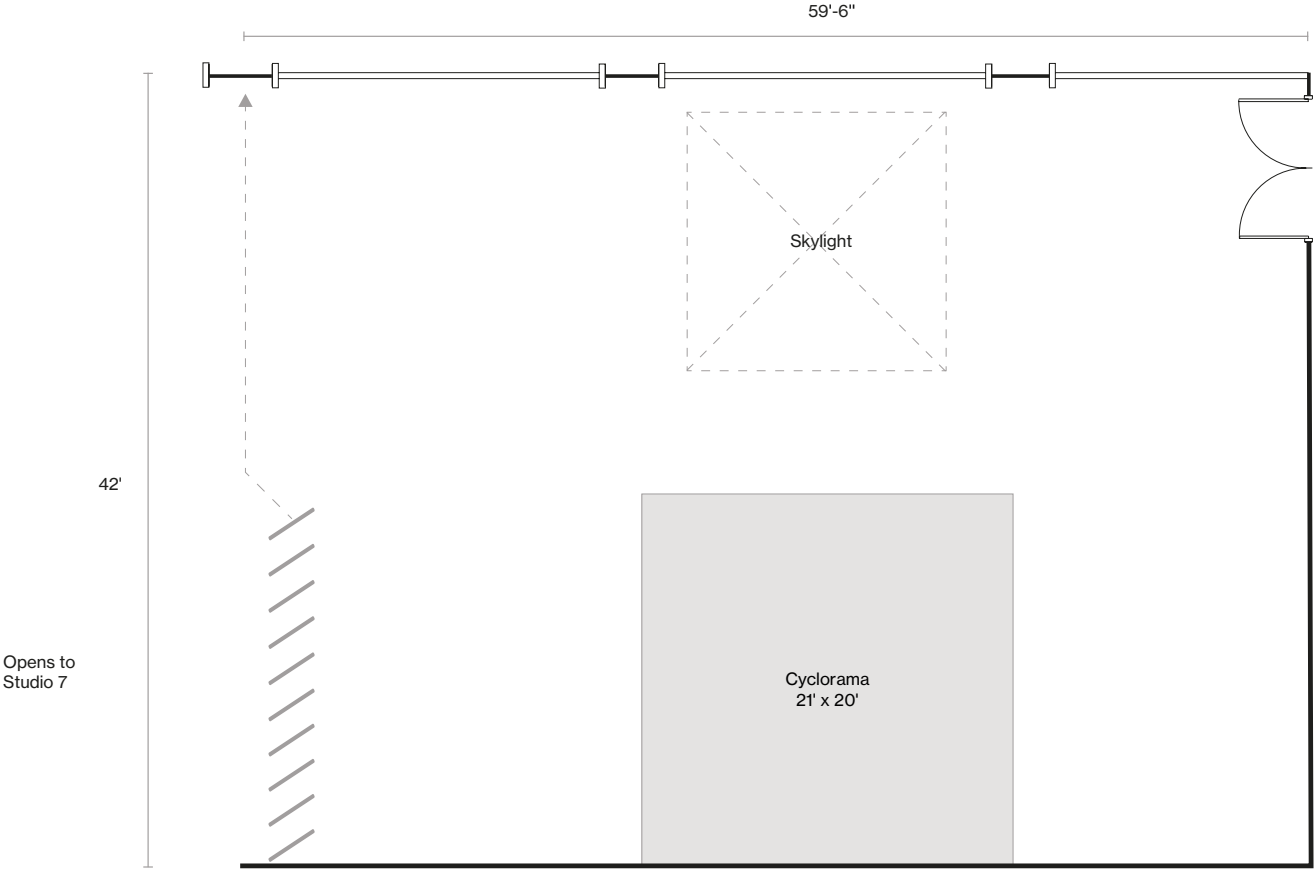
Contact

info@pier59.com
212.691.5959

59 Chelsea Piers 2nd floor
New York, New York 10011

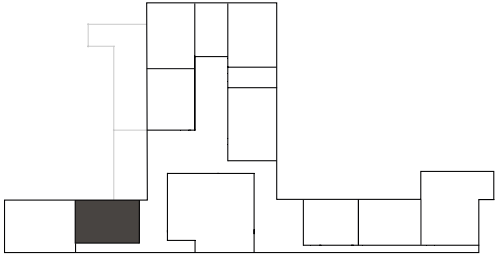
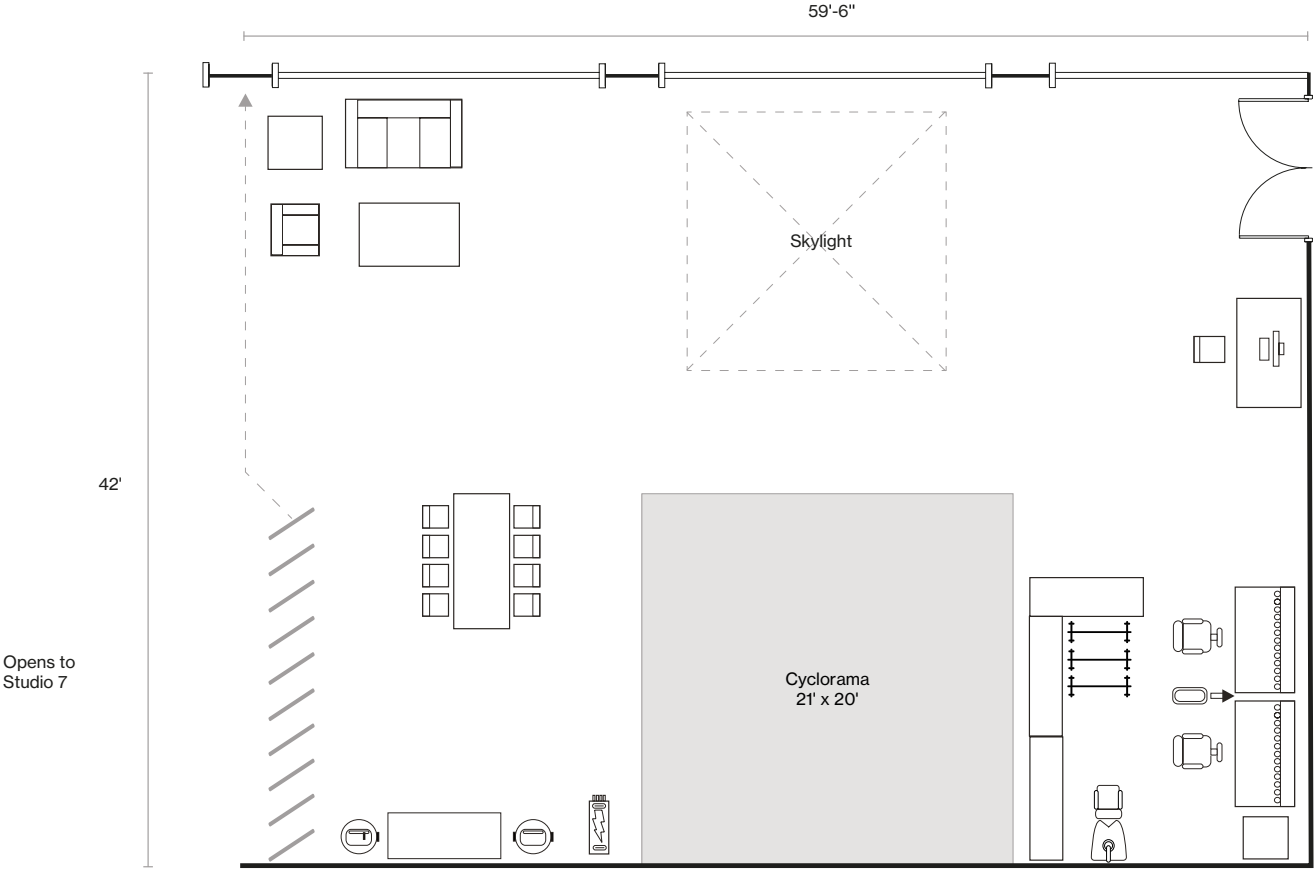
PIER59 STUDIOS

STUDIO 6



PIER59 STUDIOS

STUDIO 6



PIER59 STUDIOS

STUDIO 7



Size / Type

3400sf. / Southwest Daylight Studio

Specs

Dimensions: 65'6"W x 52'D x 11'6"H to Beams / 15'-18' Slope of Ceiling

Cyclorama: 2 Wall, 1 Scoop, 35'W x 23'D x 11'H

West Facing Windows: Wall of Three, 17'10"W x 9'H

South Facing Window: One, 17'10"W x 8'H / Blackout Capable

Skylight: One, 18'W x 15'D / Blackout Capable

Retractable Wall to Studio 6: 42'W x 10'8"H

Power: 200 Amp 3 Phase Distributed by Camlock Service

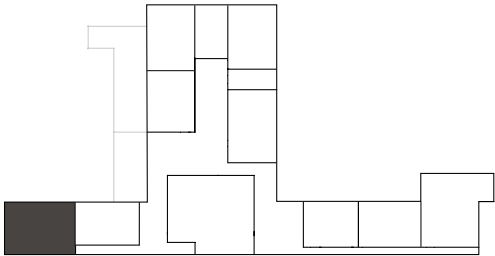
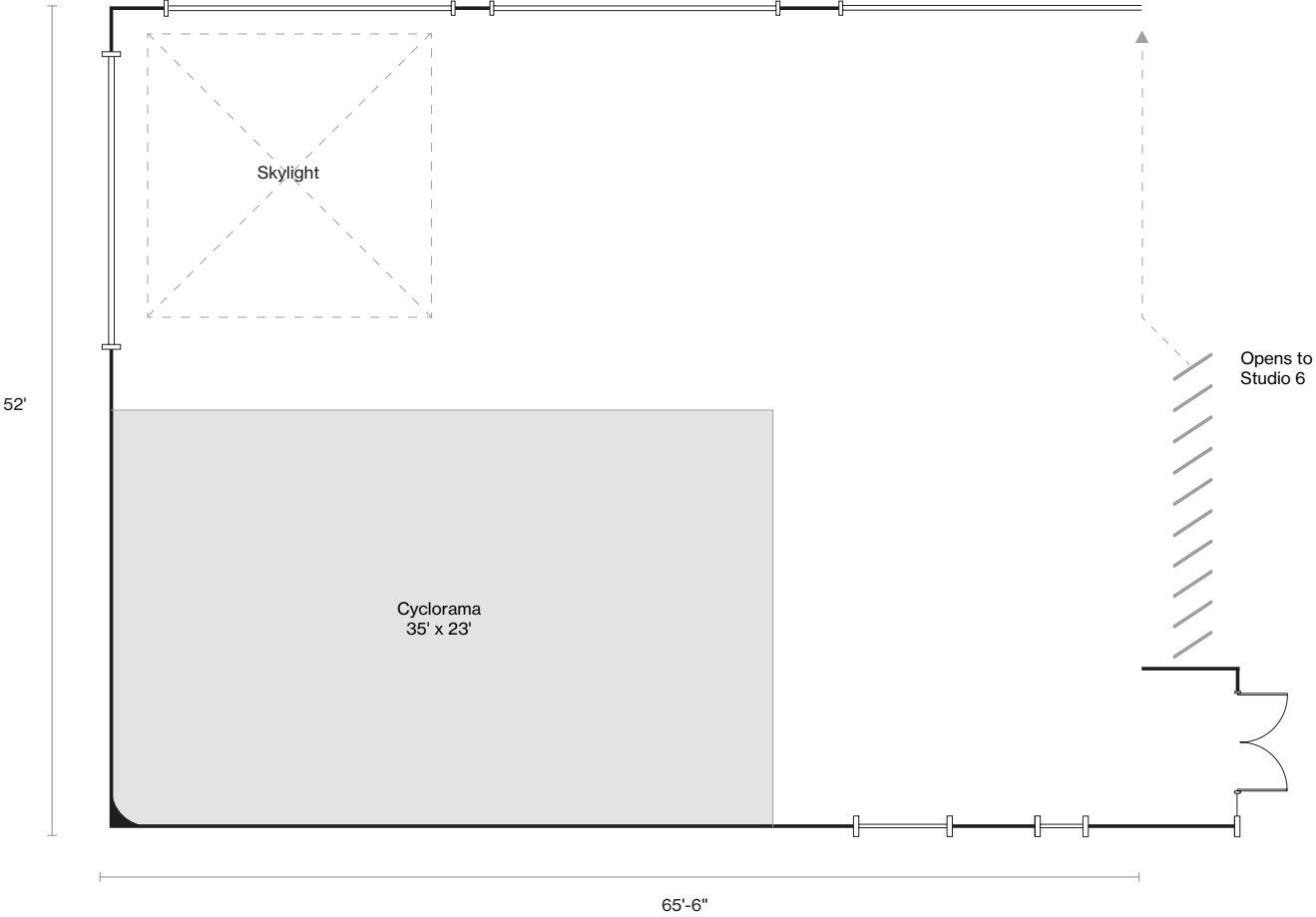
Contact

info@pier59.com
212.691.5959

59 Chelsea Piers 2nd floor
New York, New York 10011

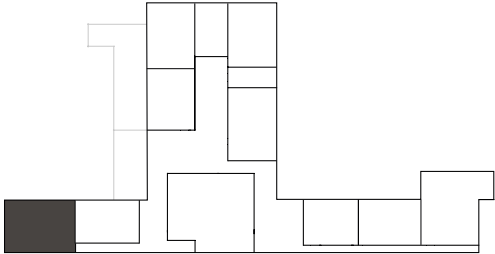
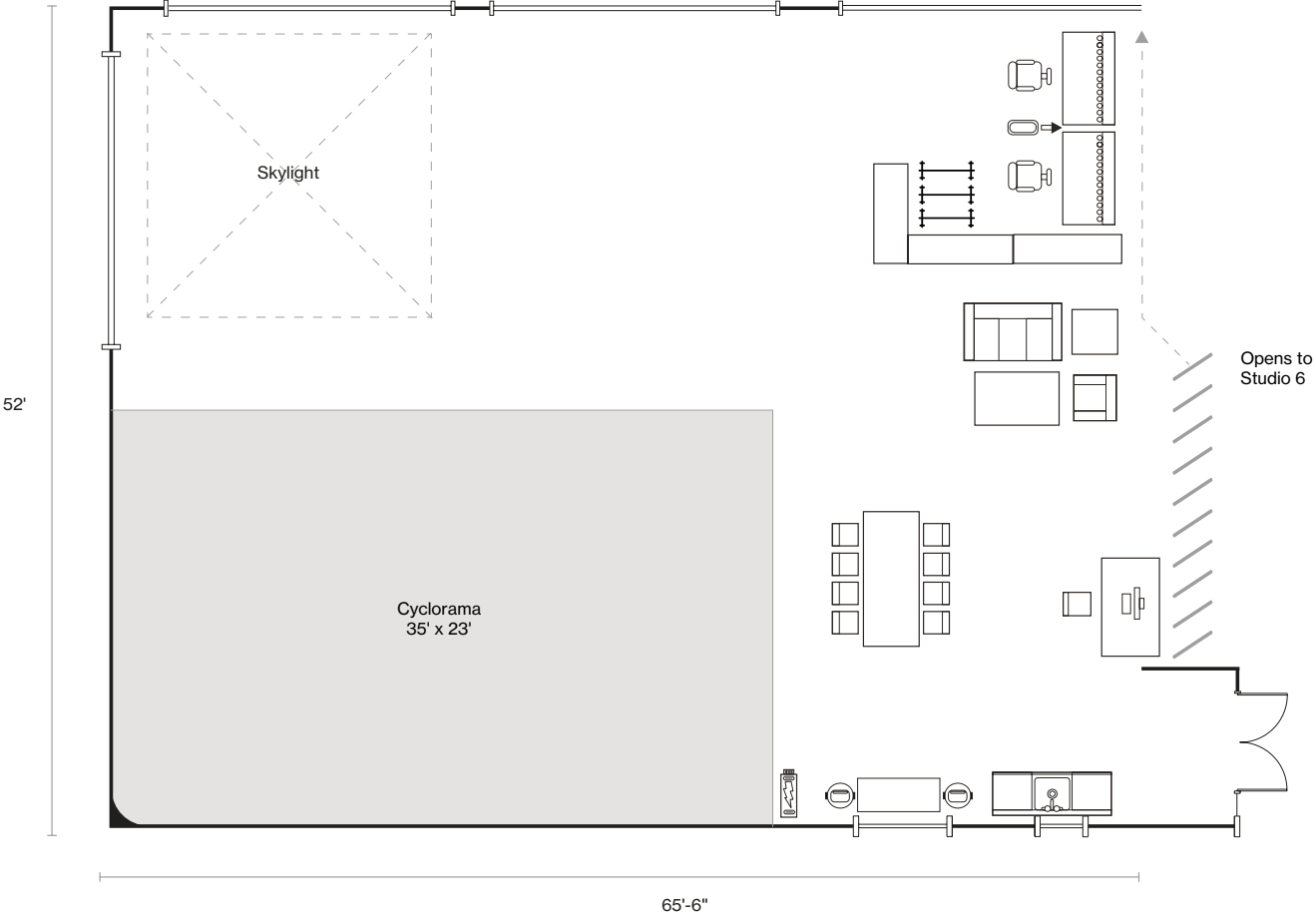
PIER59 STUDIOS

STUDIO 7



PIER59 STUDIOS

STUDIO 7



PIER59 STUDIOS

STUDIOS 6+7

Size / Type

5900sf. / Convertable Studios

Studio 6 Specs

Dimensions: 59'6"W x 42'D x 11'6"H to Beams / 15'-18' Slope of Ceiling

Cyclorama: One Wall, 21'W x 20'D x 16'H

West Facing Windows: Wall of Two, 17'10"W x 9'H and One 11'9"W x 9'H / Blackout Capable

Skylight: One, 18'W x 15'D / Blackout Capable

Retractable Wall to Studio 7: 42'W x 10'8"H

Power: 200 Amp 3 Phase Distributed by Camlock Service

Salon Hair Washing Station

Studio 7 Specs

Dimensions: 65'6"W x 52'D x 11'6"H to Beams / 15'-18' Slope of Ceiling

Cyclorama: 2 Wall, 1 Scoop, 35'W x 23'D x 11'H

West Facing Windows: Wall of Three, 17'10"W x 9'H

South Facing Window: One, 17'10"W x 8'H / Blackout Capable

Skylight: One, 18'W x 15'D / Blackout Capable

Retractable Wall to Studio 6: 42'W x 10'8"H

Power: 200 Amp 3 Phase Distributed by Camlock Service

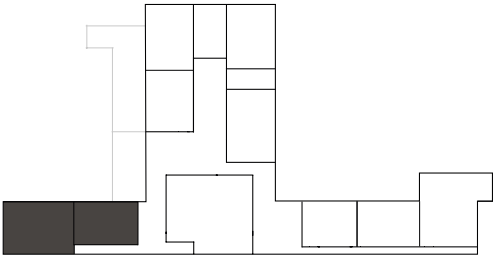
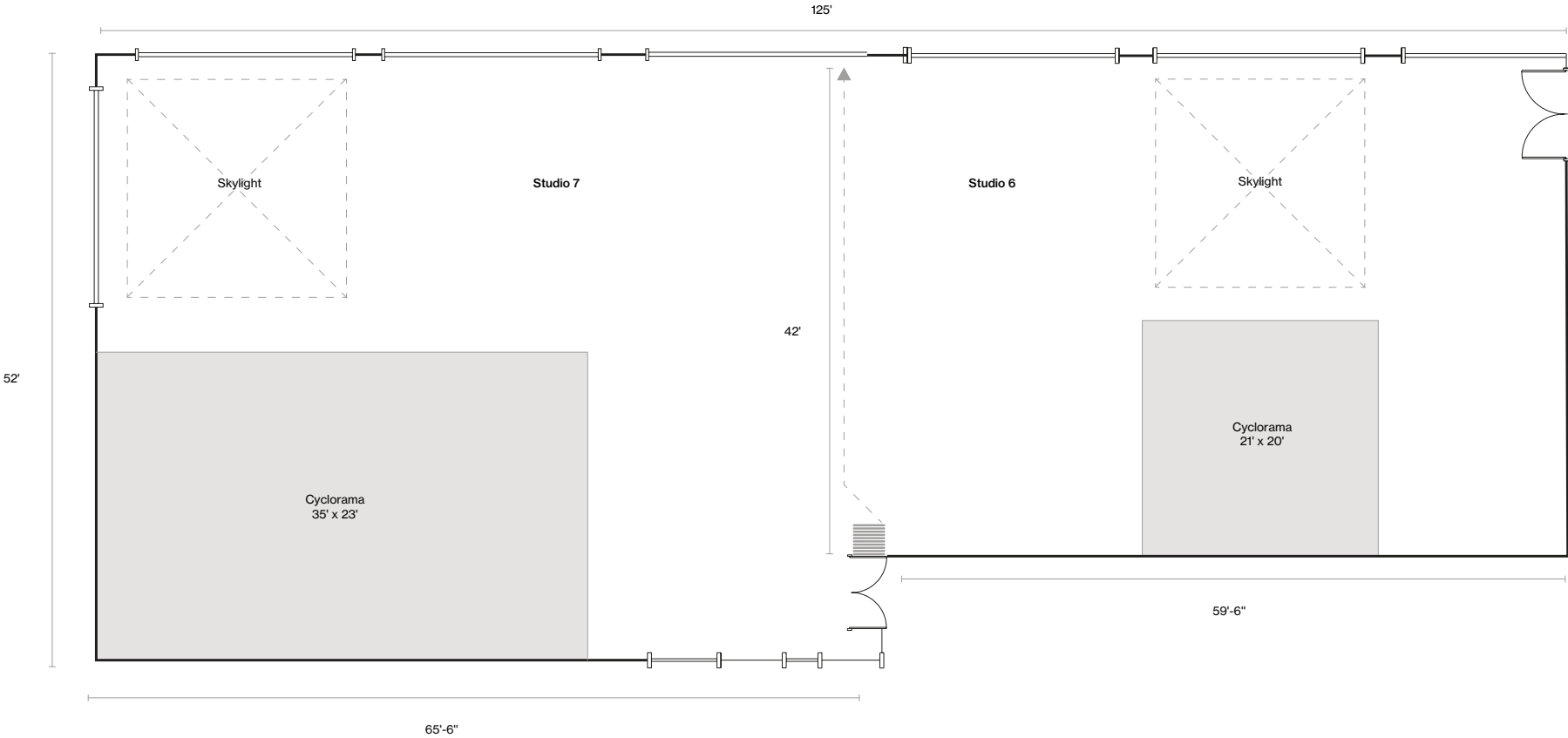
Contact

info@pier59.com
212.691.5959

59 Chelsea Piers 2nd floor
New York, New York 10011

PIER59 STUDIOS

STUDIOS 6+ 7



PIER59 STUDIOS

STUDIO 8



Size / Type

1800sf. / Western Daylight Studio

Specs

Dimensions: 42'9"W x 42'D x 11'8"H to Beams / 15'-18' Slope of Ceiling

Cyclorama: One Wall, 18'W x 21'6"D x 16'H

West Facing Windows: Wall of 2, 17'9"W x 10'H / Blackout Capable

Retractable Wall to Studio 9 / Freight Hallway: 42'W x 11'H

Power: 200 Amp 3 Phase Distributed by Camlock Service

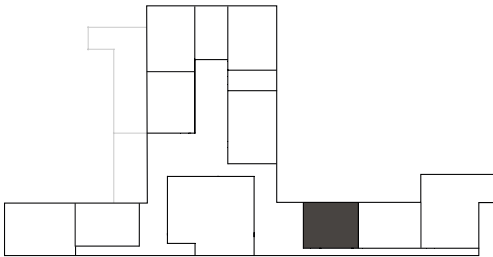
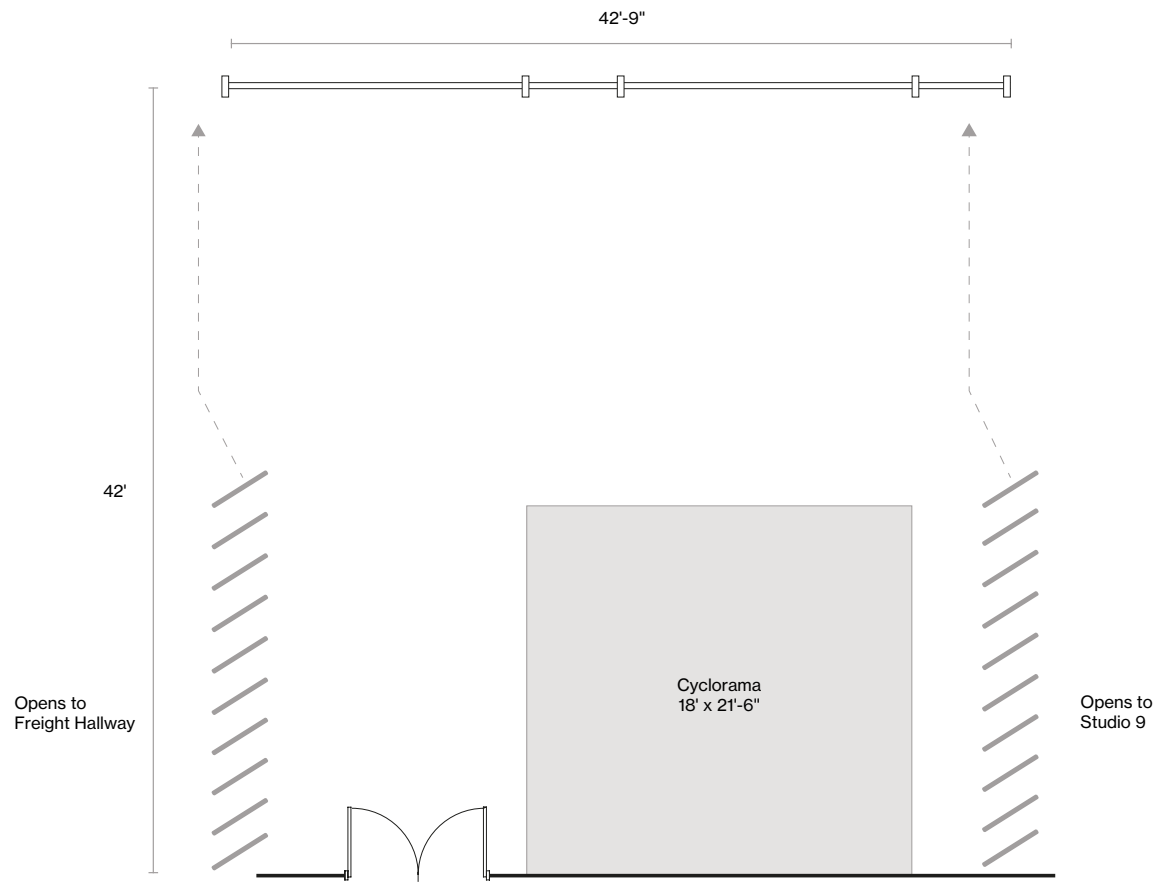
Contact

info@pier59.com
212.691.5959

59 Chelsea Piers 2nd floor
New York, New York 10011

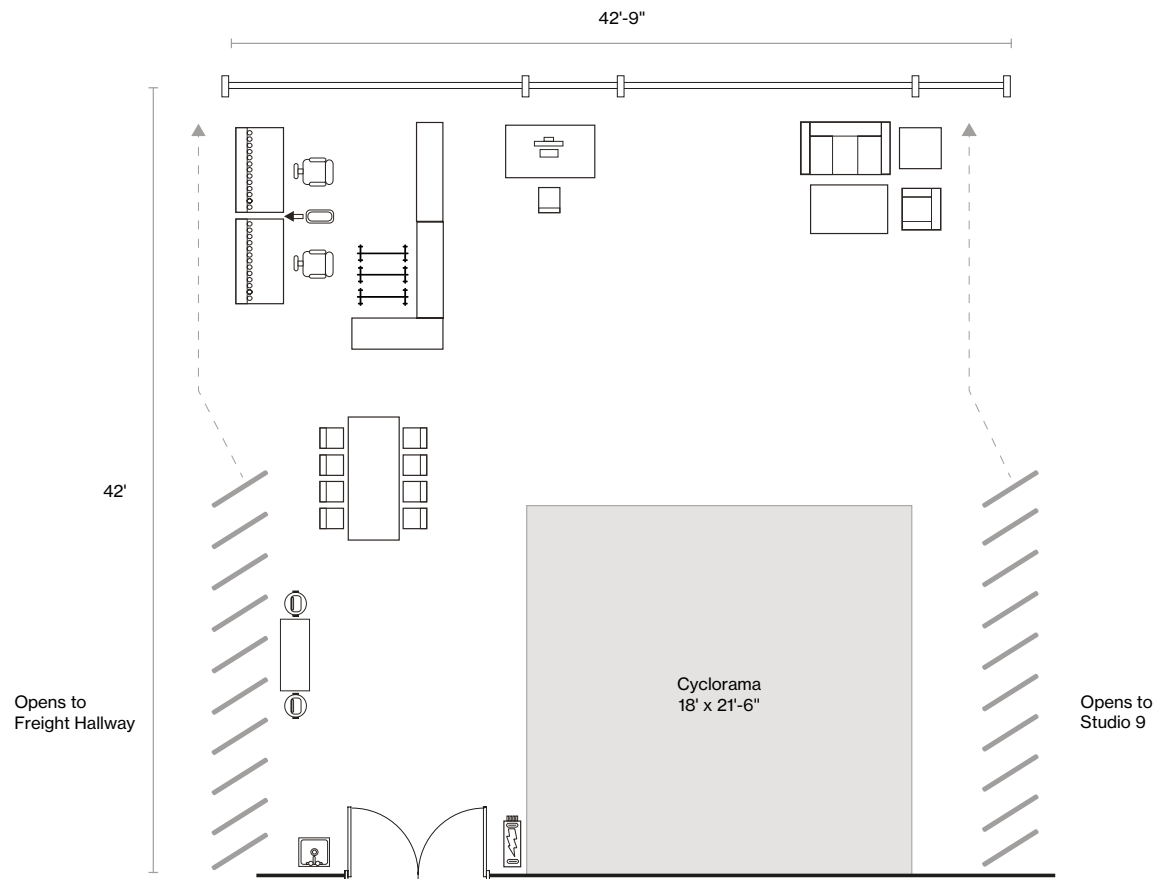
PIER59 STUDIOS

STUDIO 8



PIER59 STUDIOS

STUDIO 8



PIER59 STUDIOS

STUDIO 9



Size / Type

2800sf. / Western Daylight Studio

Specs

Dimensions: 66'9"W x 42'D x 11'8"H to Beams / 15'-18' Slope of Ceiling

Cyclorama: One Wall, 20'9"W x 21'6"D x 16'H

West Facing Windows: Wall of Three, 17'9"W x 10'H / Blackout Capable

Retractable Wall to Studios 8 + 10: 42'W x 11'H

Power: 200 Amp 3 Phase Distributed by Camlock Service

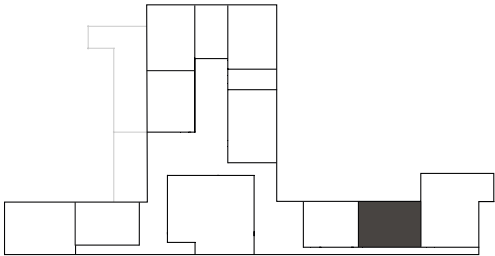
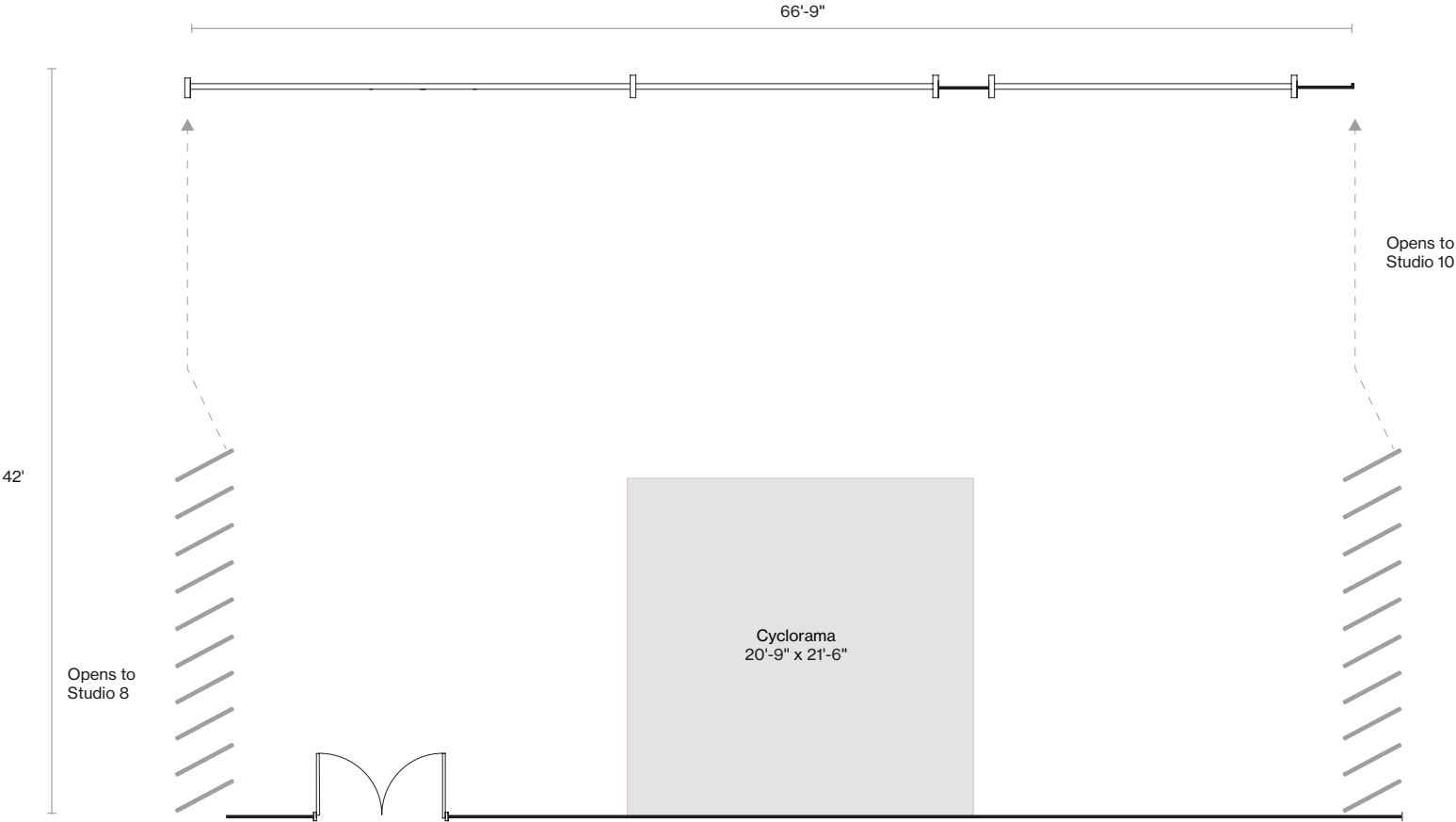
Contact

info@pier59.com
212.691.5959

59 Chelsea Piers 2nd floor
New York, New York 10011

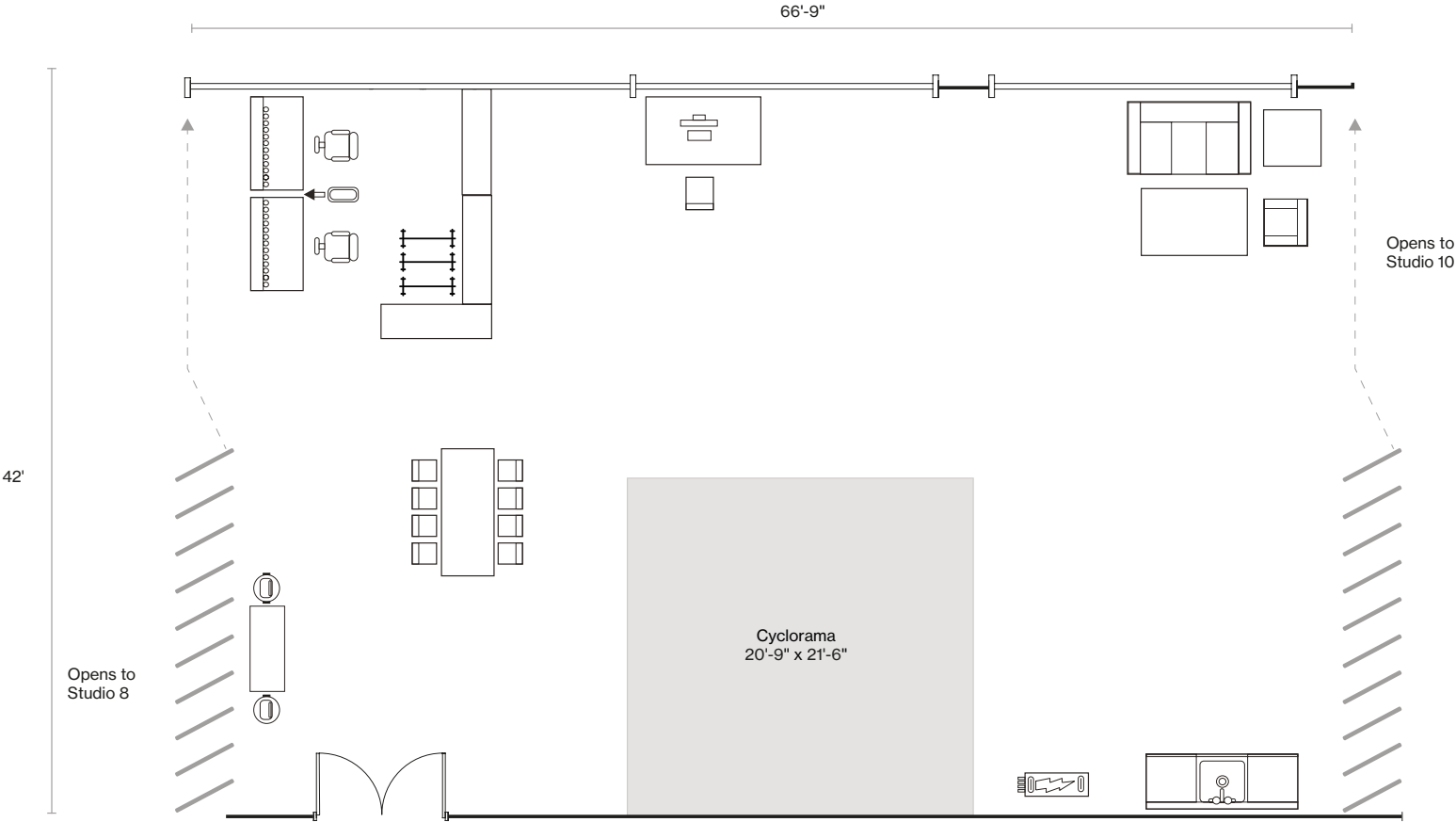
PIER59 STUDIOS

STUDIO 9



PIER59 STUDIOS

STUDIO 9





PIER59 STUDIOS

STUDIO 8+9

Size / Type

4600sf. / Convertable Studios

Studio 8 Specs

Dimensions: 42'9"W x 42'D x 11'8"H to Beams / 15'-18' Slope of Ceiling

Cyclorama: One Wall, 18'W x 21'6"D x 16'H

West Facing Windows: Wall of 2, 17'9"W x 10'H / Blackout Capable

Retractable Wall to Studio 9 / Freight Hallway: 42'W x 11'H

Power: 200 Amp 3 Phase Distributed by Camlock Service

Studio 9 Specs

Dimensions: 66'9"W x 42'D x 11'8"H to Beams / 15'-18' Slope of Ceiling

Cyclorama: One Wall, 20'9"W x 21'6"D x 16'H

West Facing Windows: Wall of Three, 17'9"W x 10'H / Blackout Capable

Retractable Wall to Studios 8 + 10: 42'W x 11'H

Power: 200 Amp 3 Phase Distributed by Camlock Service

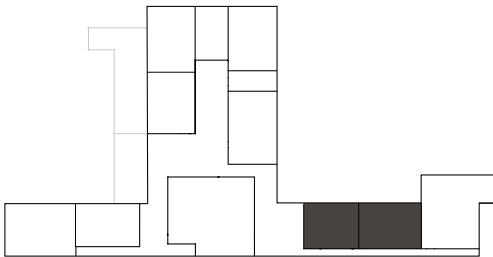
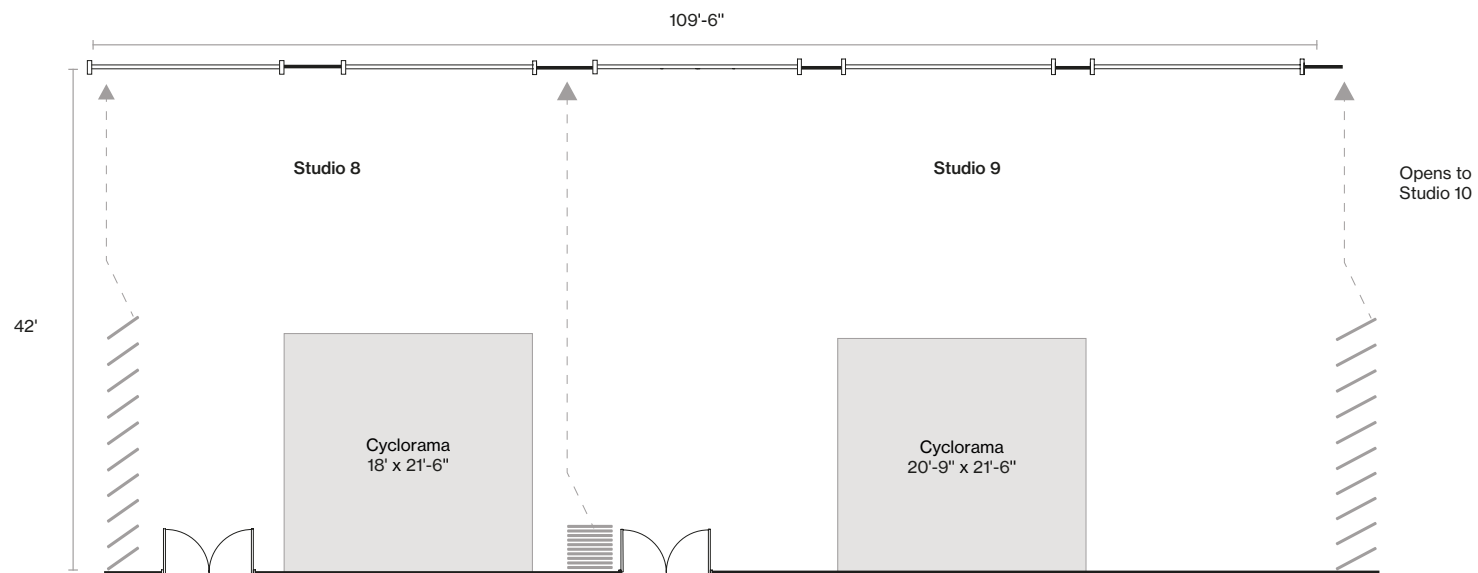
Contact

info@pier59.com
212.691.5959

59 Chelsea Piers 2nd floor
New York, New York 10011

PIER59 STUDIOS

STUDIO 8+9



PIER59 STUDIOS

STUDIO 10



Size / Type

4150sf. / Western Daylight Studio

Specs

Dimensions: 69'W x 69'D x 11'8"H to Beams / 15'-18' Slope of Ceiling

East Cyclorama: One Wall, 21'W x 21'6"D x 12'6"H

West Cyclorama: One Wall with Return, 23'W x 27'7"D x 13'H to Top of Cove

West Facing Windows: Wall of Three, 17'9"W x 10'H / Blackout Capable

South Facing Window: One, 17'9"W x 10'H / Blackout Capable

Retractable Wall to Studio 9: 42'W x 11'H

Power: 400 Amp 3 Phase Distributed by Two 200 Amp Camlock Services

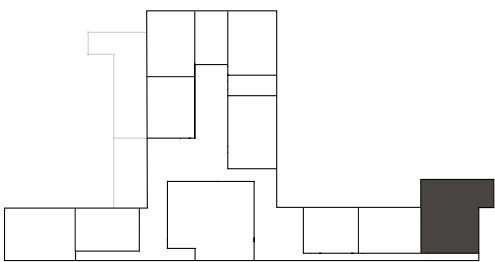
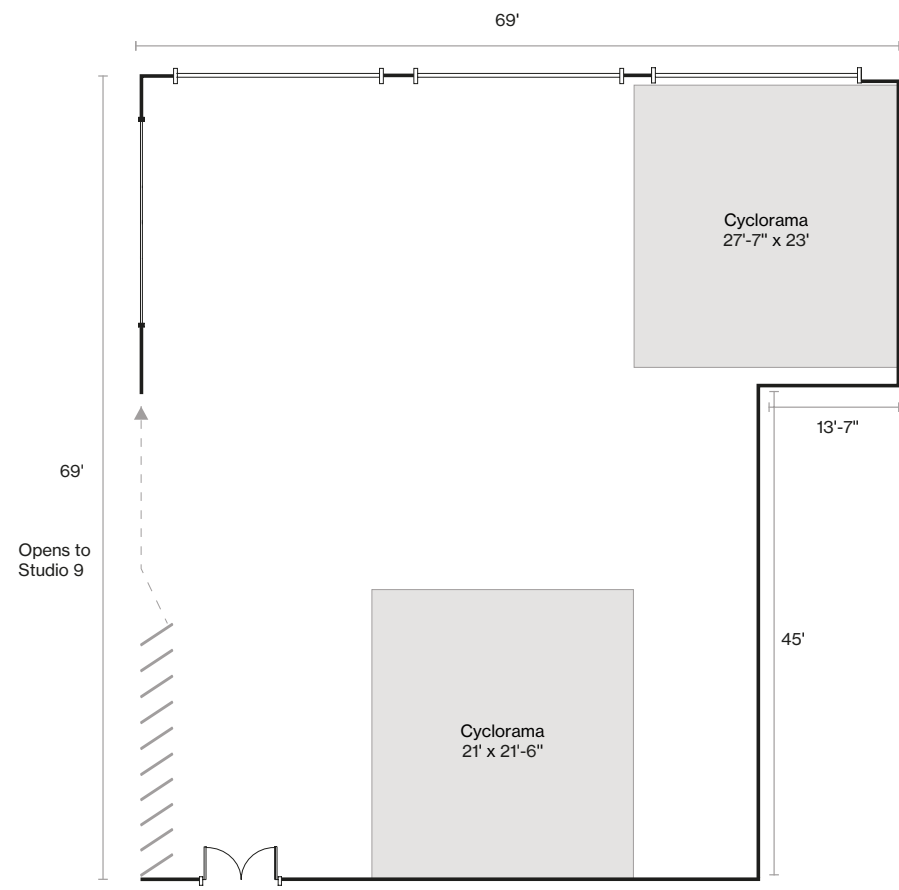
Contact

info@pier59.com
212.691.5959

59 Chelsea Piers 2nd floor
New York, New York 10011

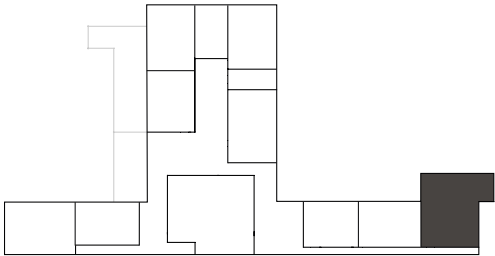
PIER59 STUDIOS

STUDIO 10



PIER59 STUDIOS

STUDIO 10



PIER59 STUDIOS

STUDIO 9+10

Size / Type

4600sf. / Convertable Studios

Studio 9 Specs

Dimensions: 66'9"W x 42'D x 11'8"H to Beams / 15'-18' Slope of Ceiling

Cyclorama: One Wall, 20'9"W x 21'6"D x 16'H

West Facing Windows: Wall of Three, 17'9"W x 10'H / Blackout Capable

Retractable Wall to Studios 8 + 10: 42'W x 11'H

Power: 200 Amp 3 Phase Distributed by Camlock Service

Studio 10 Specs

Dimensions: 69'W x 69'D x 11'8"H to Beams / 15'-18' Slope of Ceiling

East Cyclorama: One Wall, 21'W x 21'6"D x 12'6"H

West Cyclorama: One Wall with Return, 23'W x 27'7"D x 13'H to Top of Cove

West Facing Windows: Wall of Three, 17'9"W x 10'H / Blackout Capable

South Facing Window: One, 17'9"W x 10'H / Blackout Capable

Retractable Wall to Studio 9: 42'W x 11'H

Power: 400 Amp 3 Phase Distributed by Two 200 Amp Camlock Services

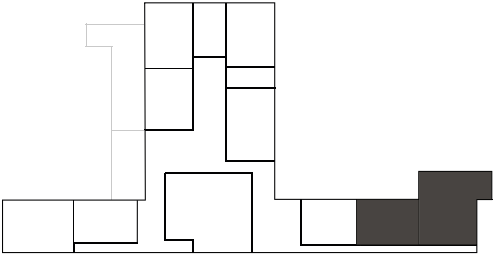
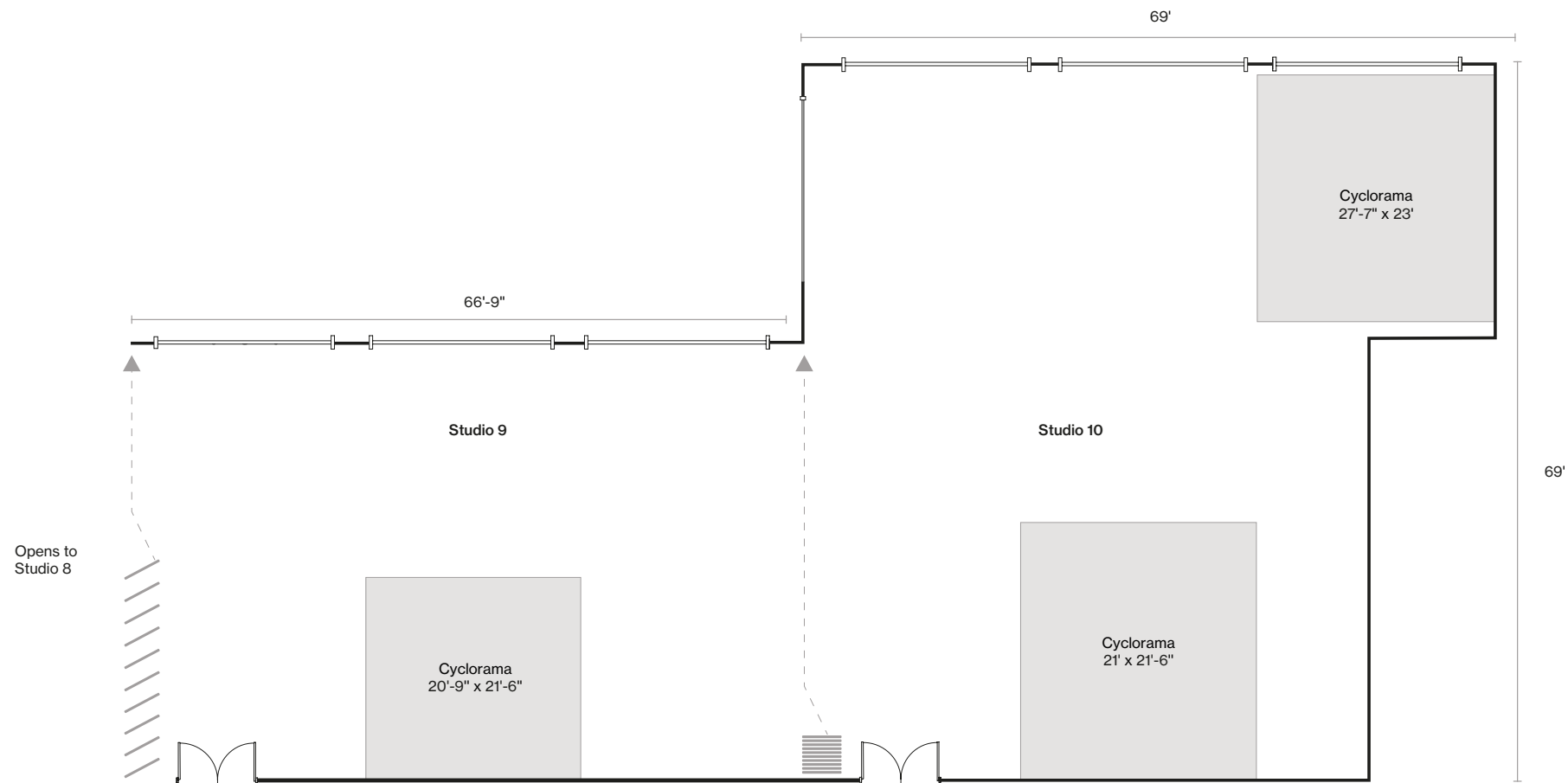
Contact

info@pier59.com
212.691.5959

59 Chelsea Piers 2nd floor
New York, New York 10011

PIER59 STUDIOS

STUDIO 9+10



PIER59 STUDIOS

STUDIO 8+9+10

Size / Type

8750sf. / Convertable Studios

Contact

info@pier59.com
212.691.5959

59 Chelsea Piers 2nd floor
New York, New York 10011

Studio 8 Specs

Dimensions: 42'9"W x 42'D x 11'8"H to Beams / 15'-18' Slope of Ceiling

Cyclorama: One Wall, 18'W x 21'6"D x 16'H

West Facing Windows: Wall of 2, 17'9"W x 10'H / Blackout Capable

Retractable Wall to Studio 9 / Freight Hallway: 42'W x 11'H

Power: 200 Amp 3 Phase Distributed by Camlock Service

Studio 9 Specs

Dimensions: 66'9"W x 42'D x 11'8"H to Beams / 15'-18' Slope of Ceiling

Cyclorama: One Wall, 20'9"W x 21'6"D x 16'H

West Facing Windows: Wall of Three, 17'9"W x 10'H / Blackout Capable

Retractable Wall to Studios 8 + 10: 42'W x 11'H

Power: 200 Amp 3 Phase Distributed by Camlock Service

Studio 10 Specs

Dimensions: 69'W x 69'D x 11'8"H to Beams / 15'-18' Slope of Ceiling

East Cyclorama: One Wall, 21'W x 21'6"D x 12'6"H

West Cyclorama: One Wall with Return, 23'W x 27'7"D x 13'H to Top of Cove

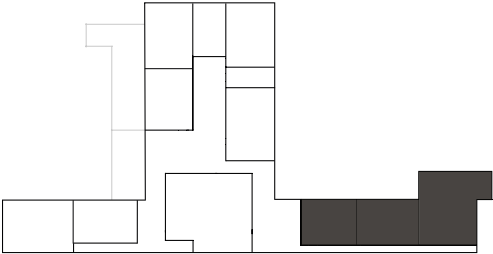
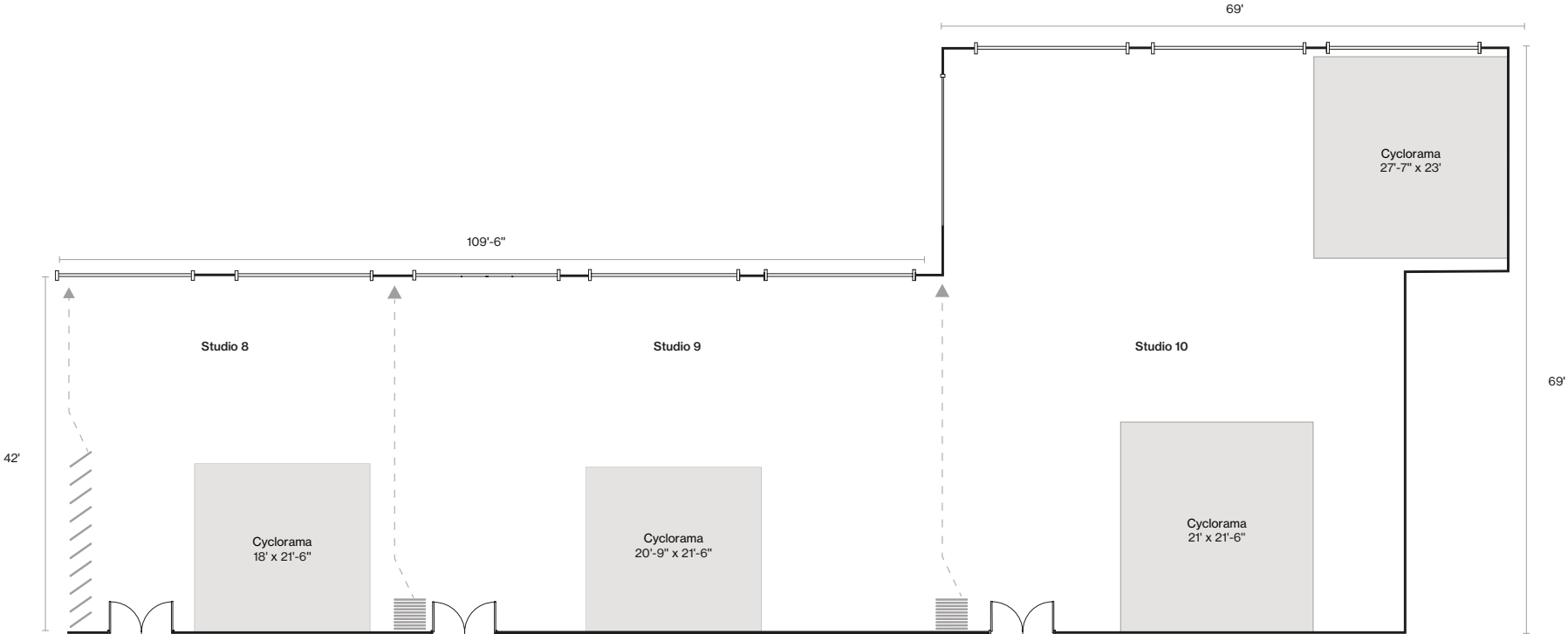
West Facing Windows: Wall of Three, 17'9"W x 10'H / Blackout Capable

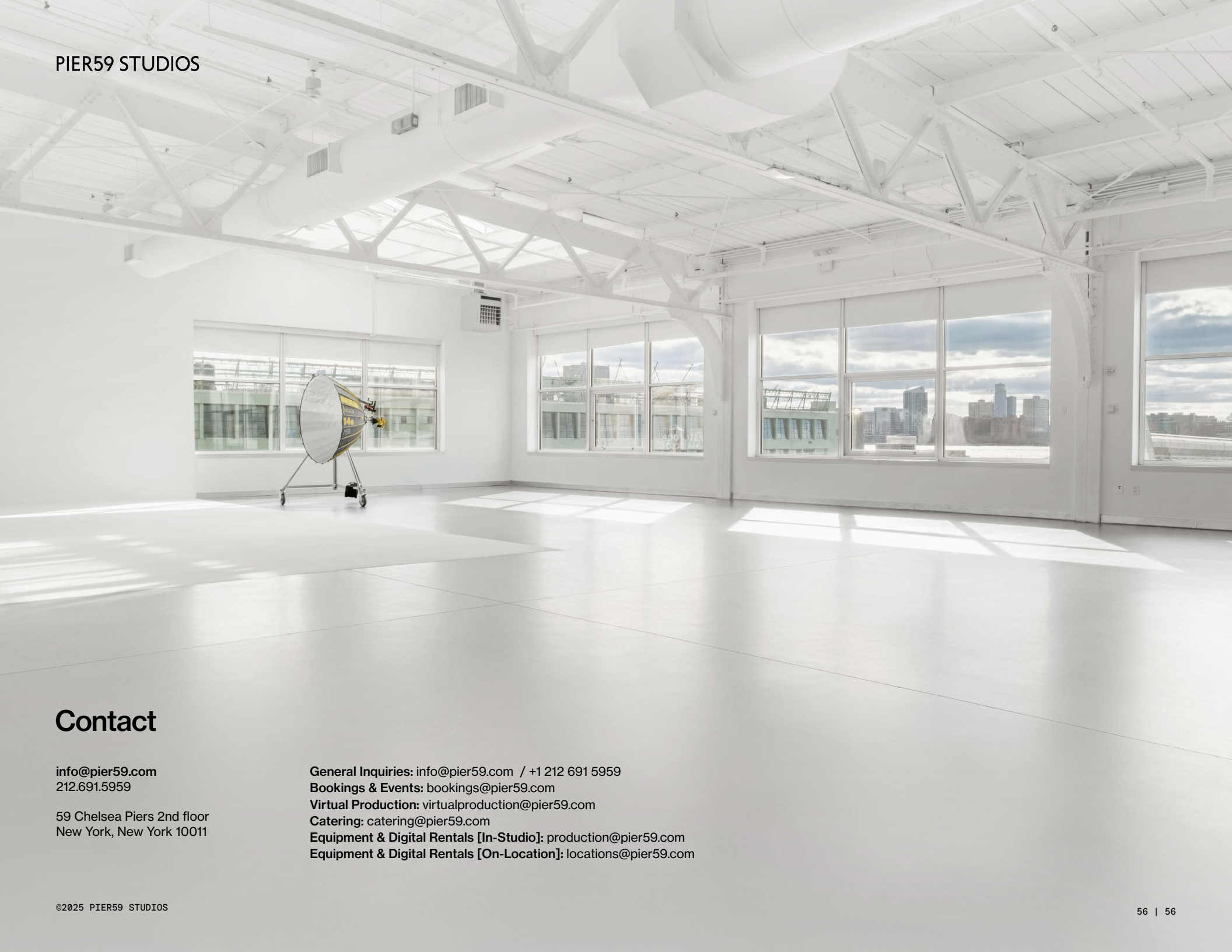
South Facing Window: One, 17'9"W x 10'H / Blackout Capable

Retractable Wall to Studio 9: 42'W x 11'H

Power: 400 Amp 3 Phase Distributed by Two 200 Amp Camlock Services

STUDIO 8+9+10





Contact

info@pier59.com
212.691.5959

59 Chelsea Piers 2nd floor
New York, New York 10011

General Inquiries: info@pier59.com / +1 212 691 5959
Bookings & Events: bookings@pier59.com
Virtual Production: virtualproduction@pier59.com
Catering: catering@pier59.com
Equipment & Digital Rentals [In-Studio]: production@pier59.com
Equipment & Digital Rentals [On-Location]: locations@pier59.com